

Notes:

1. The word "Surveyor" or "Surveyors" as used in this document implies an official signature and seal of the State of Wyoming and does not constitute any warranty or guarantee either expressed or implied.

2. This document is valid only if it has an official Wyoming seal and signature and the Land Surveyor has not been removed from the State Register of Surveyors and that it is made in compliance with the provisions of the Wyoming Statutes.

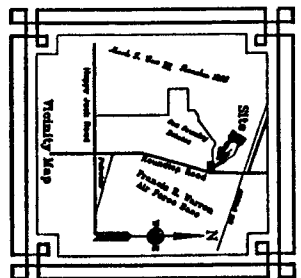
D.R.Q. Notes:

1. Aerial Land Survey was used to determine the location of the boundary between the State of Wyoming and the State of Colorado. The boundary is shown on the map as a line of latitude and longitude. The boundary is shown on the map as a line of latitude and longitude. The boundary is shown on the map as a line of latitude and longitude.

2. Aerial Land Survey was used to determine the location of the boundary between the State of Wyoming and the State of Colorado. The boundary is shown on the map as a line of latitude and longitude. The boundary is shown on the map as a line of latitude and longitude. The boundary is shown on the map as a line of latitude and longitude.

Relocation

1. The location of the boundary between the State of Wyoming and the State of Colorado is shown on the map as a line of latitude and longitude. The boundary is shown on the map as a line of latitude and longitude. The boundary is shown on the map as a line of latitude and longitude.



Acknowledgment

I, the undersigned, do hereby certify that the above described land is the property of the State of Wyoming and that the same is being surveyed for the purpose of the State of Wyoming. I have been duly sworn and certified in the State of Wyoming.

Approvals

Approved by the Chairman - Laramie County Regional Planning Commission on this day of the month of October, 2004.

Development Director: *Barbara*

Approved by the Commissioners of Laramie County, Wyoming on this day of the month of October, 2004.

Chairman: *Barbara*

Laramie County Clerk: *Barbara*

Certificate of Surveyor

State of Wyoming

I, Larry F. Perry, L.S., a registered Professional Land Surveyor in the State of Wyoming, do hereby certify that this map of Survey is a true and correct copy of the original map as shown to me by the owner of the land and that the same is in compliance with the provisions of the Wyoming Statutes. I have been duly sworn and certified in the State of Wyoming.

Larry F. Perry, L.S.  
Wyoming Registration Number  
LS 5047



Five Protection by  
Five District No. Two

Final Description:

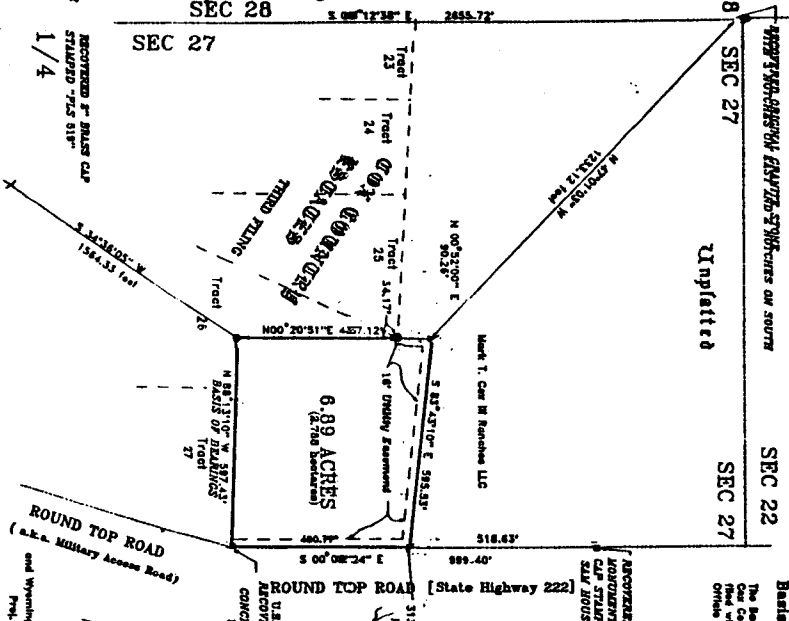
A parcel of land situate, being and being a 6th and 8th of 1/4 of Section 27 of T.14 N., R. 67 W., of the 6th P.M., Laramie County, Wyoming, containing 0.89 acres, more or less, as shown on the attached map. The boundary between the State of Wyoming and the State of Colorado is shown on the map as a line of latitude and longitude. The boundary is shown on the map as a line of latitude and longitude. The boundary is shown on the map as a line of latitude and longitude.

Base of Bearing

The base of bearing was derived from the State of Wyoming and the State of Colorado. The boundary is shown on the map as a line of latitude and longitude. The boundary is shown on the map as a line of latitude and longitude. The boundary is shown on the map as a line of latitude and longitude.

Francis E. Warren  
Air Force Base

LEGEND:  
- - - - - Survey Boundary  
- - - - - Boundary of Section  
- - - - - Boundary of Township  
- - - - - Boundary of Range  
- - - - - Boundary of Meridian  
- - - - - Boundary of Longitude  
- - - - - Boundary of Latitude



No Domestic Water and No Water  
Water Systems are Proposed

Table with 2 columns: Description, Value. Rows include 'Acres', 'Square Feet', 'Meters', 'Feet', 'Meters', 'Feet'.

DEER CROSSING  
Subdivision  
a parcel of land situate  
in the NW 1/4 of Section 27  
T.14 N. R. 67 W. of the 6th P.M.  
Laramie County, Wyoming  
Containing 0.89 Acres  
Date of Preparation: July 13, 2004  
Prepared by: Larry F. Perry, L.S.  
1177 Terry Road, Laramie, Wyoming 82007  
Phone: (307) 234-4000