

5801 OSAGE AVENUE CHEYENNE, WYOMING 82009 PHONE (307) 632-2138
INTERMOUNTAIN
PROFESSIONAL SERVICES, INC.

PROJECT: 3148X
SURVEYOR: JAGIOWITZ
DRAWN BY: WDB/BB
DATE: 01/10/2000

FINAL PLAN
OF
DELL RANGE MARKETPLACE

Sheet 1
of 1

LAND DESCRIPTION

County of Delaware, Wyoming, being a replat of
Subdivision 27, 114 N., R. 66 W., 8th P.M.,
ALL IN THE S. 1/4 SECTION 27, T14 N., R. 66 W., 8th P.M.,
CITY OF CHEYENNE, DELAWARE COUNTY, WYOMING.

VACATION STATEMENT

THE PLAN HEREIN IS MADE FOR THE PURPOSE OF VACATING THE
STREETS AND EASEMENTS SHOWN THEREON.



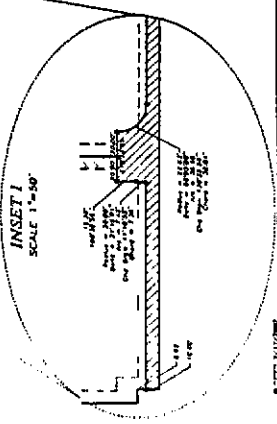
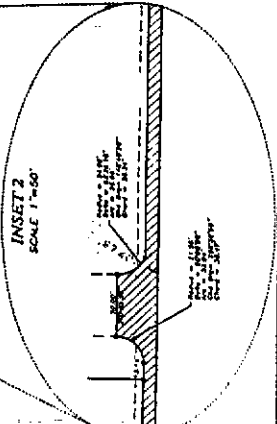
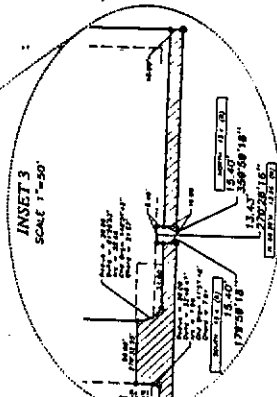
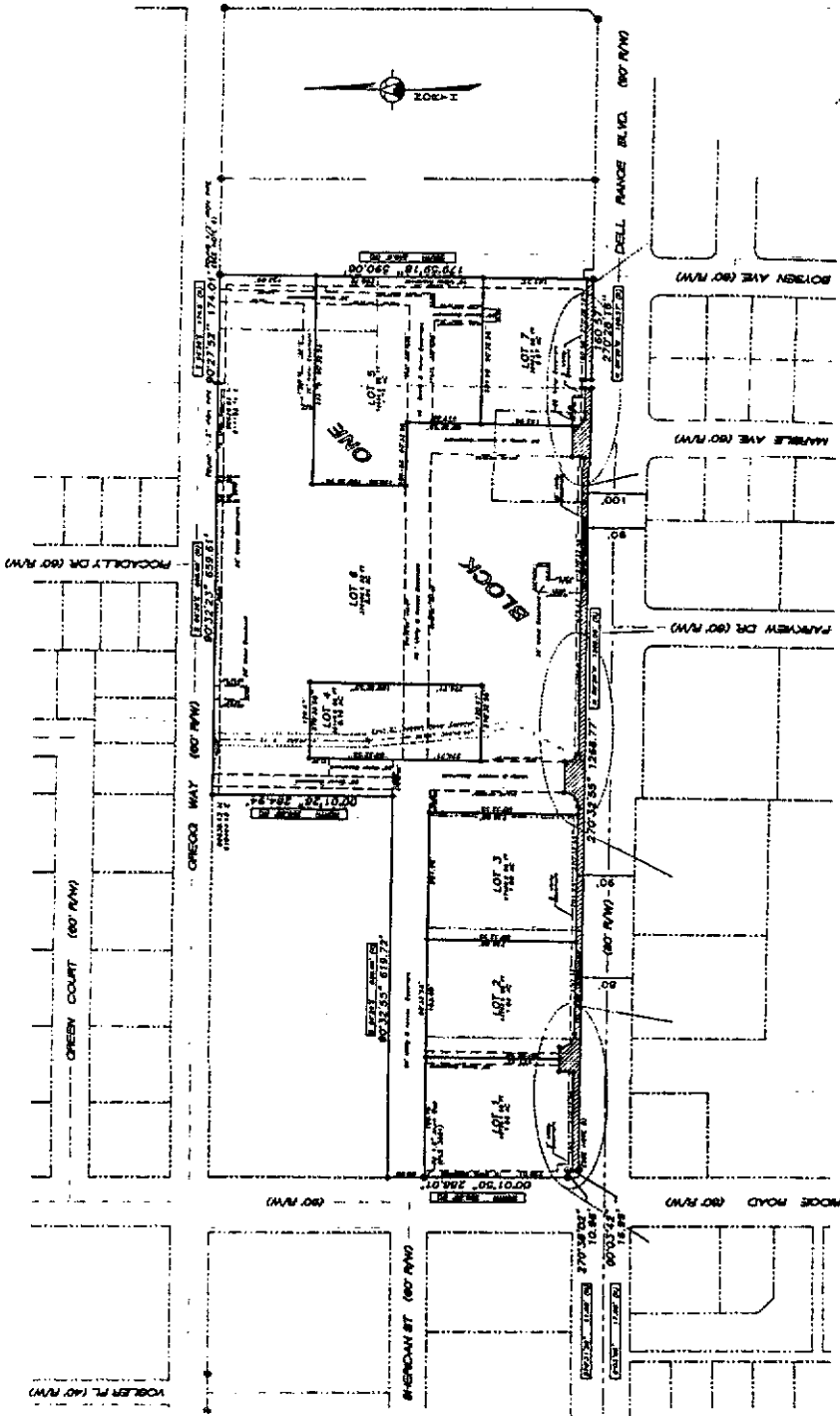
NOTES

- 1) BASE OF CURB - CITY OF CHEYENNE DATA (1994) BY CLOSED METHOD.
- 2) CURB TO GROUND - SEE PLAN FOR DETAILED INFORMATION.
- 3) POINTS LOCATED IN THE FIELD AND MARKED THEREON.
- 4) POINTS LOCATED IN THE FIELD AND MARKED THEREON.
- 5) POINTS LOCATED IN THE FIELD AND MARKED THEREON.
- 6) POINTS LOCATED IN THE FIELD AND MARKED THEREON.
- 7) POINTS LOCATED IN THE FIELD AND MARKED THEREON.
- 8) POINTS LOCATED IN THE FIELD AND MARKED THEREON.
- 9) POINTS LOCATED IN THE FIELD AND MARKED THEREON.
- 10) POINTS LOCATED IN THE FIELD AND MARKED THEREON.

STATEMENT OF SURVEYOR

I, JAGIOWITZ, A PROFESSIONAL LAND SURVEYOR, DO HEREBY
CERTIFY THAT I HAVE PERSONALLY EXAMINED THE FIELD
AND FOUND THE DATA TO BE CORRECT AND SUFFICIENT
FOR THE PURPOSE OF THIS PLAN.

JAGIOWITZ
JAGIOWITZ
01/10/2000



FILING RECORD
JAGIOWITZ
John J. Jagiowitz

DEDICATION

WHEREAS, ALL AS SHOWN BY THESE INSTRUMENTS;
COUNTY OF DELAWARE, WYOMING.

ACKNOWLEDGEMENT

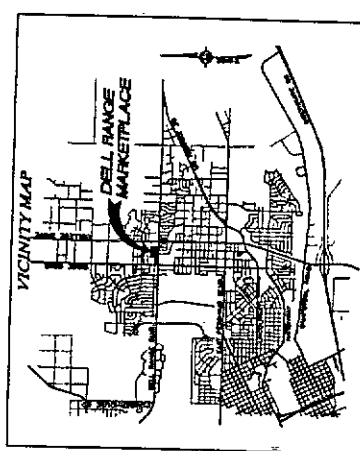
STATE OF DELAWARE
COUNTY OF DELAWARE
I, JAGIOWITZ, A PROFESSIONAL LAND SURVEYOR, DO HEREBY
CERTIFY THAT I HAVE PERSONALLY EXAMINED THE FIELD
AND FOUND THE DATA TO BE CORRECT AND SUFFICIENT
FOR THE PURPOSE OF THIS PLAN.



APPROVALS

APPROVED BY THE CHEYENNE-PLANNING DISTRICT REGIONAL PLANNING COMMISSION
THIS 13th DAY OF JANUARY, 2000.
Shirley C. Williams
PLANNING DIRECTOR

APPROVED BY THE CITY COUNCIL OF CHEYENNE, WYOMING, THIS 21st DAY OF
JANUARY, 2000.
C. S. Spilhaus
CITY CLERK



DELL RANGE MARKETPLACE
BEING A REPLAT OF
ALL OF 'CHEYENNE MEADOWS ADDITION'
AND
ALL OF 'WHEATLAND SUBDIVISION'
ALL IN THE S. 1/4 SECTION 27, T14 N., R. 66 W., 8th P.M.,
CITY OF CHEYENNE, DELAWARE COUNTY, WYOMING.