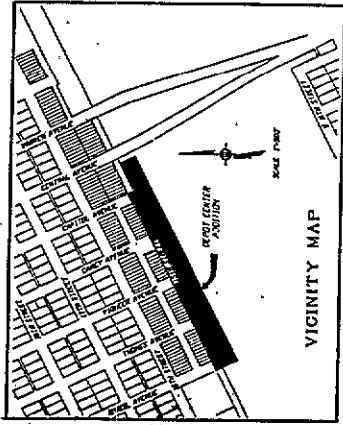


PROJECT 2537  
 DATE 11/24/93  
 SURVEYOR J.B. JONES  
 DRAWN BY D.E.D./CADD

INTERMOUNTAIN PROFESSIONAL SERVICES INC.  
 8001 OSAGE AVENUE  
 CHEYENNE, WYOMING 82009  
 PH: (307) 632-2130  
 FAX: (307) 632-2184

PROJECT: DEPOT CENTER ADDITION  
 FINAL PLAN

Sheet 1



**DEDICATION**

BEY ALL MEN BY THESE PRESENTS:  
 THAT THE CITY OF CHEYENNE, COUNTY OF LARAMIE, WYOMING, TRANSPORTATION MUSEUM AND DEPOT CENTER ADDITION, OWNERS IN FEE SIMPLY OF THE LANDS SHOWN ON THIS PLAN AND DEED, DOES HEREBY CHASE, THIS PLAN OF DEPOT CENTER ADDITION, AS SHOWN AND DESCRIBED THE RIGHT-UP-WAY OF 15TH STREET AS SHOWN HEREON TO THE PUBLIC FOREVER.

Robert S. Rotzberg, Chairman  
 John B. Rodgers, Secretary

**ACKNOWLEDGEMENT**

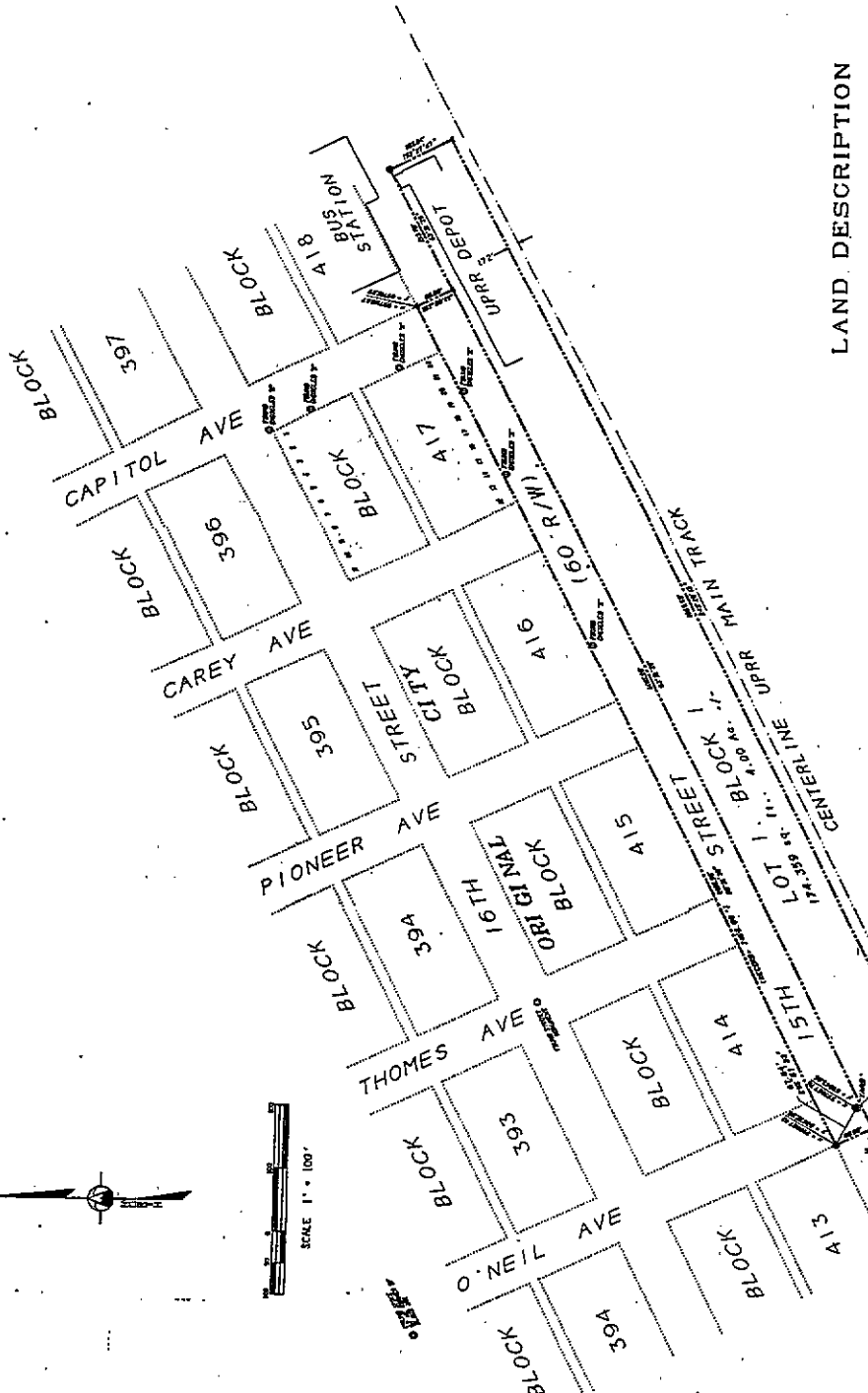
STATE OF WYOMING  
 COUNTY OF LARAMIE  
 I, John B. Rodgers, Notary Public, hereby acknowledge that Robert S. Rotzberg, Chairman, and John B. Rodgers, Secretary of the City of Cheyenne - County of Laramie, Wyoming Transportation Museum Joint Powers Board, did affix their signatures to this plan of "DEPOT CENTER ADDITION," this 11th day of November, 1993.  
 Notary Public: John B. Rodgers  
 My Commission Expires: Dec. 4, 1995

**APPROVALS**

APPROVED BY THE CHEYENNE/LARAMIE COUNTY REGIONAL PLANNING COMMISSION THIS 11th DAY OF November, 1993.  
 Development Director

APPROVED BY THE CITY COUNCIL OF THE CITY OF CHEYENNE THROUGH THIS 11th DAY OF November, 1993.  
 City Clerk

FINAL PLAN OF  
 DEPOT CENTER ADDITION  
 A PORTION OF THE ORIGINAL CITY OF CHEYENNE,  
 LYING SOUTH OF BLOCKS 414 THROUGH 418,  
 LARAMIE COUNTY, WYOMING.



**LAND DESCRIPTION**  
 A PORTION OF THE ORIGINAL CITY OF CHEYENNE LYING SOUTH OF BLOCKS 414 THROUGH 418, AND BEING MORE PARTICULARLY DESCRIBED AS FOLLOWS:  
 BEGINNING AT THE SOUTHWEST CORNER OF BLOCK 413 ORIGINAL CITY OF CHEYENNE, SAID POINT BEING 595.5633' WITH ALL CITY OF CHEYENNE CONTROL MONUMENT MARKED "TARDY" FROM THE CITY OF CHEYENNE CONTROL MONUMENT MARKED "TARDY" THENCE 65°30'37" ALONG THE SOUTH LINE OF SAID BLOCKS 414 OF BLOCK 418, A DISTANCE OF 165.90 FEET TO THE SOUTHWEST CORNER THENCE 187°20'11" ON THE WEST LINE OF BLOCK 418 EXTENDED, A DISTANCE OF 40.00 FEET TO A POINT,  
 THENCE 63°21'20" PARALLEL TO AND 60 FEET FROM THE SOUTH LINE OF BLOCK 418, A DISTANCE OF 24.70 FEET TO A POINT,  
 THENCE 185°21'41" A DISTANCE OF 103.84 FEET TO A POINT LYING 132 FEET FROM THE CENTERLINE OF THE MAIN UNION PACIFIC TRACKS,  
 THENCE 84°32'13" PARALLEL TO AND 172 FEET FROM THE CENTERLINE OF SAID TRACKS TO A POINT ON THE WEST RIGHT-OF-WAY OF BIRCH AVENUE EXTENDED,  
 THENCE 332°29'41" ALONG SAID WEST RIGHT-OF-WAY EXTENDED, A DISTANCE OF 165.03 FEET TO THE POINT OF BEGINNING,  
 SAID PARCEL CONTAINING 261,724 SQUARE FEET OR 6.0 ACRES, MORE OR LESS.

**SURVEYOR'S STATEMENT**

I, BECKY J. BRUNHAM, A PROFESSIONAL LAND SURVEYOR IN THE STATE OF WYOMING, DO HEREBY STATE THAT THIS PLAN OF THE CITY OF CHEYENNE, AS DESCRIBED HEREON WAS A TRUE AND CORRECT REPRESENTATION OF THE SURVEY MADE UNDER MY DIRECT SUPERVISION AND CONTROL, AND THAT THE SURVEY WAS ACCURATELY REPRESENTS THE SUBDIVISION AND MONUMENTATION OF SAID LAND AS SHOWN.  
 BECKY J. BRUNHAM - PLS 3881

**NOTES**

- 1) BASIS OF SURVEY - CITY OF CHEYENNE CONTROL SURVEY, WARD TO INTERSTATE 25, 185 22' 00"
- 2) THE FOUND CORNER TO 80.00' IS OFF SET LINES FROM THE SOUTH EAST AND NORTH LINES OF BLOCKS 418 AND 417. THEY ARE FROM THE SURVEY BY ROBERT C. CORBET, PLS 495, JUNE 1978.
- 3) FOUND MONUMENT AS NOTED HEREON.
- 4) SET 1-1/2" ALUMINUM CAP ON 5/8" X 24" REBAR - STAMPED PLS 3881
- 5) SET CHISELED "X" IN CONCRETE
- 6) CITY OF CHEYENNE CONTROL MONUMENT

PLANNING RECORD  
 RECORDATION NO. 131843  
 The City of Cheyenne  
 City Clerk  
 J. B. Jones  
 City Clerk  
 11/24/93