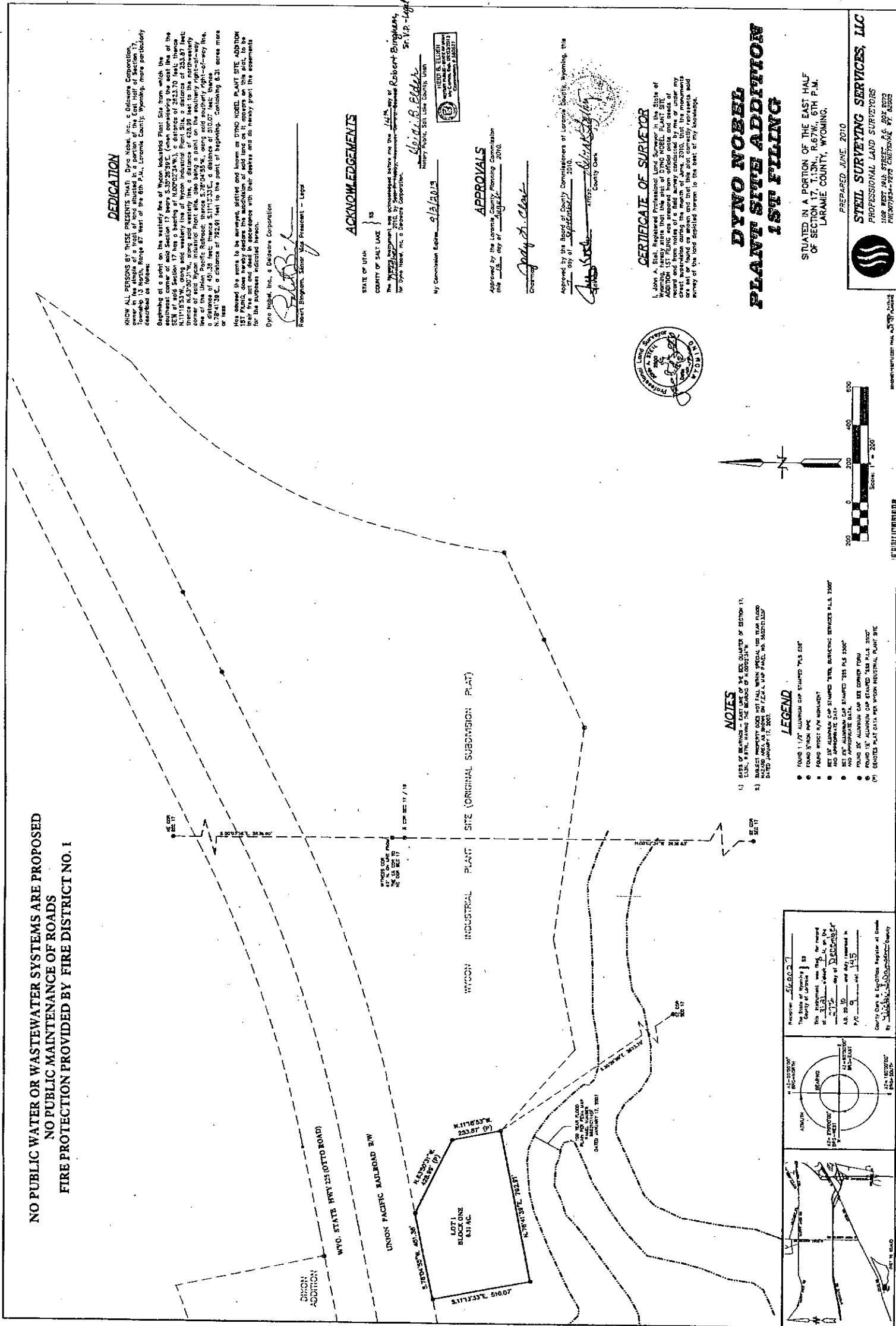


NO PUBLIC WATER OR WASTEWATER SYSTEMS ARE PROPOSED  
NO PUBLIC MAINTENANCE OF ROADS  
FIRE PROTECTION PROVIDED BY FIRE DISTRICT NO. 1



**DEDICATION**

KNOW ALL PERSONS BY THESE PRESENTS THAT: DYNQ NOBEL, INC., a Delaware Corporation, owner in fee simple of a tract of land situated in a portion of the East half of Section 17, Township 13N, Range 67W, of the 6th P.M., Laramie County, Wyoming, more particularly described as follows:

Beginning at a point on the western line of the aforesaid Plat; thence, with the southeast corner of said Section 17, bearing S. 5° 57' 30\"/>

We, signed the plat to be recorded, signed and sworn to as DYNQ NOBEL PLANT SITE ADDITION 1ST FILING, and we have caused the recording of said plat to be made on this date, and our true and correct intentions are hereby declared and do hereby affirm the statements for the purposes indicated herein.

DYNQ NOBEL, INC., a Delaware Corporation

Robert Bingham, Senior Vice President - Lays

**ACKNOWLEDGEMENTS**

STATE OF WYOMING  
COUNTY OF SALT LAKE } ss

I, the undersigned, County Clerk of the County of Salt Lake, do hereby certify that the foregoing plat was duly recorded in the office of the County Clerk of said County on the 14th day of August, 2010, by Robert Bingham, Sr. Vice President of DYNQ NOBEL, INC., a Delaware Corporation.

My Commission Expires 9/2/2013  
Marilyn R. Eldred, County Clerk



**APPROVALS**

Approved by the Laramie County Planning Commission  
this 13th day of August, 2010.

Christy A. Clark

Approved by the Board of County Commissioners of Laramie County, Wyoming, this 13th day of August, 2010.

John R. ...  
County Clerk



**CERTIFICATE OF SURVEYOR**

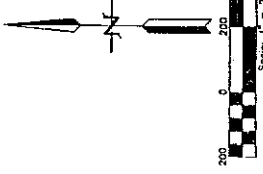
I, John A. ...  
Professional Surveyor, do hereby certify that the plat of DYNQ NOBEL PLANT SITE ADDITION 1ST FILING was prepared from official notes and data of a survey conducted by me or under my direct supervision and that the plat correctly represents said survey of the land depicted hereon to the best of my knowledge.

**NOTES**

- 1) DATE OF RECORDING IS THE DATE OF SECTION 17, T.13N., R.67W., S.67E., HAVING THE BEARING OF A. 80° 03' 14\"/>

**LEGEND**

- FOUND 1 1/2\"/>



Received \$1600.00  
The State of Wyoming } ss  
County of Laramie }  
this 14th day of August, 2010.  
A.B. ...  
P.C. ...

County Clerk & Register at Laramie  
Wyoming

**DYNQ NOBEL  
PLANT SITE ADDITION  
1ST FILING**

PREPARED JUNE, 2010

SITEL SURVEYING SERVICES, LLC  
1105 WEST 60th STREET  
MILWAUKEE, WISCONSIN 53219