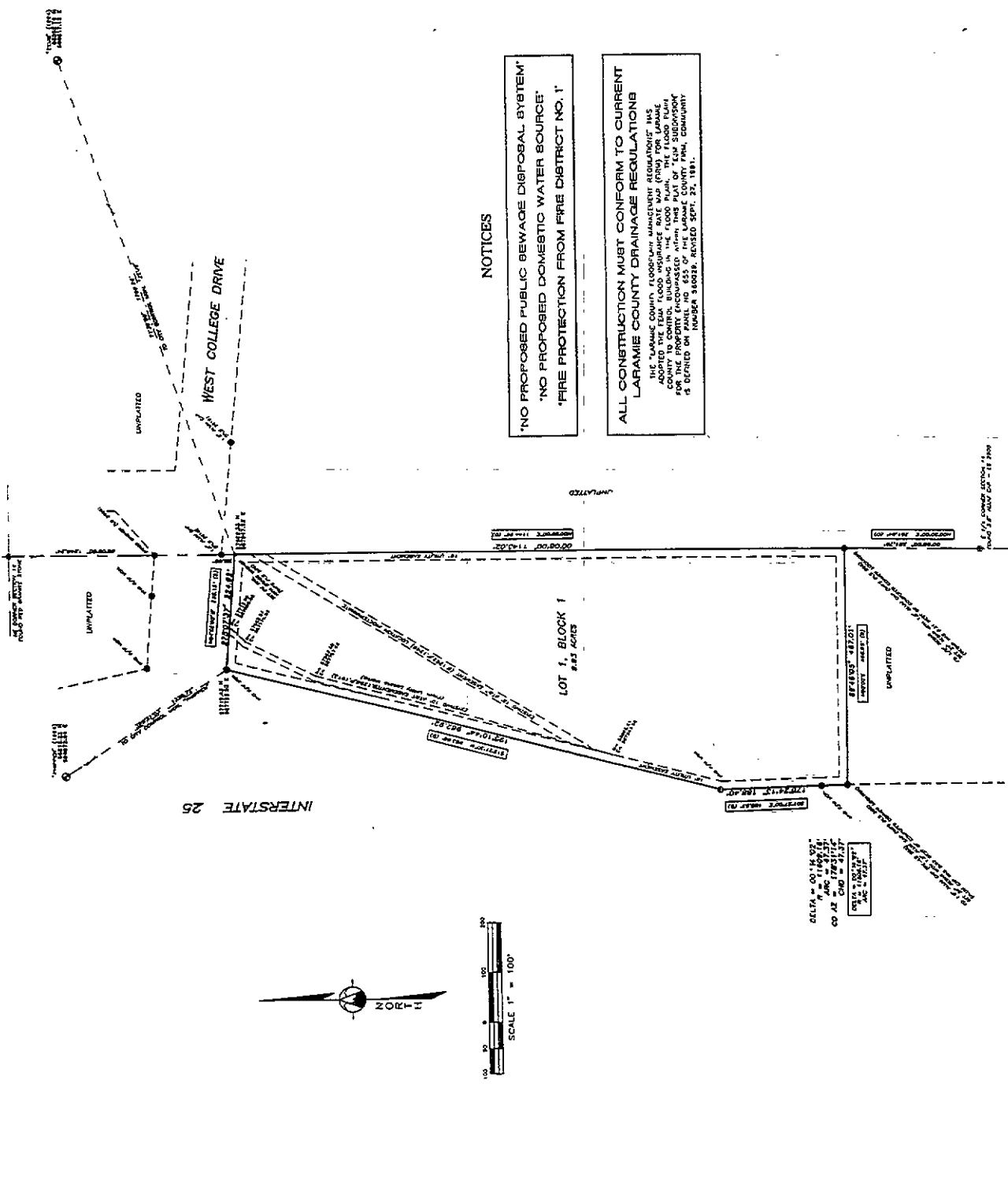


PROJECT: 3014  
 DATE: 06/09/97  
 SURVEYOR: JAG/DGV  
 DRAWN BY: WDB/ACAD

5601 OSAGE AVENUE CHEYENNE, WYOMING 82009 PHONE: (307) 632-3138  
**INTERMOUNTAIN PROFESSIONAL SERVICES, INC.**

PROJECT: EJM SUBDIVISION  
 FINAL PLAN OF

Sheet 1



**NOTICES**

'NO PROPOSED PUBLIC BEWAGE DISPOSAL SYSTEM'  
 'NO PROPOSED DOMESTIC WATER SOURCE.'  
 'FIRE PROTECTION FROM FIRE DISTRICT NO. 1'

**ALL CONSTRUCTION MUST CONFORM TO CURRENT LARAMIE COUNTY DRAINAGE REGULATIONS**

THE LARAMIE COUNTY FLOODPLAIN MANAGEMENT REGULATIONS HAS ADOPTED THE FEMA FLOOD INSURANCE RATE MAP (FIRM) FOR LARAMIE COUNTY TO CONTROL BUILDING IN THE FLOODPLAIN. WITH THIS PLAT OF EJM SUBDIVISION THE DEVELOPER HAS AGREED TO CONFORM TO THE REGULATIONS AS DESCRIBED ON PANEL NO. 455 OF THE LARAMIE COUNTY FIRM. COMMUNITY NUMBER 50089. REVISED SEPT. 22, 1991.

**STATEMENT OF SURVEYOR**

I, JAMES W. DELTA, SURVEYOR IN THE STATE OF WYOMING, DO HEREBY CERTIFY THAT THE SURVEY AND THE PLAT THEREOF WERE MADE BY ME OR UNDER MY CLOSE PERSONAL SUPERVISION AND THAT I AM A LICENSED SURVEYOR IN THE STATE OF WYOMING. I HAVE REVIEWED THE PLAT AND THE SURVEY RECORDS AND I AM Satisfied THAT THE SURVEY WAS MADE IN ACCORDANCE WITH THE REQUIREMENTS OF THE WYOMING SURVEYING ACT AND THAT THE PLAT IS A TRUE AND CORRECT REPRESENTATION OF THE SURVEY. THIS STATEMENT WAS MADE IN CONFORMANCE WITH CURRENT PROFESSIONAL STANDARDS AND IS CORRECT TO THE BEST OF MY KNOWLEDGE AND BELIEF.

JAMES W. DELTA  
 SURVEYOR  
 WYOMING SURVEYING BOARD #15 242

**LAND DESCRIPTION**

A PORTION OF THE E 1/2 OF THE NE 1/4, SECTION 14, T.13 N., R.67 W., 6TH P.M., AS RECORDED IN QUA CLERK 6416, PLOD BY BOOK 1331, PAGE 182; BEING MORE PARTICULARLY AS DESCRIBED AS FOLLOWS:

BEGINNING AT A POINT ON THE EAST LINE OF SECTION 14, THE EAST CORNER OF WHICH IS CORNER 1, A DISTANCE OF 133.14 FEET FROM THE EAST LINE OF SAID SECTION 14 TO A POINT ON THE SOUTH LINE OF SAID SECTION 14, THE EAST CORNER OF SAID SECTION 14 TO A POINT ON THE SOUTH LINE OF WEST COLLEGE DRIVE, THENCE S89°57'54" W. ALONG SAID INTERSTATE 25, THENCE S89°57'54" W. ALONG SAID INTERSTATE 25, A DISTANCE OF 81.92 FEET TO A POINT ON THE EAST LINE OF SAID SECTION 14, THENCE S89°57'54" W. ALONG SAID INTERSTATE 25, A DISTANCE OF 133.14 FEET TO A POINT ON THE SOUTH LINE OF SAID SECTION 14, THENCE S89°57'54" W. ALONG SAID INTERSTATE 25, A DISTANCE OF 81.92 FEET TO A POINT ON THE EAST LINE OF SAID SECTION 14, THENCE S89°57'54" W. ALONG SAID INTERSTATE 25, A DISTANCE OF 133.14 FEET TO THE POINT OF BEGINNING, SAID PARCEL CONTAINING 8.23 ACRES OR LESS.

**DEDICATION**

KNOW ALL MEN BY THESE PRESENTS, THAT THE PART OF THE LAND DESCRIBED IN THE PLAT OF EJM SUBDIVISION, AS DESCRIBED HEREON, DOES HEREBY DECLARE THE SUBDIVISION OF SAID LAND TO BE THE PUBLIC HIGHWAY OR ROAD, HEREON SET FORTH IN THE FOREGOING, AND SAID HIGHWAY OR ROAD SHALL BE OPEN TO ALL PUBLICLY OWNED VEHICLES.

BY: *James W. Delta*  
 JAMES W. DELTA, SURVEYOR

**ACKNOWLEDGEMENT**

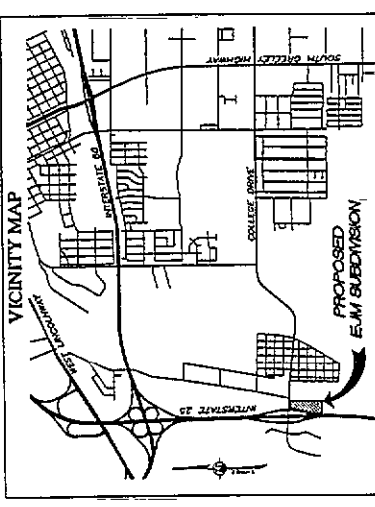
STATE OF WYOMING )  
 COUNTY OF LARAMIE )  
 I, WITNESSES, THIS 9th DAY OF August, 1997,  
 THE ABOVE DEDICATION INSTRUMENT WAS ACKNOWLEDGED BEFORE ME BY EDWARD J. WINKLER, THIS 9th DAY OF August, 1997.  
 WITNESSES MY HAND AND SEAL: *Edward J. Winkler*  
 EDWARD J. WINKLER, Notary Public  
 My Comm. Expires: May 14, 1999

**APPROVALS**

APPROVED BY THE CHEYENNE-LARAMIE COUNTY REGIONAL PLANNING COMMISSION  
 THIS 27th DAY OF JULY, 1997  
*James W. Delta*  
 JAMES W. DELTA, DEVELOPMENT DIRECTOR

APPROVED BY THE COUNTY COMMISSIONERS OF LARAMIE COUNTY, WYOMING  
 THIS 5th DAY OF AUGUST, 1997  
*James W. Delta*  
 JAMES W. DELTA, ATTESY COUNTY CLERK

APPROVED BY THE CITY COUNCIL OF THE CITY OF CHEYENNE, WYOMING  
 THIS 26th DAY OF JULY, 1997  
*James W. Delta*  
 JAMES W. DELTA, ATTESY CITY CLERK



**EJM SUBDIVISION**

A SUBDIVISION OF A PORTION OF THE E 1/2 OF THE NE 1/4 OF SECTION 14, T.13 N., R.67 W., 6TH P.M., LARAMIE COUNTY, WYOMING

**PLATTING RECORD**

Registration: 209149  
 County: Laramie  
 This instrument was filed for record in the Public Records of Laramie County, Wyoming, on 06/09/97, and duly recorded in Book 15, Page 242, and duly recorded in Book 15, Page 242, and duly recorded in Book 15, Page 242.

*James W. Delta*  
 JAMES W. DELTA, SURVEYOR

- NOTES**
- 1) BASE OF TRVERSE - CITY OF CHEYENNE DATA (1884) BY CLOSED TRVERSE FROM "TRIPART" TO "TRIP"
  - 2) ADJUSTMENTS AS SHOWN ARE ANGLES RIGHT FROM NORTH.
  - 3) FOUND MONUMENT AS NOTED HEREON.
  - 4) SET MONUMENT AS NOTED HEREON.
  - 5) "SETTLE" STRIP (S) RECORD DASHBOARD FROM DEED.