

DESCRIPTION

KNOW ALL PERSONS BY THESE PRESENTS THAT STEVEN L. FINE and DAVID R. FINKE, the undersigned, do hereby certify that the following is a correct and true copy of the original plat as shown to me by the undersigned, and that the same was duly recorded in the office of the County Clerk of Lincoln County, Wyoming, on the 27th day of September, 1984, and that the same is a true and correct copy of the original plat as shown to me by the undersigned, and that the same was duly recorded in the office of the County Clerk of Lincoln County, Wyoming, on the 27th day of September, 1984.

Block 1 of the southwest corner of Lot 1, Block One of Cedarwood Manor, Subdivision, located in the east 1/4 of Section 21, Township 18N, Range 101E, is hereby vacated and the same is being re-platted as follows: Block 1, containing Lots 8 through 13, situated on the west side of Randy Road, 70' R/W. Block 2, containing Lots 11, 12 and 13, situated on the east side of Randy Road, 70' R/W. Block 3, containing Lots 20, 21 and 22, situated on the west side of Silvergate Drive, 70' R/W.

The above described lots have been surveyed, replatted and shown to me by the undersigned, and the same are being re-platted in accordance with the survey and replatting shown to me by the undersigned, and that the same are being vacated and re-platted in accordance with the survey and replatting shown to me by the undersigned, and that the same are being vacated and re-platted in accordance with the survey and replatting shown to me by the undersigned.

Steven L. Fine
Steven L. Fine
David R. Finke
David R. Finke

ACKNOWLEDGEMENT

STATE OF WYOMING }
COUNTY OF LINCOLN } SS
I, the undersigned, do hereby certify that the above is a true and correct copy of the original plat as shown to me by the undersigned, and that the same was duly recorded in the office of the County Clerk of Lincoln County, Wyoming, on the 27th day of September, 1984.

David R. Finke
David R. Finke
Notary Public, Lincoln County, Wyoming

APPROVALS

Approved by the City Council of Lincoln County, Wyoming, on the 27th day of September, 1984.

Approved by the City Council of Lincoln County, Wyoming, on the 27th day of September, 1984.

CERTIFICATE OF SURVEYOR

I, John A. Steel, Registered Professional Land Surveyor in the State of Wyoming, hereby certify that this plat of ESTEVAN'S SUBDIVISION, located in the east 1/4 of Section 21, Township 18N, Range 101E, was surveyed and replatted in accordance with the survey and replatting shown to me by the undersigned, and that the same are being vacated and re-platted in accordance with the survey and replatting shown to me by the undersigned, and that the same are being vacated and re-platted in accordance with the survey and replatting shown to me by the undersigned.



ESTEVAN'S SUBDIVISION

A REPEAT OF LOTS 1, 2, 3 AND VACATED 16 FOOT ALLEY WITHIN BLOCK ONE, BEAVER ADDITION, AND A PORTION OF VACATED GROVE DRIVE.

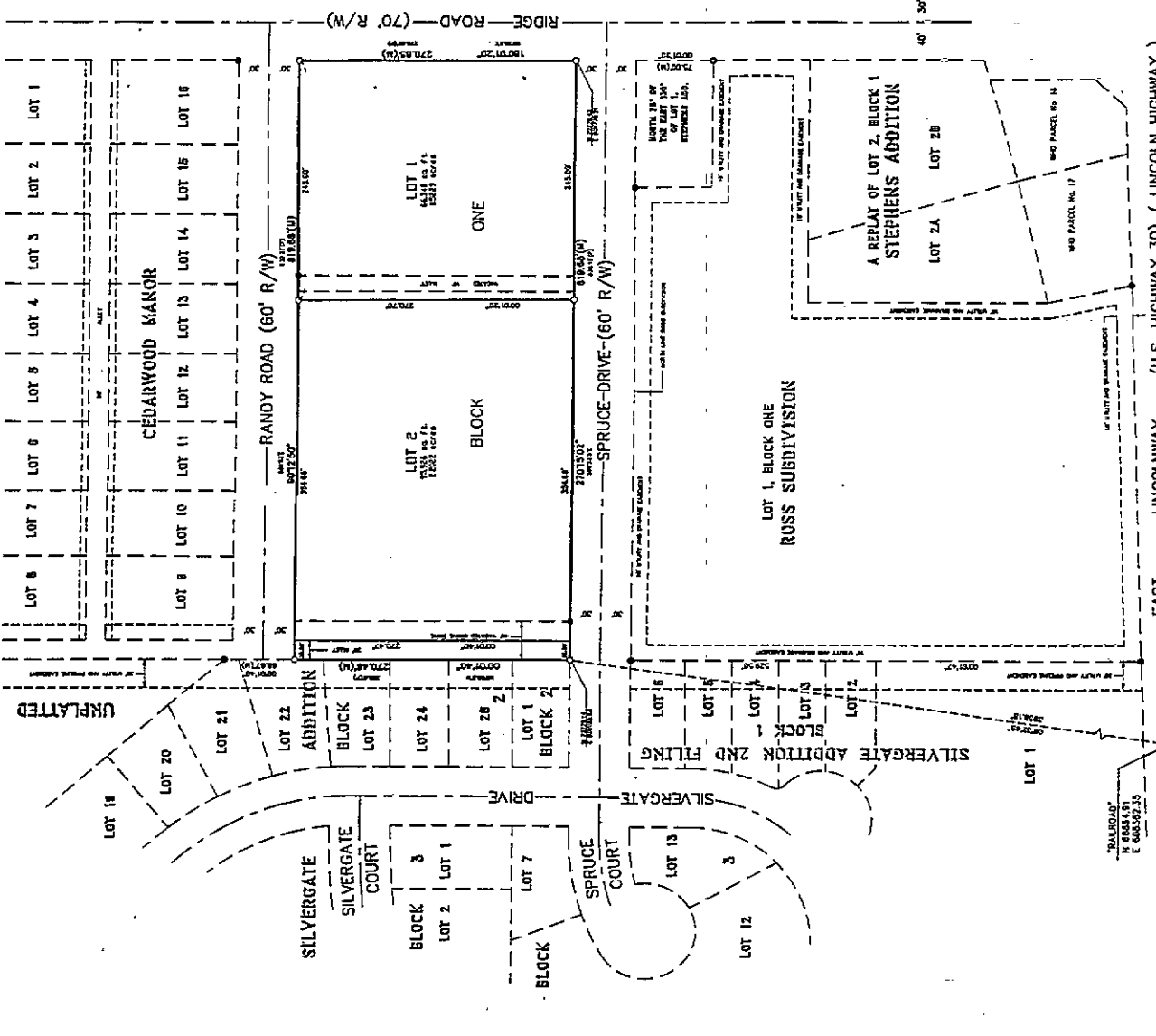
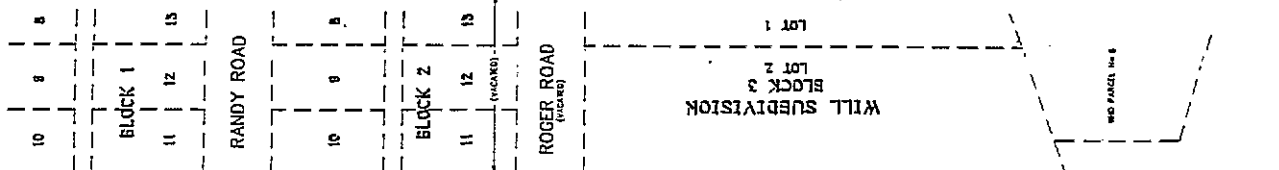
REGISTERED LAND SURVEYORS
19 S. B. ST. S.W.
CARTERSVILLE, GEORGIA, 30203

VACATION STATEMENT

- 1) All Interior Lot and Block lines of Beaver Addition.
- 2) 40 foot right-of-way of Grove Drive dedicated in Beaver Addition.
- 3) 16 foot alley right-of-way dedicated in Beaver Addition.

LEGEND

- 0 3/4" x 9/16" dia. x 24" long stake with 1 1/2" aluminum cap stamped "SSS LS 2500"
- Found 1 1/2" aluminum cap stamped "SSS LS 2500"
- Found 1 1/2" aluminum cap stamped "LS 519"
- Found 1 1/2" aluminum cap stamped "PE LS 887"
- Found chiseled "X" in concrete.
- Found 1/2" iron pipe.
- Found 120d spike.
- ▲ City of Cheyenne Control Monument.
- (h) Demote scale measured this survey.
- (P) Demote plat date from plat of Beaver Addition.



LOCALITY MAP showing the site location relative to Sun Valley, Atlatris, and Silvergate. AZIMUTH and FILING RECORD information are also provided.

