

### CERTIFICATE OF SURVEYOR

State of Wyoming } ss.  
 County of Laramie

I, R.L. Hudson, a Land Surveyor registered in the State of Wyoming, do hereby certify that this Map of Flohr Addition, as shown hereon, has been prepared from the field notes and survey made by me on the 7th day of April, 1978, and that it correctly and accurately represents said survey of the lands as shown hereon and that said addition embraces all of the following described land situated in the NW 1/4 of the SE 1/4 of Section 19, Township 14 North, Range 66 West, Sixth Principal Meridian, Laramie County, Wyoming, to wit:

Beginning at the southeast corner of Mylar Addition in the City of Cheyenne, as shown hereon and in the first of the Laramie County Clerk and filed at the office of the Laramie County Clerk and Office Register of Deeds on the 5th day of April, 1981, in Folder 199; thence 90°06'51" in azimuth, along the north right-of-way line of Prairie Avenue, a distance of 145.00 feet; thence 0°06'51" at right angles, a distance of 111.00 feet; thence 270°06'51", at right angles, a distance of 80.00 feet; thence 180°06'51", at right angles, a distance of 25.00 feet; thence 270°06'51", at right angles, a distance of 64.88 feet to a point on the east line of the Mylar Addition; thence 180°11'21", along the east line of said addition, a distance of 88.00 feet to the point of beginning, containing 0.335 acres, more or less.

R.L. HUDSON  
 WYOMING  
 LAND  
 SURVEYOR

Wyoming L.S. No. 319

### DECLARATION

KNOW ALL MEN BY THESE PRESENTS, that Cyrena B. Flohr, a widow, owner in fee simple of the land embraced in this plat as described hereon, does hereby declare the survey of said land, as appears on this plat, to be her free and voluntary act and deed.

Cyrena B. Flohr  
 Cyrena B. Flohr

### ACKNOWLEDGEMENT

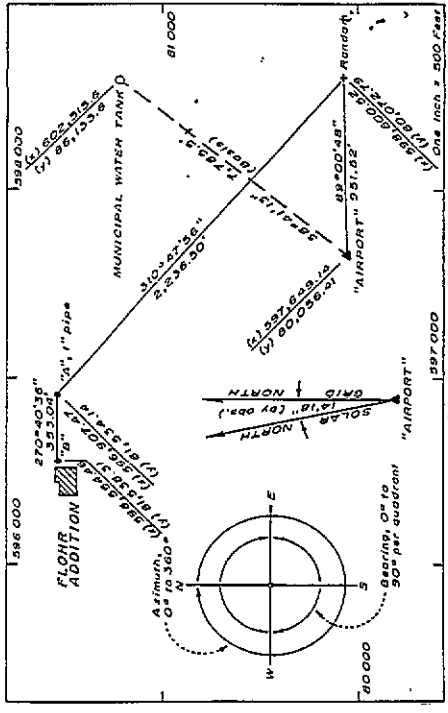
State of Wyoming } ss.  
 County of Laramie

The foregoing Declaration was signed and acknowledged before me, by Cyrena B. Flohr, on this \_\_\_ day of \_\_\_\_\_, 1978.

IN WITNESS WHEREOF, I have hereunto set my hand and affixed the seal of my office this \_\_\_ day, month and year first above written.

My commission expires April 24, 1980.

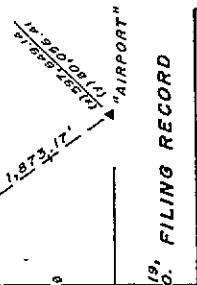
(Notary Public)



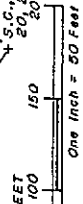
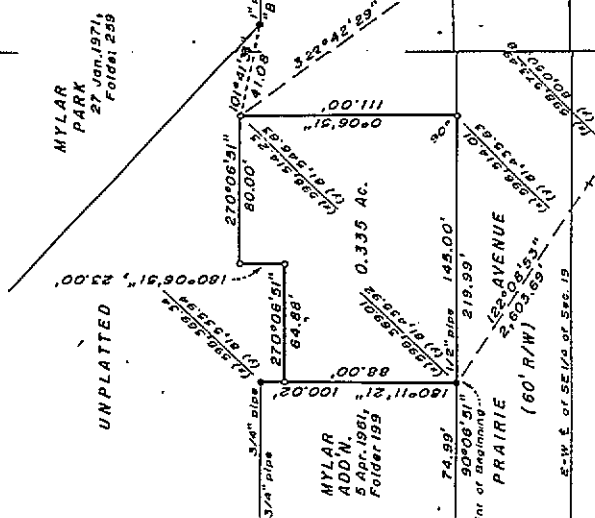
CONTROL DIAGRAM

- NOTES
1. • denotes monument found, as shown.
  2. 0 denotes 5/8" dia. x 24" long rebar w/ chromium cap set.
  3. ▲ City of Cheyenne control station, concrete monument w/ brass tablet.
  4. Azimuths, coordinates and 1,000-foot marginal grid ticks based on City of Cheyenne Datum.
  5. Distances based on measurements by electronic means.

METRIC CONVERSIONS  
 One foot = 0.3048 meter  
 One acre = 0.4047 hectare  
 Note: By agreement of 1959, the metric conversion is equated as:  
 One yard = 0.9144 international meter.



16.03  
 23.2  
 Plat Book 292.  
 Cyrena  
 Florence  
 Florence  
 Florence



### APPROVALS

Approved by the Cheyenne - Laramie County Regional  
 Planning Commission this 15th day of May, 1978.  
 City Secretary  
 Mayor

Approved by the City Council of the City of Cheyenne  
 this \_\_\_ day of June, 1978.  
 Mayor

Approved by the Board of County Commissioners of  
 Laramie County this \_\_\_ day of \_\_\_\_\_, 1978.

Attest: County Clerk  
 Chairman of the Board

# Flohr Addition

## TO THE CITY OF CHEYENNE

SITUATE IN THE NW 1/4 OF THE SE 1/4 OF  
 SECTION 19, T. 14N., R. 66W., 6th P.M.  
 LARAMIE COUNTY, WYOMING

R.L. HUDSON - LAND SURVEYOR  
 Cheyenne, Wyoming  
 April 1978 Job No. 78-867