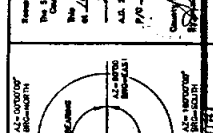


VICINITY MAP

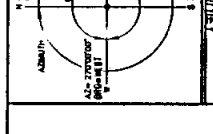
FILED
 The State of Wyoming } ss
 County of Laramie }
 I, Clerk of the County, do hereby certify that the foregoing plat was filed for record in the office of the County Clerk on this 22nd day of March, 2005.
 My Comm. Expires 1/15/06

FILED RECORD
 Cheyenne & Fremont
 City Clerk



LEGEND

- 3/4" ALUMINUM CAP STAMPED WITH "16"
- 1/2" ALUMINUM CAP STAMPED WITH "16"
- 1/4" ALUMINUM CAP STAMPED WITH "16"
- CITY OF CHEYENNE CONTROL MONUMENT
- 1/2" ALUMINUM CAP STAMPED WITH "16"
- 1/4" ALUMINUM CAP STAMPED WITH "16"



DEDICATION

NOTE

- 1) BASE OF RECORDING MONUMENTS AS SHOWN ON THIS MAP IS APPROVED FROM CITY OF CHEYENNE CONTROL MONUMENTS "16" AND "16".
- 2) TEMPORARY MONUMENTS SET WITH A 1/4" ALUMINUM CAP AND APPROVED BY THE CITY OF CHEYENNE.
- 3) MONUMENTS SET WITH A 1/4" ALUMINUM CAP AND APPROVED BY THE CITY OF CHEYENNE.

ACKNOWLEDGEMENT

STATE OF WYOMING) ss
 COUNTY OF LARAMIE)
 I, the undersigned, do hereby certify that the foregoing plat was filed for record in the office of the County Clerk on this 22nd day of March, 2005.
 My Commission Expires 1/15/06

APPROVALS

Approved by the City Council of the City of Cheyenne, Wyoming on this 22nd day of March, 2005.
 Development Director
 Attest: *[Signature]* City Clerk

CERTIFICATE OF SURVEYOR

I, John A. Stahl, Registered Professional Land Surveyor in the State of Wyoming, hereby certify that this plat of FUSSELLMAN ADDITION was prepared and reduced to scale from a true and correct survey of the land shown hereon, and that the monuments are set and found as shown on this plat in accordance with the said survey of this land as approved in respect to the date of my knowledge.

ACKNOWLEDGEMENT

STATE OF WYOMING) ss
 COUNTY OF LARAMIE)
 I, the undersigned, do hereby certify that the foregoing plat was filed for record in the office of the County Clerk on this 22nd day of March, 2005.
 My Commission Expires 1/15/06

APPROVALS

Approved by the City Council of the City of Cheyenne, Wyoming on this 22nd day of March, 2005.
 Development Director
 Attest: *[Signature]* City Clerk

CERTIFICATE OF SURVEYOR

I, John A. Stahl, Registered Professional Land Surveyor in the State of Wyoming, hereby certify that this plat of FUSSELLMAN ADDITION was prepared and reduced to scale from a true and correct survey of the land shown hereon, and that the monuments are set and found as shown on this plat in accordance with the said survey of this land as approved in respect to the date of my knowledge.

ACKNOWLEDGEMENT

STATE OF WYOMING) ss
 COUNTY OF LARAMIE)
 I, the undersigned, do hereby certify that the foregoing plat was filed for record in the office of the County Clerk on this 22nd day of March, 2005.
 My Commission Expires 1/15/06

APPROVALS

Approved by the City Council of the City of Cheyenne, Wyoming on this 22nd day of March, 2005.
 Development Director
 Attest: *[Signature]* City Clerk

CERTIFICATE OF SURVEYOR

I, John A. Stahl, Registered Professional Land Surveyor in the State of Wyoming, hereby certify that this plat of FUSSELLMAN ADDITION was prepared and reduced to scale from a true and correct survey of the land shown hereon, and that the monuments are set and found as shown on this plat in accordance with the said survey of this land as approved in respect to the date of my knowledge.

ACKNOWLEDGEMENT

STATE OF WYOMING) ss
 COUNTY OF LARAMIE)
 I, the undersigned, do hereby certify that the foregoing plat was filed for record in the office of the County Clerk on this 22nd day of March, 2005.
 My Commission Expires 1/15/06

APPROVALS

Approved by the City Council of the City of Cheyenne, Wyoming on this 22nd day of March, 2005.
 Development Director
 Attest: *[Signature]* City Clerk

CERTIFICATE OF SURVEYOR

I, John A. Stahl, Registered Professional Land Surveyor in the State of Wyoming, hereby certify that this plat of FUSSELLMAN ADDITION was prepared and reduced to scale from a true and correct survey of the land shown hereon, and that the monuments are set and found as shown on this plat in accordance with the said survey of this land as approved in respect to the date of my knowledge.

ACKNOWLEDGEMENT

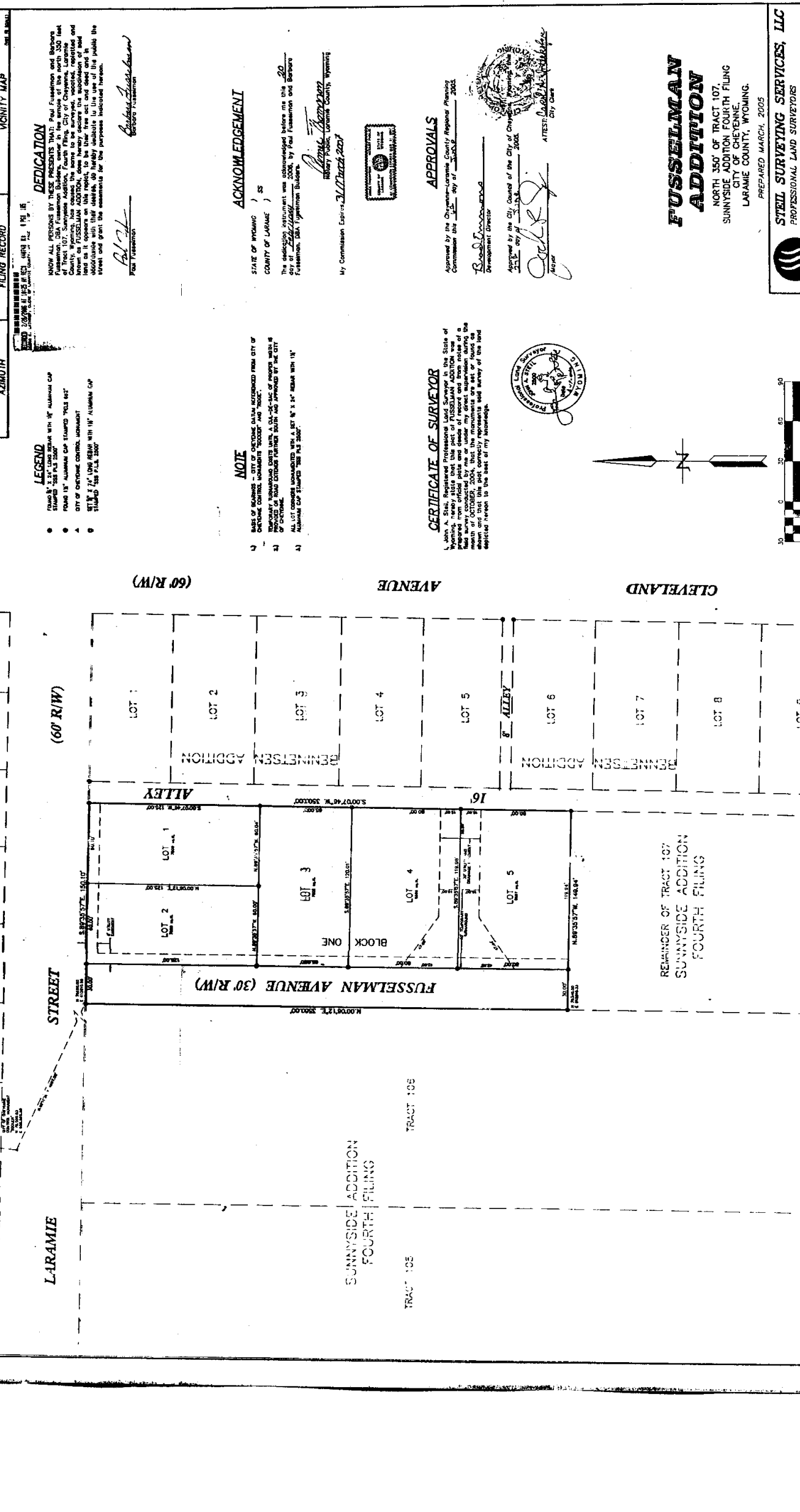
STATE OF WYOMING) ss
 COUNTY OF LARAMIE)
 I, the undersigned, do hereby certify that the foregoing plat was filed for record in the office of the County Clerk on this 22nd day of March, 2005.
 My Commission Expires 1/15/06

APPROVALS

Approved by the City Council of the City of Cheyenne, Wyoming on this 22nd day of March, 2005.
 Development Director
 Attest: *[Signature]* City Clerk

CERTIFICATE OF SURVEYOR

I, John A. Stahl, Registered Professional Land Surveyor in the State of Wyoming, hereby certify that this plat of FUSSELLMAN ADDITION was prepared and reduced to scale from a true and correct survey of the land shown hereon, and that the monuments are set and found as shown on this plat in accordance with the said survey of this land as approved in respect to the date of my knowledge.



Complex 425

STELL SURVEYING SERVICES, LLC
 PROFESSIONAL LAND SURVEYORS
 1102 WEST 19th STREET, P.O. BOX 5073
 CHEYENNE, WYOMING 82001

FUSSELLMAN ADDITION
 NORTH 350' OF TRACT 107,
 SUNNYSIDE ADDITION FOURTH FILING
 CITY OF CHEYENNE,
 LARAMIE COUNTY, WYOMING.
 PREPARED MARCH, 2005

STELL SURVEYING SERVICES, LLC
 PROFESSIONAL LAND SURVEYORS
 1102 WEST 19th STREET, P.O. BOX 5073
 CHEYENNE, WYOMING 82001

SUBDIVISION SETUP FORM

Subdivision Proper Name FUSSELMAN ADDITION
 Received from JOHN STEIL
 Grantor PAUL FUSSELMAN, BARBARA FUSSELMAN, FUSSELMAN BUILDERS Document Date 6/27/2005
 Grantee IN RE FUSSELMAN ADDITION
 Legal Description N350' TR107 SUNNYSIDE ADD 04F

SUBDIVISION INFORMATION

Short Alpha Name FUSSELMAN ADD Number 2987
 Block Name BLOCK Lot Name LOT--
 Replats Previous Platting Y/N Defunct Subdivision Y/N
 Covenants Book/Page COMP Old Hard Copy Book/Number _____

ABSTRACTING INFORMATION

For suffix 40-69 (Existing Parcels Affected)

TWN/SUBD	RNG/BLOCK	BEGIN SEC/LOT	END SEC/LOT	R/V SW
<u>1159</u>	<u>NONE</u>	<u>107</u>		<u>435025</u>

For suffix 70-99 (New Parcels Created)

BLOCK #	BEGIN LOT	END LOT	BLOCK #	BEGIN LOT	END LOT
<u>2987 1</u>	<u>1</u>	<u>5</u>			

020-045 (R12/01)