



FILING RECORD
271332

The State of Wyoming
County of Laramie } ss.
I, M.L. Huxson, a Land Surveyor registered in the State
of Wyoming do hereby certify that this plat of Grand Pre
Circle subdivision has been prepared from the field notes
of a survey made by me on the 7th day of July, 1972 and
that the same are true and correct and that the same are
the subdivision shown herein as monumented on the ground
and that said subdivision embraces all of the following as
scribed lands, to wit:

- NOTES**
- 6 sections 3-4" dia. iron pipe corners.
 0. 600' x 600' dia. x 2-4" long rebar with SURV-KAP set.
 - Basis of Bearing - As shown, record coil of steel received in Book 638 of page 109 reads S 0°02' W, 637.6'.
 - The west line of Redmond Addition, reads 1,828.9'.

John B. Williams
County Clerk & Ex-Officio Register of Deeds
By *James B. Crawford* Deputy

CERTIFICATE OF SURVEYOR

State of Wyoming } ss.
County of Laramie }
I, M.L. Huxson, a Land Surveyor registered in the State
of Wyoming do hereby certify that this plat of Grand Pre
Circle subdivision has been prepared from the field notes
of a survey made by me on the 7th day of July, 1972 and
that the same are true and correct and that the same are
the subdivision shown herein as monumented on the ground
and that said subdivision embraces all of the following as
scribed lands, to wit:

Beginning at the northwest corner of that subdivision known
as Redmond Addition to the City of Cheyenne as shown on the
plat thereon, recorded and filed with the Laramie County
Clerk and Ex-Officio Register of Deeds, on the 14th day of
July, 1972, and containing 0.428 acres, to the northeast
corner of a tract conveyed to Marjory Anderson by Warranty
Deed, as described and recorded in Book 638 of page 109 on
the 26th day of July, 1958; thence S 0°02' W, along the line
common to said subdivision and tract, a distance of 656.12
feet to the southeast corner of aforementioned tract, thence
S 89°51' W, along the south line of aforementioned tract, a
distance of 145.78' W, along east mentioned line, a
distance of 143.78 feet to the southeast corner of aforementioned tract,
thence S 89°51' E, a distance of 145.78 feet to a point
SW 1/4 of Section 19, T. 14N., R. 68W., 6th P.M.; thence
S 0°02' W, along east mentioned line, a distance of 128.00
feet; thence N 89°51' E, a distance of 145.78 feet to a point
SW 1/4 of Section 19, T. 14N., R. 68W., 6th P.M.; thence
S 89°51' E, 200.00 feet to the true point of beginning, a distance
of 128.00 feet to the true point of beginning; containing 0.428
acres, more or less.

John B. Williams
Wyoming L.S. No. 219

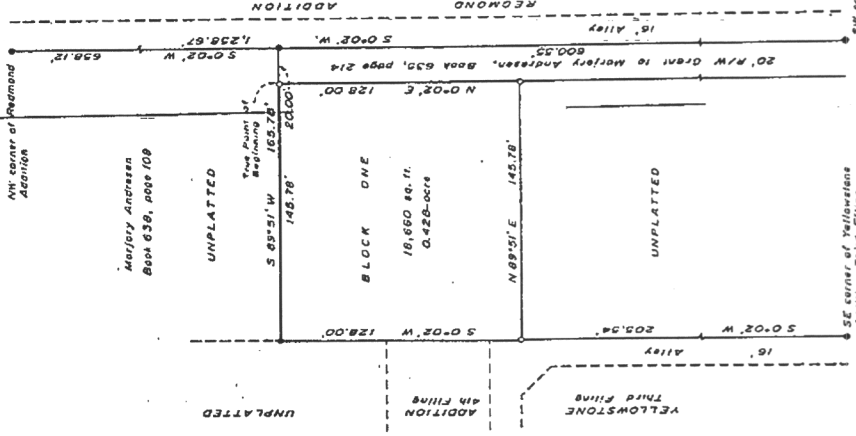
DECLARATION

KNOW ALL MEN BY THESE PRESENTS, that William F
and John A. Grand Pre, surveyors, owners in fee simple of the
above described land, do hereby declare the sub-
division of the above described land as shown on this plat,
to be their free and voluntary act and deed.

William F. Grand Pre
William F. Grand Pre
John A. Grand Pre
John A. Grand Pre

ACKNOWLEDGMENT

State of Wyoming } ss.
County of Laramie }
On this 14th day of October, 1972, before me, a
Notary Public in and for the State of Wyoming, the said
William F. Grand Pre and John A. Grand Pre, who by me duly sworn, did acknowledge the foregoing



APPROVALS

Approved by the Planning Commission of the City of Cheyenne this 16th day of September, 1972.
Chairman: *James B. Crawford*
Secretary: *John B. Williams*

Approved by the City Council of the City of Cheyenne this 13th day of September, 1972.
Mayor: *James B. Crawford*
City Clerk: *John B. Williams*

Approved by the Board of County Commissioners of Laramie County this 14th day of September, 1972.
Chairman: *John B. Williams*
County Clerk: *John B. Williams*

SW corner of Redmond Addition

SE corner of Yellowstone Addition, Third Filing

17

SCALE IN FEET 50

100

150

PLAT OF

Grand Pre Circle