

Dedication

Know All Men By These Presents That (Name of Corporation, Trust, Firm, Partnership, etc.) hereby do hereby dedicate to the public use of the State of Kentucky the following described land, to-wit: (Description of land) and the same shall be held in trust for the use and benefit of the public and shall be subject to the same laws and regulations as other public lands.

Witness My Hand and Seal of Office this 1st day of May, 1924.
 State Engineer, State of Kentucky

Legend

1. All lots shown on this map are of equal area, to-wit: 100 acres each.
2. The lots shown on this map are of equal area, to-wit: 100 acres each.
3. The lots shown on this map are of equal area, to-wit: 100 acres each.
4. The lots shown on this map are of equal area, to-wit: 100 acres each.
5. The lots shown on this map are of equal area, to-wit: 100 acres each.
6. The lots shown on this map are of equal area, to-wit: 100 acres each.
7. The lots shown on this map are of equal area, to-wit: 100 acres each.
8. The lots shown on this map are of equal area, to-wit: 100 acres each.
9. The lots shown on this map are of equal area, to-wit: 100 acres each.
10. The lots shown on this map are of equal area, to-wit: 100 acres each.

Notes

1. The lots shown on this map are of equal area, to-wit: 100 acres each.
2. The lots shown on this map are of equal area, to-wit: 100 acres each.
3. The lots shown on this map are of equal area, to-wit: 100 acres each.
4. The lots shown on this map are of equal area, to-wit: 100 acres each.
5. The lots shown on this map are of equal area, to-wit: 100 acres each.
6. The lots shown on this map are of equal area, to-wit: 100 acres each.
7. The lots shown on this map are of equal area, to-wit: 100 acres each.
8. The lots shown on this map are of equal area, to-wit: 100 acres each.
9. The lots shown on this map are of equal area, to-wit: 100 acres each.
10. The lots shown on this map are of equal area, to-wit: 100 acres each.

Acknowledgment 1

State of Kentucky
 County of Kenton
 I, the undersigned, Clerk of the County of Kenton, do hereby certify that the foregoing is a true and correct copy of the original record of the same as the same appears in the office of the Clerk of the County of Kenton, this 1st day of May, 1924.

Witness My Hand and Seal of Office this 1st day of May, 1924.
 Clerk of the County of Kenton

Acknowledgment 2

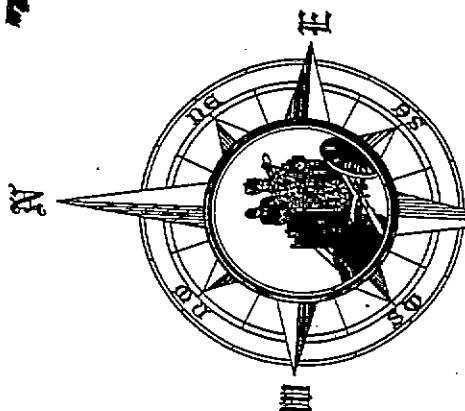
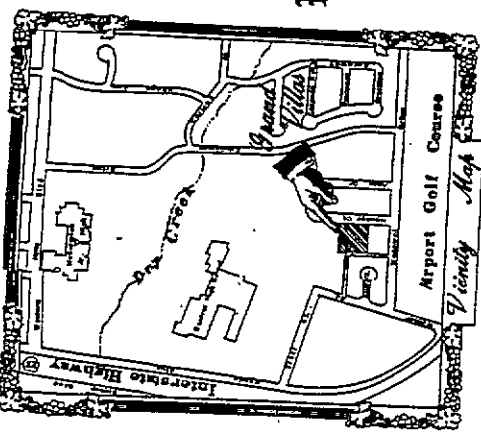
State of Kentucky
 County of Kenton
 I, the undersigned, Clerk of the County of Kenton, do hereby certify that the foregoing is a true and correct copy of the original record of the same as the same appears in the office of the Clerk of the County of Kenton, this 1st day of May, 1924.

Acknowledgment 2

State of Kentucky
 County of Kenton
 I, the undersigned, Clerk of the County of Kenton, do hereby certify that the foregoing is a true and correct copy of the original record of the same as the same appears in the office of the Clerk of the County of Kenton, this 1st day of May, 1924.

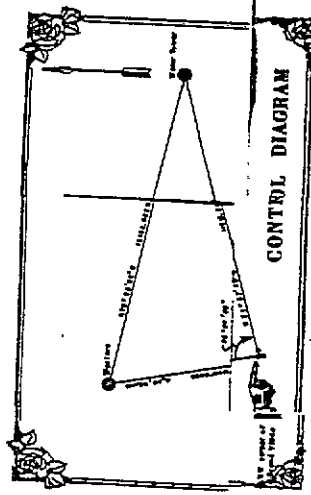
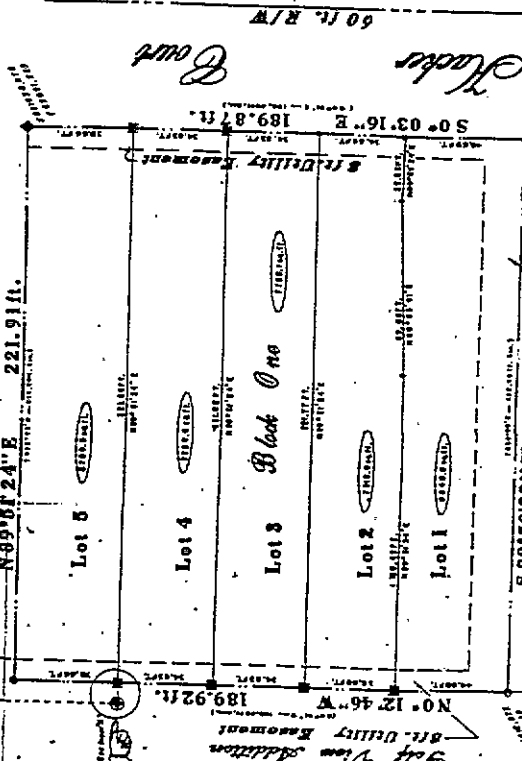
Acknowledgment 3

State of Kentucky
 County of Kenton
 I, the undersigned, Clerk of the County of Kenton, do hereby certify that the foregoing is a true and correct copy of the original record of the same as the same appears in the office of the Clerk of the County of Kenton, this 1st day of May, 1924.



Approvals

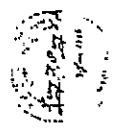
Approved by the Board of Directors of the Fairway Addition, this 1st day of May, 1924.
 Approved by the Board of Directors of the Fairway Addition, this 1st day of May, 1924.
 Approved by the Board of Directors of the Fairway Addition, this 1st day of May, 1924.



Filing Receipt

FILED
 MAY 1 1924
 CLERK OF THE COUNTY OF KENTON

Grand Road and *Right of*
Block 3
FAIRWAY ADDITION
 2nd FILING
 a Subdivision Situate in the N 1/2
 Section 24 of T. 14 N. of R. 67 W.
 of the 6th P.M.
 Grant County, Kentucky



State of Kentucky
 County of Kenton