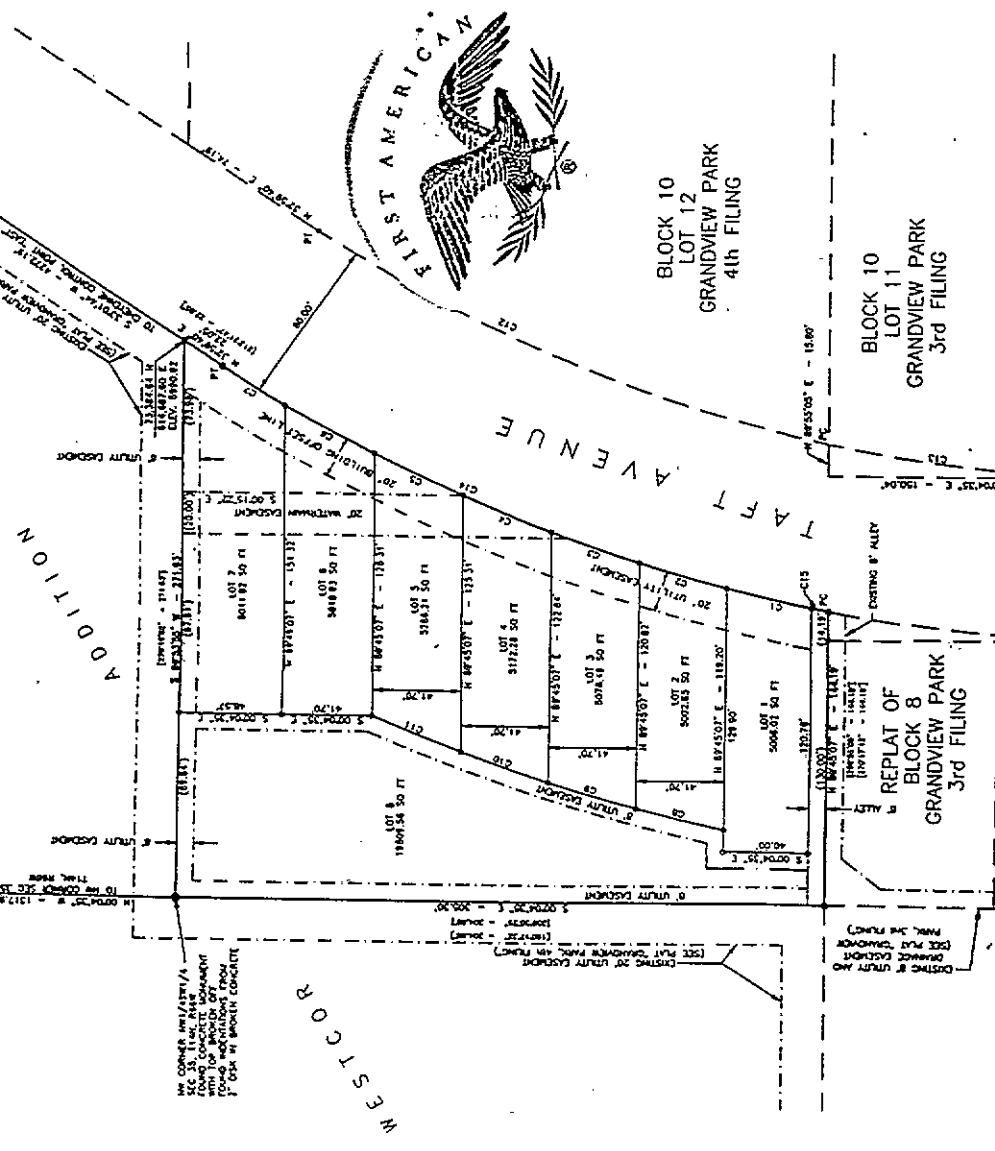


VACATION STATEMENT
 HAS PAUL HENRY WAIGHTS HALF OF THE 11.60 FOOT ALLEY AS LOCATED AT LOT 11, BLOCK 8, GRANDVIEW PARK, 4th FILING.



CURVE TABLE

CHORD BEARING	CHORD LENGTH	ARC LENGTH
C1	52.74 20.00°	10.00
C2	52.74 20.00°	10.00
C3	52.74 20.00°	10.00
C4	52.74 20.00°	10.00
C5	52.74 20.00°	10.00
C6	52.74 20.00°	10.00
C7	52.74 20.00°	10.00
C8	52.74 20.00°	10.00
C9	52.74 20.00°	10.00
C10	52.74 20.00°	10.00
C11	52.74 20.00°	10.00
C12	52.74 20.00°	10.00
C13	52.74 20.00°	10.00
C14	52.74 20.00°	10.00
C15	52.74 20.00°	10.00
C16	52.74 20.00°	10.00
C17	52.74 20.00°	10.00
C18	52.74 20.00°	10.00
C19	52.74 20.00°	10.00
C20	52.74 20.00°	10.00
C21	52.74 20.00°	10.00
C22	52.74 20.00°	10.00
C23	52.74 20.00°	10.00
C24	52.74 20.00°	10.00
C25	52.74 20.00°	10.00
C26	52.74 20.00°	10.00
C27	52.74 20.00°	10.00
C28	52.74 20.00°	10.00
C29	52.74 20.00°	10.00
C30	52.74 20.00°	10.00
C31	52.74 20.00°	10.00
C32	52.74 20.00°	10.00
C33	52.74 20.00°	10.00
C34	52.74 20.00°	10.00
C35	52.74 20.00°	10.00
C36	52.74 20.00°	10.00
C37	52.74 20.00°	10.00
C38	52.74 20.00°	10.00
C39	52.74 20.00°	10.00
C40	52.74 20.00°	10.00
C41	52.74 20.00°	10.00
C42	52.74 20.00°	10.00
C43	52.74 20.00°	10.00
C44	52.74 20.00°	10.00
C45	52.74 20.00°	10.00
C46	52.74 20.00°	10.00
C47	52.74 20.00°	10.00
C48	52.74 20.00°	10.00
C49	52.74 20.00°	10.00
C50	52.74 20.00°	10.00
C51	52.74 20.00°	10.00
C52	52.74 20.00°	10.00
C53	52.74 20.00°	10.00
C54	52.74 20.00°	10.00
C55	52.74 20.00°	10.00
C56	52.74 20.00°	10.00
C57	52.74 20.00°	10.00
C58	52.74 20.00°	10.00
C59	52.74 20.00°	10.00
C60	52.74 20.00°	10.00
C61	52.74 20.00°	10.00
C62	52.74 20.00°	10.00
C63	52.74 20.00°	10.00
C64	52.74 20.00°	10.00
C65	52.74 20.00°	10.00
C66	52.74 20.00°	10.00
C67	52.74 20.00°	10.00
C68	52.74 20.00°	10.00
C69	52.74 20.00°	10.00
C70	52.74 20.00°	10.00
C71	52.74 20.00°	10.00
C72	52.74 20.00°	10.00
C73	52.74 20.00°	10.00
C74	52.74 20.00°	10.00
C75	52.74 20.00°	10.00
C76	52.74 20.00°	10.00
C77	52.74 20.00°	10.00
C78	52.74 20.00°	10.00
C79	52.74 20.00°	10.00
C80	52.74 20.00°	10.00
C81	52.74 20.00°	10.00
C82	52.74 20.00°	10.00
C83	52.74 20.00°	10.00
C84	52.74 20.00°	10.00
C85	52.74 20.00°	10.00
C86	52.74 20.00°	10.00
C87	52.74 20.00°	10.00
C88	52.74 20.00°	10.00
C89	52.74 20.00°	10.00
C90	52.74 20.00°	10.00
C91	52.74 20.00°	10.00
C92	52.74 20.00°	10.00
C93	52.74 20.00°	10.00
C94	52.74 20.00°	10.00
C95	52.74 20.00°	10.00
C96	52.74 20.00°	10.00
C97	52.74 20.00°	10.00
C98	52.74 20.00°	10.00
C99	52.74 20.00°	10.00
C100	52.74 20.00°	10.00

- NOTES:**
1. FOUND REBAR WITH ALUMINUM CAP MARKED PLS 2500
 2. SET PROVISION SURVEY.
 3. 0 DOTES LOCATIONS OF REBAR WITH ALUMINUM CAP MARKED PLS 2500 AND THE SURVEY. RECORDED WITH PLS 2500 IN THE CITY RECORDS AS SUBDIVISION CORNER MONUMENTS (AS PER SUBDIVISION REGULATIONS CHAPTER 4, SECTION 2, PARAGRAPH 4, SUPPLEMENT 8)
 4. 0 DOTES 5/8" X 2' REBAR WITH PLASTIC CAP MARKED PLS 5811 FROM STATION "EAST" AND THE NE CORNER OF LOT 11, BLOCK 8, GRANDVIEW PARK, 4th FILING.
 5. EXISTING ZONING: R4-1
 6. DASHED LINES INDICATE AN EAST-WEST BOUNDARY.
 7. DOMESTIC WATER AND WASTEWATER SYSTEMS WILL TAP INTO EXISTING CITY SYSTEMS.
 8. () DOTES CALL OF OPTICAL PLAT "WESTON ADDITION" AS PLATTED BY "GRANDVIEW PARK, 4th FILING."
 9. () DOTES CALL OF OPTICAL PLAT "GRANDVIEW PARK, 4th FILING."

DEDICATION

DOES ALL THESE PARCELS IN THESE RECORDS THAT BEING IN DEEDS, DEEDS OF THE CITY OF LOS ANGELES, COUNTY OF LOS ANGELES, CITY OF LOS ANGELES, PLATTED AND RECORDED IN THE CITY RECORDS AS SUBDIVISIONS, AND THE ALLEYS AND STREETS THEREIN, TO THE USE OF THE PUBLIC, AND TO BE OPENED TO THE PUBLIC FOR THE PURPOSES OF DEDICATION.

KEITH L. DOBSON

ACKNOWLEDGMENTS

STATE OF CALIFORNIA
 COUNTY OF LOS ANGELES

THE DEDICATION INSTRUMENT WAS ACKNOWLEDGED BEFORE ME THIS 22ND DAY OF MAY, 1984 BY KEITH L. DOBSON.

KEITH L. DOBSON
 REGISTERED PROFESSIONAL SURVEYOR
 NO. 10000
 COUNTY OF LOS ANGELES, CALIFORNIA



APPROVALS

APPROVED BY THE CITY ENGINEER - LAMAR COUNTY REGIONAL PLANNING COMMISSION
 THIS 22ND DAY OF MAY, 1984.

APPROVED BY THE CITY COUNCIL OF THE CITY OF LOS ANGELES, THIS 22ND DAY OF MAY, 1984.

APPROVED BY THE CITY ENGINEER, COUNTY OF LOS ANGELES
 THIS 22ND DAY OF MAY, 1984.

SURVEYORS CERTIFICATE

STATE OF CALIFORNIA
 COUNTY OF LOS ANGELES

I, ROBERT W. TRACY, REGISTERED PROFESSIONAL SURVEYOR, NO. 10000, COUNTY OF LOS ANGELES, CALIFORNIA, DO HEREBY CERTIFY THAT THIS PLAT OF CONVEYANCE WAS PREPARED BY ME OR UNDER MY CLOSE PERSONAL SUPERVISION AND THAT THE PLAT CORRECTLY AND ACCURATELY REPRESENTS THE ACTUAL SURVEY AND PLAT.



REPLAT OF BLOCK 8 GRANDVIEW PARK 3rd FILING

REPLAT OF BLOCK 8 GRANDVIEW PARK 3rd FILING
 GRANDVIEW PARK, 4th FILING
 LAMAR COUNTY REGIONAL PLANNING COMMISSION
 CITY OF LOS ANGELES, CALIFORNIA