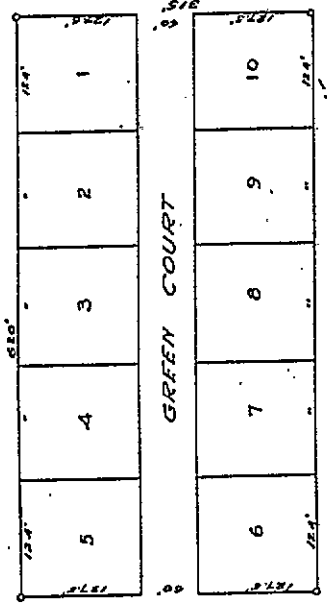




ENGINEERS' CERTIFICATE

State of Wyoming } ss.
 County of Laramie } ss.
 I, T. H. Baldwin, of Cheyenne, Wyoming, here by
 certify that this plat was made from notes taken
 during an actual survey made under my direction
 in July, 1954 that it accurately represents the lots
 and streets as marked on the ground by iron
 pipes set at all block corners and iron spikes
 placed in this subdivision is all of the South
 1/2 of Tract 19, Dell Range Addition, Laramie
 County, Wyoming.

T. H. Baldwin
 Surveyor



DEDICATION
 known all men by these presents that Marie Green
 owner in fee simple of the land embraced in the
 South 1/2 of Tract 19, Dell Range Addition, Laramie
 County, Wyoming, does hereby dedicate the sub-
 division of the within described land as appear
 on this plat to the public use and does hereby
 accede to the use of the public forever and in
 the streets shown hereon.

Witness my hand and seal this 19th day of July, 1954.
 Marie Green

ACKNOWLEDGEMENT

State of Wyoming } ss.
 County of Laramie } ss.
 on this 19th day of July, 1954, a certain Marie
 Green, Public in and for the State of Wyoming,
 personally appeared Marie Green, known to me
 to be the person described in and who executed the
 within and foregoing dedication and acknowledged
 her instrument to be her free act and deed,
 in witness whereof I have hereunto set my hand and
 official seal of my office the day and year
 first above written.

Notary Public for Wyoming
 of Cheyenne, Wyoming

679495

The State of Wyoming } ss.
 County of Laramie } ss.
 This instrument was filed for record
 on the 19th day of July, 1954.
 A. D. 1954
 Notary Public
 County Clerk & Ex-Officio Register of Deeds
 of Cheyenne, Wyoming

GREEN SUBDIVISION
 OF THE SOUTH HALF OF TRACT NO. 19
 DELL RANGE ADDITION
 LARAMIE COUNTY, WYOMING
 Scale 1"=100'

