



**SURVEYORS' CERTIFICATE**

The State of Wyoming )  
 County of Laramie ) ss  
 I, EDWIN KIBBY, a Professional Engineer and Land Surveyor registered in the State of Wyoming, do hereby certify that the plat hereon made from notes taken from an actual survey made by me and my assistants in the year 1971, and which is a true and correct copy of the original plat on file in my office, and which is a true and correct copy of the original plat on file in the office of the Clerk of the County of Laramie, Wyoming, and is dedicated to the public, the original plat boundaries is unchanged.

*E. Edwyn Kibby*  
 Wyoming Reg. No. 638

**DEDICATION**

That all men by these presents, that Gilbert R. Palmer, owner in fee of the land hereon described, do hereby dedicate to the public, the land hereon described, to be his, his heirs and assigns, and that he and his heirs and assigns do hereby dedicate to the public, the land hereon described, to be his, his heirs and assigns, and that he and his heirs and assigns do hereby dedicate to the public, the land hereon described, to be his, his heirs and assigns.

*Gilbert R. Palmer*  
 Gilbert R. Palmer

**ACKNOWLEDGEMENT**

The State of Wyoming ) ss  
 County of Laramie )  
 On this 23rd day of August, 1971, before me, a Notary Public in and for the State of Wyoming, personally appeared Gilbert R. Palmer, to me known to be the person described in and who executed the within and foregoing instrument, and acknowledged, this instrument to be his free and voluntary act and deed, and that he intended by the execution hereof, to have the same recorded in the office of the Clerk of the County of Laramie, Wyoming, and that he intended that the same should have the effect and force of a deed.

*Dorothy J. Palmer*  
 Notary Public



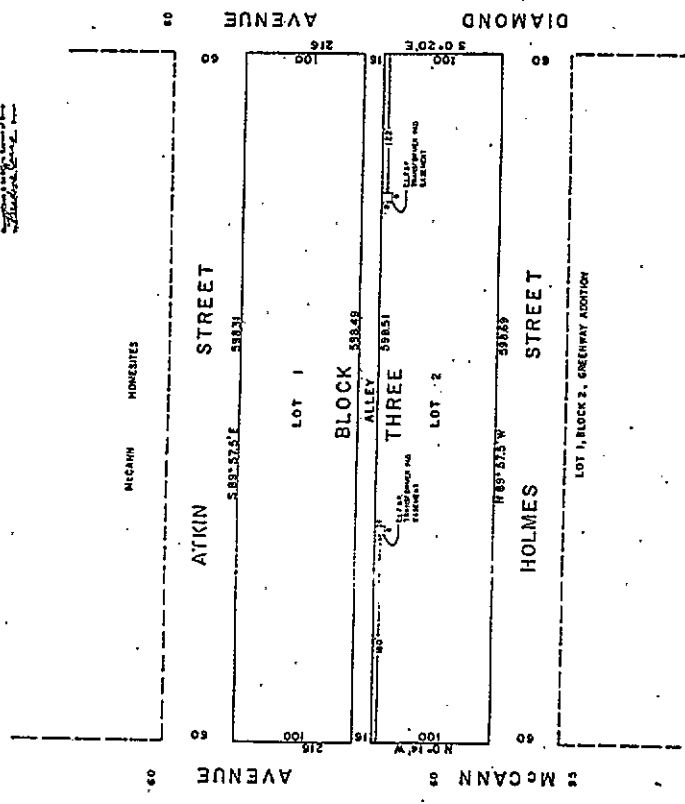
Recorded at Cheyenne, Wyoming

**SUBDIVISION OF BLOCK THREE  
 GREENWAY ADDITION**  
 Part of Section 34, T. 14 N., R. 66 W., 6th P.M.,  
 Laramie County, Wyoming  
 SCALE 1/320  
 AUGUST 1971

E. P. KELLEY & ASSOCIATES  
 Surveyors  
 1000 Broadway  
 Cheyenne, Wyoming 82001

205792

APPROVED BY THE BOARD OF SURVEYORS AND MAPPING ENGINEERS OF THE STATE OF WYOMING  
 August 15, 1971  
*Edwin Kibby*  
 State Surveyor



**APPROVALS**

Approved by the Planning Commission of the City of Cheyenne on this 22nd day of August, 1971.  
*John J. ...*  
 Approved by the City Commission of the City of Cheyenne on this 22nd day of August, 1971.  
*John J. ...*  
 Approved by the Board of County Commissioners of Laramie County on this 22nd day of August, 1971.  
*John J. ...*

