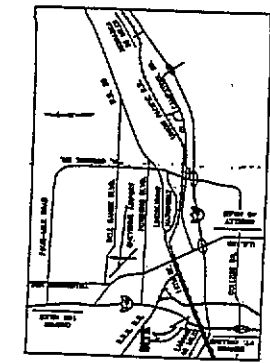


NOTES

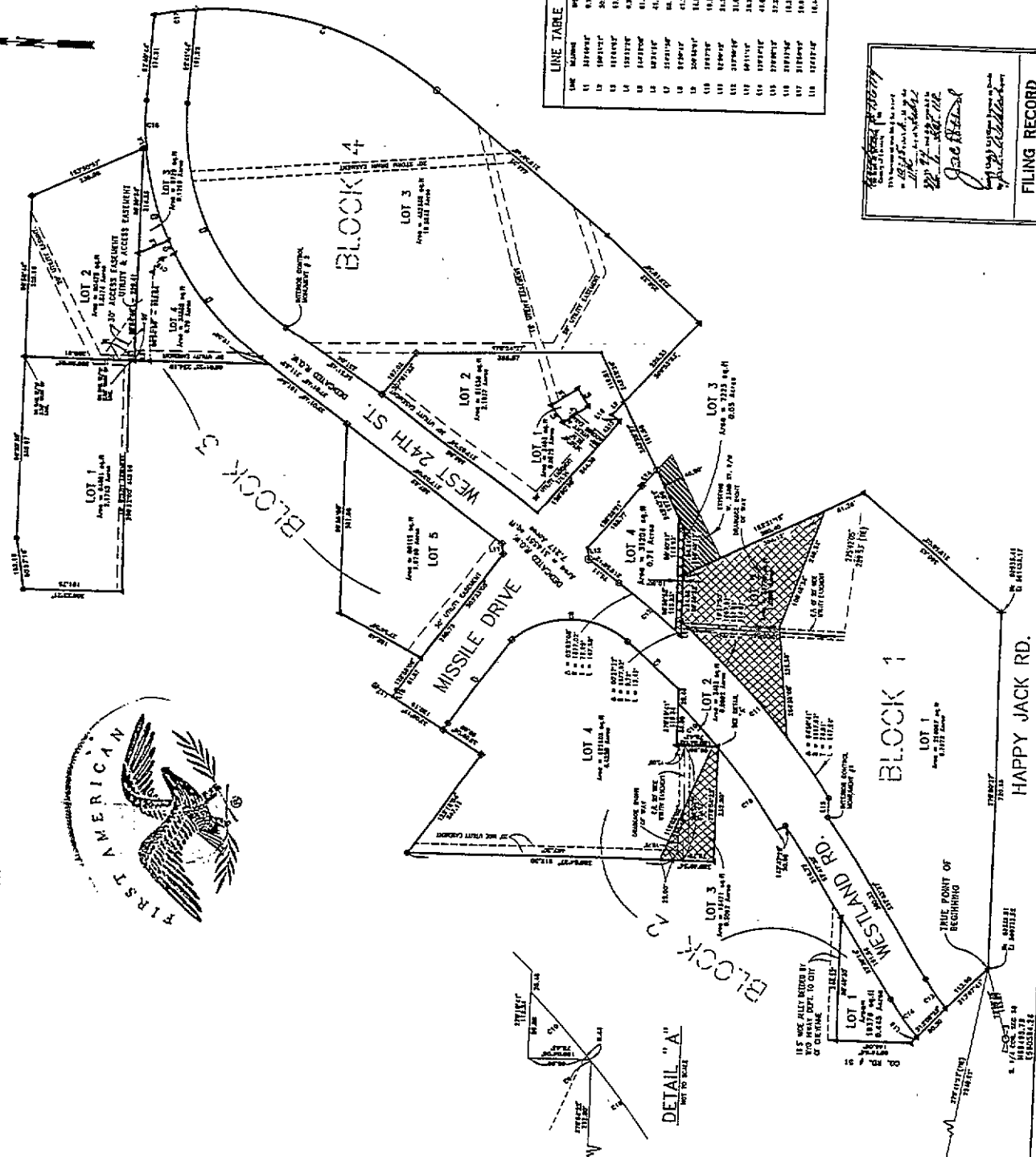
1. BASES OF ADJACENT City of Cheyenne Station from Station "Trapezoid" and "Hub No. 1".
2. WITHIN CONTROL INSTRUMENTS 3' BRASS CAPS IN CONC.



VICINITY MAP
N.T.S.

- LEGEND**
- ◆ FOUND 3/8" REBAR W/ALUM CAP STAMPED LS 2000
 - ◆ FOUND 3/8" REBAR W/ALUM CAP STAMPED LS 2017
 - ◆ FOUND 3" BRASS CAP IN CONC (B.O.W)
 - A. SET 5/8" REBAR
 - FOUND PK. HIL W/ SHIRER
 - ⊙ SET PK. HIL W/ SHIRER
 - ↑ FOUND REBAR
 - ⊙ FOUND POINT DOT AT EDGE CONC.
 - FOUND IN RAIL W/ 'X'
 - FOUND 'X' IN CONC.
 - FOUND AL. CAP STAMPED L.S. 500

- ▨ DRAINAGE DITCH
- ▨ DRAINAGE ROOF OF WAY
- ▨ DRAINAGE WEST 23RD STREET NORTH OF WAY



LINE TABLE		CURVE TABLE	
LINE	BEARING	START	END
1	112° 17' 00" W	112.17	112.17
2	112° 17' 00" W	112.17	112.17
3	112° 17' 00" W	112.17	112.17
4	112° 17' 00" W	112.17	112.17
5	112° 17' 00" W	112.17	112.17
6	112° 17' 00" W	112.17	112.17
7	112° 17' 00" W	112.17	112.17
8	112° 17' 00" W	112.17	112.17
9	112° 17' 00" W	112.17	112.17
10	112° 17' 00" W	112.17	112.17
11	112° 17' 00" W	112.17	112.17
12	112° 17' 00" W	112.17	112.17
13	112° 17' 00" W	112.17	112.17
14	112° 17' 00" W	112.17	112.17
15	112° 17' 00" W	112.17	112.17
16	112° 17' 00" W	112.17	112.17
17	112° 17' 00" W	112.17	112.17
18	112° 17' 00" W	112.17	112.17
19	112° 17' 00" W	112.17	112.17
20	112° 17' 00" W	112.17	112.17
21	112° 17' 00" W	112.17	112.17
22	112° 17' 00" W	112.17	112.17
23	112° 17' 00" W	112.17	112.17
24	112° 17' 00" W	112.17	112.17
25	112° 17' 00" W	112.17	112.17
26	112° 17' 00" W	112.17	112.17
27	112° 17' 00" W	112.17	112.17
28	112° 17' 00" W	112.17	112.17
29	112° 17' 00" W	112.17	112.17
30	112° 17' 00" W	112.17	112.17
31	112° 17' 00" W	112.17	112.17
32	112° 17' 00" W	112.17	112.17
33	112° 17' 00" W	112.17	112.17
34	112° 17' 00" W	112.17	112.17
35	112° 17' 00" W	112.17	112.17
36	112° 17' 00" W	112.17	112.17
37	112° 17' 00" W	112.17	112.17
38	112° 17' 00" W	112.17	112.17
39	112° 17' 00" W	112.17	112.17
40	112° 17' 00" W	112.17	112.17
41	112° 17' 00" W	112.17	112.17
42	112° 17' 00" W	112.17	112.17
43	112° 17' 00" W	112.17	112.17
44	112° 17' 00" W	112.17	112.17
45	112° 17' 00" W	112.17	112.17
46	112° 17' 00" W	112.17	112.17
47	112° 17' 00" W	112.17	112.17
48	112° 17' 00" W	112.17	112.17
49	112° 17' 00" W	112.17	112.17
50	112° 17' 00" W	112.17	112.17

Surveyed by
Checked by
Approved by
FILING RECORD

GRIFFIN ADDITION
 A PLAT OF
 AN ADDITION TO THE CITY OF CHEYENNE
 SITUATE IN THE S1/2 OF SECTION 36,
 TOWNSHIP 14 NORTH, RANGE 67 WEST, 6TH
 PRINCIPAL MERIDIAN, CITY OF CHEYENNE,
 LARAMIE COUNTY, WYOMING.

PROJECT TITLE: PLAT OF WESTLAND RD. / W. 24TH ST. &
 ADJACENT PROPERTY
 CLIENTS: PROPERTY OWNERS

JOB NO. 2-1773
 DESIGNED BY: R.N.
 APPROVED BY: D.G.
 SURVEYED BY: A.S.
 DRAWN BY: R.N./S.B.L.
 DATE: AUGUST, 1993

