



**DEDICATION**

Know all men by these presents, that Floyd Holland and Dale M. Smith, owners in fee simple of the land embraced in this HOLLAND-SMITH SUBDIVISION OF THE NORTH ONE-HALF OF TRACT 25, DELL RANGE ADDITION, do hereby declare the subdivision of said land, as appears on this plat, to be their free act and deed and in accordance with their desires, and do hereby dedicate to the use of the public forever all of the streets and alleys shown hereon.

Witness the hand of  
Floyd Holland  
 Witness the hand of  
Dale M. Smith

**ACKNOWLEDGEMENT**

The State of Wyoming) ss  
 County of Laramie

On this 14th day of June, A.D. 1957, before me, a Notary Public in and for the State of Wyoming, personally appeared Floyd Holland and Dale M. Smith, to me known to be the persons described in and who executed the within and foregoing dedication, and acknowledged said instrument to be their free act and deed and for the purpose therein mentioned.

IN WITNESS WHEREOF, I have hereunto set my hand and affixed the seal of my office the day and year first above written.  
 My commission expires April 14, 1961



**APPROVAL**

Approved by the City Commission of the City of Cheyenne, Laramie County, Wyoming this 24th day of June, A.D. 1957.  
Allen Mackay City Clerk  
W. H. Johnson Mayor



Approved by the Board of County Commissioners of Laramie County, Wyoming this 29th day of June, A.D. 1957.  
Robert C. Cook Chairman  
John H. ... County Clerk

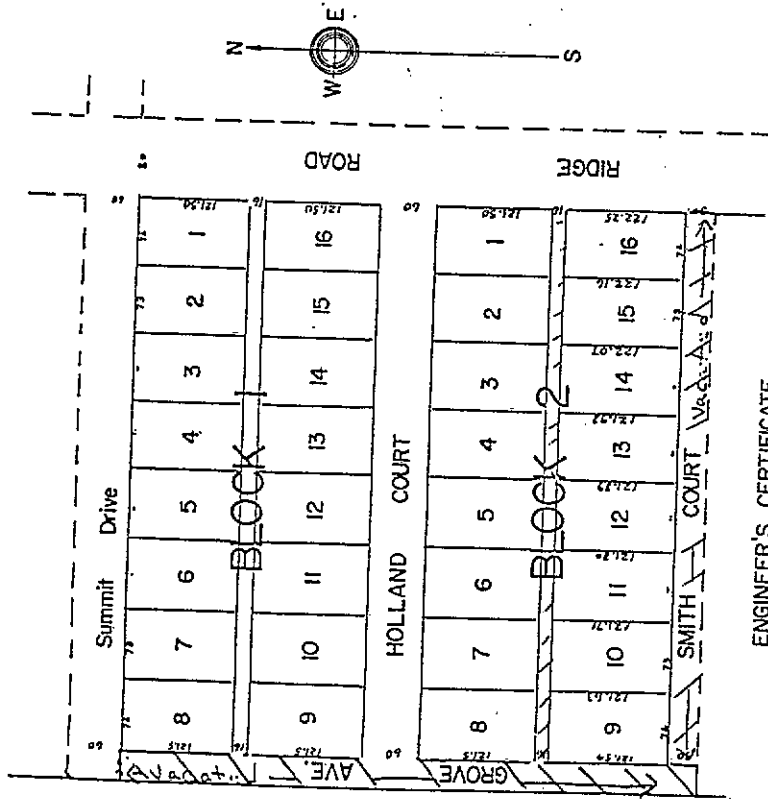


HOLLAND-SMITH SUBDIVISION OF  
 N 1/2 TRACT 25, DELL RANGE ADDITION  
 LARAMIE COUNTY, WYOMING

SCALE 1" = 100'

MAY, 1957

The State of Wyoming) ss  
 County of Laramie  
 This instrument was filed for record in the office of the County Clerk of Laramie County, Wyoming, on the 29th day of June, A.D. 1957, and the same was duly recorded in Book 100 of said County Clerk's Office at 11:15 o'clock AM.



**ENGINEER'S CERTIFICATE**

The State of Wyoming) ss  
 County of Laramie

I, T.H. Baldwin, of Cheyenne, Wyoming, hereby certify that this plat of HOLLAND-SMITH SUBDIVISION OF THE NORTH ONE-HALF OF TRACT 25, DELL RANGE ADDITION, was made from notes taken during an actual survey made under my direction in May 1957, that it correctly represents the lots, blocks, streets and alleys as marked on the ground by iron pipe set at all block corners and iron spikes set at all other lot corners; and that the land embraced in this subdivision is all of the N 1/2 Tract 25, Dell Range Addition, Laramie County, Wyoming.

T.H. Baldwin  
 Engr. Wyo. Reg. No. 18