



First American Title™

**These documents are provided by First American Title as a courtesy to you. Should you have any questions regarding these documents, please contact your Realtor or a Real Estate Attorney.**

*Please be advised that any provision contained in this document, or in a document that is attached, linked, or referenced in this document, that under applicable law illegally discriminates against a class of individuals based upon personal characteristics such as race, color, religion, sex, sexual orientation, gender identity, familial status, disability, national origin, or any other legally protected class, is illegal and unenforceable.*



**SURVEYOR'S CERTIFICATE**

The State of Wyoming } ss  
 County of Laramie }  
 I, Malcolm D. Martin, of Cheyenne, Wyoming, hereby certify that this plan of HOLMES ADDITION, FIRST FILING, was made from notes taken during an actual survey made under my direction in October, 1960, that it accurately represents the facts and streets, as marked on the ground by iron pipe set at all block corners and that the land embraced therein is all that part of the NE 1/4 NW 1/4 NW 1/4 and the W 1/2 W 1/2 NW 1/4 NE 1/4 NW 1/4, Section 34, T. 14 N., R. 66 W., of the Laramie County, Wyoming, containing 112 acres, more or less, and being more particularly described as follows: The southeast corner of the NE 1/4 NW 1/4 NW 1/4, thence N 0° 07' W, along the west boundary of said NE 1/4 NW 1/4 NW 1/4, a distance of 585.75 feet to a point on curve on the chord bears N 84° 35.26' E, a distance of 211.18 feet to the point of tangency, thence S 105° 53' E, along the south R/W line of Pershing Blvd., parallel to the north boundary of said Section 34, a distance of 585.75 feet to a point on the east boundary of the W 1/2 W 1/2 NW 1/4 NE 1/4 NW 1/4 of said Section 34, thence S 0° 10' E, along said east boundary, a distance of 530.65 feet to 0 point; thence N 89° 54' W, a distance of 164.23 feet to a point on the east boundary of the NE 1/4 NW 1/4 NW 1/4 of said Section 34, thence S 0° 10' E, along the east boundary of said NE 1/4 NW 1/4 NW 1/4, a distance of 80 feet to the southeast corner of said NE 1/4 NW 1/4 NW 1/4; thence N 89° 54' W, along the south boundary of said NE 1/4 NW 1/4 NW 1/4, a distance of 658.59 feet to the point of beginning.

*Malcolm D. Martin*  
 Wyo. Reg. No. 228

**DEDICATION**

Know all men by these presents, that Harold W. Holmes and Rhoda M. Holmes, owners in fee simple of the lands embraced in this plan and description of Holmes Addition, do hereby dedicate the subdivision of said lands, as operators on this plan, to be their private streets and in accordance with their desires, and do hereby dedicate to the use of the public forever all of the streets shown hereon.

Witness *Harold W. Holmes*  
 Witness *Rhoda M. Holmes*

**ACKNOWLEDGEMENT**

The State of Wyoming } ss  
 County of Laramie }  
 I, *Malcolm D. Martin*, A.D. 1960, before me, a Notary Public in and for the State of Wyoming, personally appeared *Harold W. Holmes and Rhoda M. Holmes*, to me known to be the persons who executed the above and foregoing dedication and acknowledged said instrument to be their free act and deed and for the purpose therein mentioned.

In Witness Whereof, I have hereunto set my hand and affixed the seal of my office the day and year first above written.

My Commission expires *June 20, 1964* Residing at *Cheyenne, Wyoming*  
*Malcolm D. Martin*  
 Notary Public

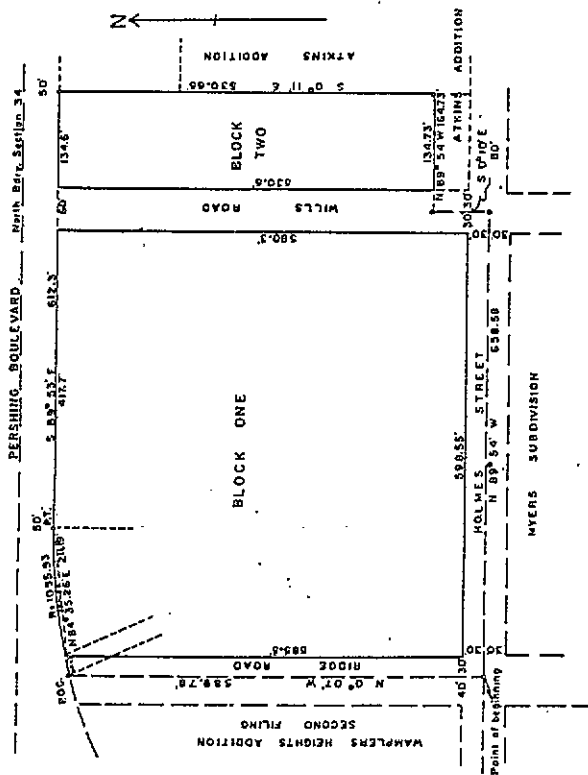
919509

**HOLMES ADDITION, FIRST FILING**

Part of NE 1/4 NW 1/4 NW 1/4 and Part of W 1/2 W 1/2 NW 1/4 NE 1/4 NW 1/4  
 Section 34, T. 14 N., R. 66 W., 6th P. M.  
 Laramie County, Wyoming

October, 1960

Scale 1" = 100'  
 Note: Curve dimensions are chord lengths.



**APPROVALS**

Approved by the City Commission of the City of Cheyenne this *2nd* day of *October*, A.D. 1960.

*North Ostrom*  
 Mayor

Approved by the Board of County Commissioners of Laramie County, Wyoming, this \_\_\_\_\_ day of \_\_\_\_\_, A.D. 1960.

*Malcolm D. Martin*  
 County Clerk

*Malcolm D. Martin*  
 Chairman

