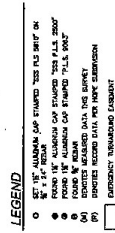
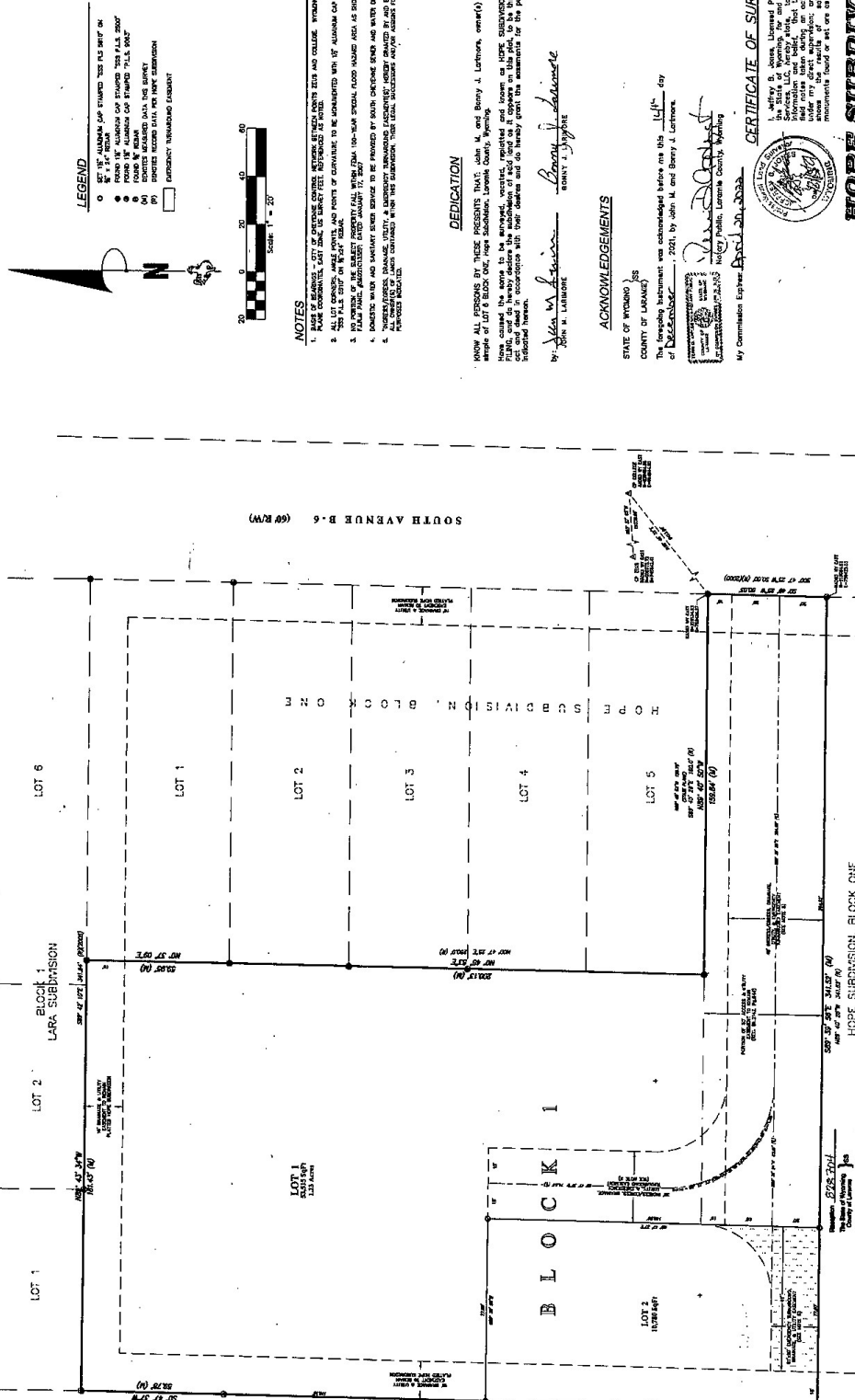


DOMESTIC WATER & SANITARY SEWER SERVICES TO BE PROVIDED BY SOUTH CHEVENNE WATER AND SEWER DISTRICT - FIRE PROTECTION TO BE PROVIDED BY FIRE DISTRICT #1 - THE SURFACE ESTATE OF THE LAND TO BE SUBDIVIDED IS SUBJECT TO FULL AND EFFECTIVE DEVELOPMENT OF THE MINERAL ESTATE.



NOTES

1. BASE OF EASEMENT - CITY OF CHEVENNE CONTAINS EASEMENT BETWEEN SOUTH AVENUE B-6 AND COLLAGE WYOMING STATE PARK. EASEMENT IS NOT SHOWN ON THIS MAP.
2. THE SURFACE ESTATE OF THE LAND IS SUBJECT TO FULL AND EFFECTIVE DEVELOPMENT OF THE MINERAL ESTATE.
3. THE SURFACE ESTATE OF THE LAND IS SUBJECT TO FULL AND EFFECTIVE DEVELOPMENT OF THE MINERAL ESTATE.
4. DOMESTIC WATER AND SANITARY SEWER SERVICE TO BE PROVIDED BY SOUTH CHEVENNE WATER AND SEWER DISTRICT.
5. FIRE PROTECTION TO BE PROVIDED BY FIRE DISTRICT #1.
6. THE SURFACE ESTATE OF THE LAND IS SUBJECT TO FULL AND EFFECTIVE DEVELOPMENT OF THE MINERAL ESTATE.

DEDICATION

I, JOHN M. LAMORE, County Clerk of Laramie County, Wyoming, do hereby certify that the foregoing plat of Block One, Hope Subdivision, containing Lots 1 through 8, is a true and correct copy of the original plat as the same appears in the office of the County Clerk of Laramie County, Wyoming.

ACKNOWLEDGEMENTS

I, JOHN M. LAMORE, County Clerk of Laramie County, Wyoming, do hereby certify that the foregoing plat of Block One, Hope Subdivision, containing Lots 1 through 8, is a true and correct copy of the original plat as the same appears in the office of the County Clerk of Laramie County, Wyoming.

CERTIFICATE OF SURVEYOR

I, Jeffrey B. Jones, Licensed Professional Land Surveyor in the State of Wyoming, do hereby certify that the foregoing plat of Block One, Hope Subdivision, containing Lots 1 through 8, is a true and correct copy of the original plat as the same appears in the office of the County Clerk of Laramie County, Wyoming.

HOPE SUBDIVISION 5th FILING

AN ADMINISTRATIVE REPORT OF
 LOT 6, BLOCK ONE, HOPE SUBDIVISION
 SITUATED IN THE SWSE1/4 OF SECTION 17,
 T13 N., R66 W., 6th P.M.,
 LARAMIE COUNTY, WYOMING.

PREPARED JULY 2021



VACATION STATEMENT

I, JOHN M. LAMORE, County Clerk of Laramie County, Wyoming, do hereby certify that the foregoing plat of Block One, Hope Subdivision, containing Lots 1 through 8, is a true and correct copy of the original plat as the same appears in the office of the County Clerk of Laramie County, Wyoming.

COUNTY ACKNOWLEDGEMENT

I, JOHN M. LAMORE, County Clerk of Laramie County, Wyoming, do hereby certify that the foregoing plat of Block One, Hope Subdivision, containing Lots 1 through 8, is a true and correct copy of the original plat as the same appears in the office of the County Clerk of Laramie County, Wyoming.

APPROVALS

Approved by the Laramie County Planning Director the
 County of Laramie, Wyoming
 Date: July 20, 2021

FILING RECORD

Recorded in the Office of the County Clerk of Laramie County, Wyoming on July 20, 2021.

VICINITY MAP

