

CITY CORNER, WEST
E = 87°14'27.00"
S = 271.56 (M)

CITY CORNER, EAST
E = 87°14'27.00"
S = 271.56 (M)

ADDITIONAL
10' ACCESS &
UTILITY EASEMENT
(THIS PLAT)

10' ACCESS &
UTILITY EASEMENT
PER PLAT OF
JENNAE VILLAGE

30' WIDE (AS SHOWN) AS
PLAT OF JENNAE PARK

10' ACCESS
UTILITY EASEMENT

39.00'

19.00'

19.00'

24.00'

24.00'

5.94'

14.00'

14.00'

140.08'

142.80'

142.80'

142.80'

142.80'

142.80'

142.80'

142.80'

142.80'

142.80'

142.80'

142.80'

142.80'

142.80'

142.80'

142.80'

142.80'

142.80'

142.80'

142.80'

142.80'

142.80'

142.80'

DEDICATION
KNOW ALL PERSONS BY PRESENTS THAT: Mar Padilla, Charlene Padilla and Christopher Dellos, as tenants in common, owners in fee simple of Lots 1-9, JENNAE VILLAGE, City of Cheyenne, Laramie County, Wyoming.

Has caused the same to be surveyed, vacated, replatted as "JENNAE VILLAGE, 2ND FILING, do hereby dedicating to the public the easements herein indicated to be necessary for the use of the public the streets and grant the easements for the purposes indicated hereon.

Mar Padilla
Mar Padilla
Charlene Padilla
Charlene Padilla
Christopher Dellos
Christopher Dellos

ACKNOWLEDGMENT

STATE OF WYOMING) SS
COUNTY OF LARAMIE)

The dedication instrument was acknowledged before me this 21st day of March, 2015, by Mar Padilla, Charlene Padilla and Christopher Dellos, as tenants in common.

Notary Public
Notary Public, Laramie County, Wyoming
My Commission Expires Nov. 9, 2015



ACKNOWLEDGMENTS

STATE OF WYOMING) SS
COUNTY OF LARAMIE)

The foregoing instrument was acknowledged before me this 21st day of March, 2015, by Mar Padilla, Charlene Padilla and Christopher Dellos, of the City Cheyenne, Wyoming.

Notary Public
Notary Public, Laramie County, Wyoming
My Commission Expires 12-21-15

APPROVALS

Approved by the City of Cheyenne Planning & Development Director
this 21st day of March, 2015.

Notary Public
Planning & Development Director, City of Cheyenne, Wyoming

Approved by the Cheyenne City Engineer
this 21st day of March, 2015.

Notary Public
City Engineer, City of Cheyenne, Wyoming



By Christopher Dellos
Christopher Dellos, Deputy

CERTIFICATE OF SURVEYOR

I, COTTON D. JONES, A REGISTERED PROFESSIONAL LAND SURVEYOR IN THE STATE OF WYOMING, HEREBY STATE, TO THE BEST OF MY KNOWLEDGE, INFORMATION AND BELIEF, THAT THIS PLAT OF JENNAE VILLAGE, 2ND FILING WAS PREPARED FROM FIELD NOTES TAKEN BY ME OR UNDER MY CLOSE PERSONAL SUPERVISION AND THAT THE MONUMENTS FOUND OR SET ARE AS SHOWN.



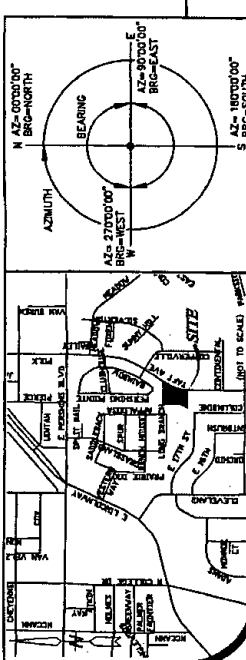
CURVE TABLE

CHORD BEARING	CHORD DISTANCE	ARC DISTANCE	ARC BEARING	ANGLE
01	100.00	100.00	90°00'00"	90°00'00"
02	141.42	141.42	45°00'00"	90°00'00"
03	173.21	173.21	30°00'00"	90°00'00"
04	200.00	200.00	22°37'00"	90°00'00"
05	223.61	223.61	18°46'00"	90°00'00"
06	244.14	244.14	15°19'00"	90°00'00"
07	261.31	261.31	12°30'00"	90°00'00"
08	275.50	275.50	10°00'00"	90°00'00"
09	287.18	287.18	8°15'00"	90°00'00"
10	296.74	296.74	6°45'00"	90°00'00"
11	304.61	304.61	5°30'00"	90°00'00"
12	311.31	311.31	4°27'00"	90°00'00"
13	317.34	317.34	3°34'00"	90°00'00"
14	322.81	322.81	2°51'00"	90°00'00"
15	327.81	327.81	2°15'00"	90°00'00"
16	332.41	332.41	1°45'00"	90°00'00"
17	336.61	336.61	1°21'00"	90°00'00"
18	340.41	340.41	1°00'00"	90°00'00"
19	343.81	343.81	0°42'00"	90°00'00"
20	346.81	346.81	0°27'00"	90°00'00"

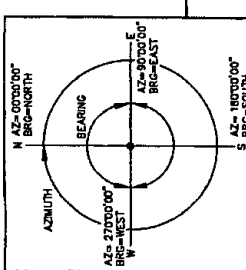
LEGEND

- Set #5 x 24" long rebar with 2" aluminum cap stamped "PLS 9634"
- Found 1/2" Aluminum Cap "PLS 2500"
- ⊙ Found Iron Pipe unless otherwise noted.
- (M) Indicates measured data this survey.
- (P) Indicates plat data per Jenmae Village on file with the Laramie County Clerk's Office

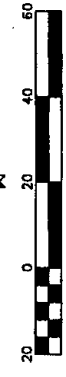
VICINITY MAP



AZIMUTH



Scale 1" = 20'



NOTES

- 1.) SUBJECT PROPERTY DOES NOT FALL WITHIN THE SPECIAL 100 YEAR FLOOD HAZARD AREA 56021C1054F DATED JANUARY 17, 2007.

FILING RECORD

RECORDED 5/28/2015 AT 12:09 PM BOOK 10 PAGE 130
DANA L. LUBIOS, CLERK OF LARAMIE COUNTY, WY PAGE 1 OF 1

JENNAE VILLAGE, 2ND FILING

ADMINISTRATIVE REPEAT OF

LOTS 1-9, JENNAE VILLAGE, CITY OF CHEYENNE, LARAMIE COUNTY, WYOMING

PREPARED MARCH 2015

