

COORDINATE DATA - GROUND DATUM
Cheyenne City Grid System

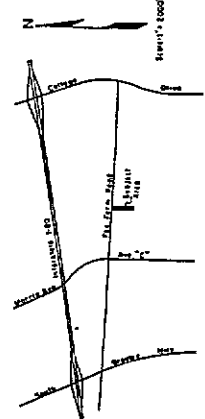
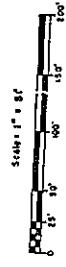
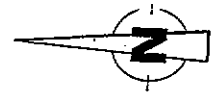
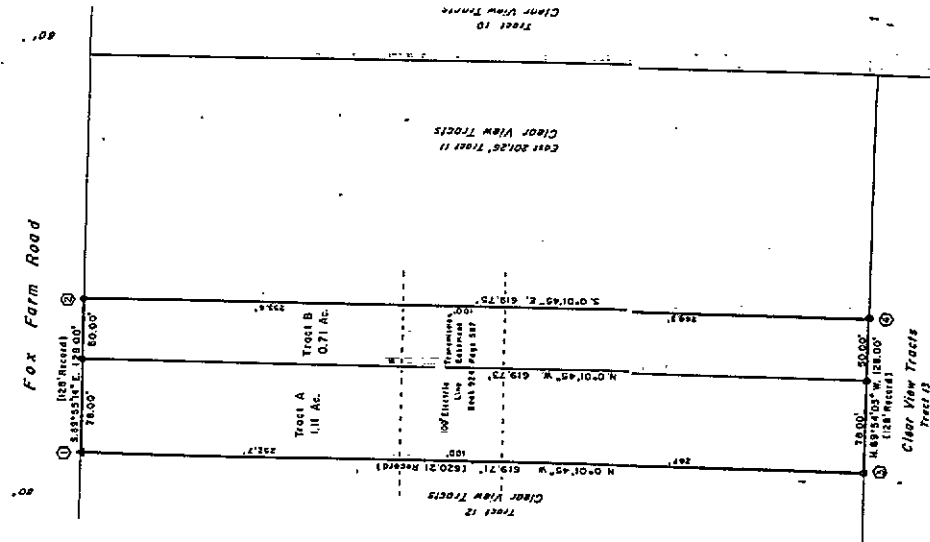
- ① 84136.78 N 605576.06 E
- ② 84136.60 N 605704.03 E
- ③ 83170.7 H 605376.38 E
- ④ 83516.85 N 605704.39 E

BEARING NOTE

Bearings are in reference to the Cheyenne City Grid System

MONUMENT LEGEND

- ▲ Found No. 6 Rebar
- Set No. 5 Rebar with Aluminum I.D. Cap



VICINITY MAP

CERTIFICATE OF SURVEYOR

State of Wyoming SS
County of Laramie

I, Edward C. Fry, a registered Professional Engineer and Land Surveyor, hereby certify that this Plat was prepared from notes taken during an actual survey made by me in August, 1983 and that to the best of my professional knowledge correctly represents the results of that survey as monumented on the ground and as indicated in the plat hereon.

Edward C. Fry
Edward C. Fry, R.E./L.S., No. 5662

D E D I C A T I O N

Know all men by these presents that Clarence A. Jolley and Joaquin E. Jolley, acting in the name of the land embraced by this plat, do hereby declare that the subdivision of said lands, as it appears on this Plat, is free and clear and in accordance with their desires.

Clarence A. Jolley
Clarence A. Jolley

Joaquin E. Jolley
Joaquin E. Jolley

A C K N O W L E D G E M E N T S

I, the undersigned, do hereby acknowledge the foregoing Dedication and the subdivision of said lands, as it appears on this Plat, and the same are hereby acknowledged by me.

Clarence A. Jolley
Clarence A. Jolley

The foregoing Dedication was signed and acknowledged before me by Clarence A. Jolley and Joaquin E. Jolley this 17th day of August, 1983.

Witness my hand and official seal

Richard J. [Signature]
Notary Public

A P P R O V A L S

Approved by the Cheyenne-Laramie County Regional Planning Commission this 17th day of September, 1983.

[Signature]
Secretary

[Signature]
Chairman

Approved by the City Council of the City of Cheyenne, Wyoming this 17th day of September, 1983.

[Signature]
City Clerk

Approved by the Board of County Commissioners of Laramie County, Wyoming this 17th day of September, 1983.

[Signature]
County Clerk

Approved by the Board of County Commissioners of Laramie County, Wyoming this 17th day of September, 1983.

[Signature]
Chairman of the Board



Final Plat
JOLLEY ACRES

West 128' of Tract II, Clear View Tracts located in the NE 1/4 NW 1/4 of Section 9, T. 13 N., R. 66 W of the 6th P.M. Laramie County, Wyoming

Platted August, 1983 by civil Engineer, Edmund C. Fry

314
315
316
317
318
319
320
321
322
323
324
325
326
327
328
329
330
331
332
333
334
335
336
337
338
339
340
341
342
343
344
345
346
347
348
349
350
351
352
353
354
355
356
357
358
359
360
361
362
363
364
365
366
367
368
369
370
371
372
373
374
375
376
377
378
379
380
381
382
383
384
385
386
387
388
389
390
391
392
393
394
395
396
397
398
399
400