

Filing Record

62-2045

This instrument was filed for record at 9:35 AM on the 23rd day of June, 1981, in the office of the County Clerk of Cheyenne, Wyoming.

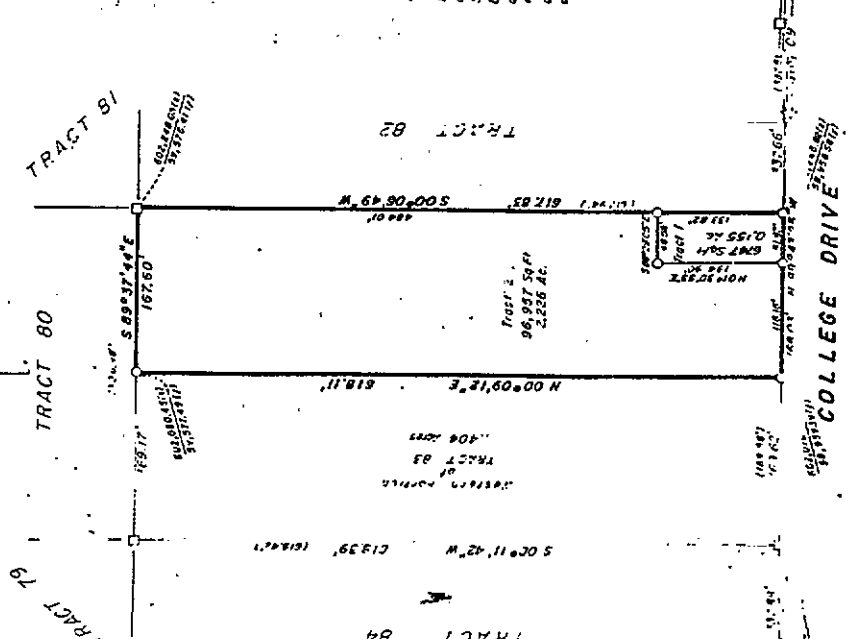
Janet C. Whitman
County Clerk

Surveyor's Certificate

I, Milton M. Hobby Jr., a land surveyor registered in the State of Wyoming, do hereby certify that this replat of a portion of Tract 83, Allison Tracts, Second Filing, a subdivision of Section 8, T13N, R66W, 6th PM., Laramie County, Wyoming, has been prepared from recorded documents and the field notes of a survey made by me on March 10, 1981, and that it correctly and accurately represents said survey of the tract as shown hereon. The land replatted are more particularly described below:

Beginning at the southeast corner of Tract 84, Allison Tracts, Second Filing, thence N 89°43'25" W along the north right-of-way of College Drive a distance of 168.03 feet to a point, thence N 00°09'12" E a distance of 616.17 feet to the north line of Tract 83, thence S 89°47'44" E along the north line of Tract 83 a distance of 167.60 feet to the northeast corner of Tract 83; thence S 00°06'49" W along the east line of Tract 83 a distance of 617.83 feet to the point of beginning, containing 2.381 acres, more or less.

Milton M. Hobby Jr.
Surveyor



Legend & Notes

- indicates distance B cap found
- indicates 1.5" square cap bolt found
- indicates City of Cheyenne datum control point
- indicates 1/2" x 3/8" rebar-welding cap set
- indicates used or plat record nail

Bearings are referenced to city datum as shown

MALICK & MURRAY, GARDENS

Dedication

KNOW ALL MEN BY THESE PRESENTS that Tsvetta G.H. Popoff, Carol Jo Popoff, John M. Lortimore and Maria V. Lortimore, owners in fee simple of the land embraced in this replat of a portion of Tract 83, Allison Tracts, Second Filing, as recorded in the office of the County Clerk and Ex. Official Register of Deeds, do hereby declare this re-subdivision of said land to be their free act and deed and in accordance with their desires.

Tsvetta G.H. Popoff
Tsvetta G.H. Popoff

Carol Jo Popoff
Carol Jo Popoff

John M. Lortimore
John M. Lortimore

Maria V. Lortimore
Maria V. Lortimore

Acknowledgement

State of Wyoming)
County of Laramie)

The foregoing dedication was acknowledged before me by Tsvetta G.H. Popoff, Carol Jo Popoff, John M. Lortimore and Maria V. Lortimore this 18th day of MAY, 1981.

Alfred J. ...
Notary Public

My Commission Expires ...

Approvals

Approved by the Cheyenne-Laramie County Regional Planning Commission on the 18th day of MAY, 1981.

Walter Ferguson III
Chairman

Oil ...
Secretary

Approved by the Board of County Commissioners of Laramie County this 7th day of June, 1981.

Janet C. Whitman
County Clerk

...
Chairman of the Board

Larimore Subdivision

a replat of
A Portion Of Tract 83, Allison Tracts, Second Filing,
a subdivision of Section 8, T13N, R66W, 6th PM.
LARAMIE COUNTY, WYOMING



ALPINE SURVEYING
PO Box 371
Cheyenne, Wyoming
832-0030

March 1981
Job No. 81036
Book 81/01/32