

DEDICATION

KNOW ALL PERSONS BY THESE PRESENTS THAT Laramie County Library Board of Directors (hereinafter "Directors") in the County of Cheyenne, State of Wyoming, do hereby dedicate to the public use of the Cheyenne-Laramie County Library Board of Directors, the same to be surveyed, opened, vacated, dedicated and recorded as follows: TO BE OPENED, VACATED, DEDICATED AND RECORDED AS SHOWN ON THIS MAP, TO BE THEIR ACT AND DEED AND IN ACCORDANCE WITH THE STATUTES OF THE STATE OF WYOMING, AND SO HEREBY GIVE THE NECESSARY AND PROPER CONSENT THEREFOR.

Laramie County Library Board of Directors
 Dale Anderson, Chair, Laramie County Library Board of Directors

ACKNOWLEDGEMENT

STATE OF WYOMING)
 COUNTY OF LARAMIE) SS

The foregoing instrument was acknowledged before me this 11th day of December, 2005, by Dale Anderson, Chair, Laramie County Library Board of Directors.

My Commission Expires: July 31, 2006

APPROVALS

Approved by the Cheyenne-Laramie County Regional Planning Commission the 31 day of December, 2005.

Randy D. ...
 Development Director
 Approved by the City Council of the City of Cheyenne on the 29 day of December, 2005.
Robert R. ...
 Mayor

NOTES

- 1) BASE OF ADJUTY - CITY OF CHEYENNE DATUM REFERENCED FROM CITY CORNER MONUMENTS "100" & "102" 2007.
- 2) THIS VACATION STATEMENT WAS PREPARED BY JOHN A. STEEL, REGISTERED PROFESSIONAL LAND SURVEYOR, P.C., 1102 WEST 19th STREET, P.O. BOX 5073, CHEYENNE, WY 82005 & DATED MARCH 2, 2006.

VACATION STATEMENT

IT IS THE INTENT OF THIS REPORT TO VACATE ALL STREETS, ALLEYS, LOT LINES AND LOTS SHOWN ON THIS MAP AND TO PROVIDE THE NECESSARY CONSENT THEREFOR.

LAND DESCRIPTION

ALL OF BLOCKS 206 AND 207 VACATED THOMES AVENUE LOCATED BETWEEN BLOCKS 204 AND 207, AND THE VACATED ALLEYS LOCATED WITHIN BLOCKS 206 AND 207 ORIGINAL CITY OF CHEYENNE, LARAMIE COUNTY, WYOMING.

CERTIFICATE OF SURVEYOR

I, John A. Steel, Registered Professional Land Surveyor in the State of Wyoming, do hereby certify that I have personally conducted a field survey conducted by me, or under my direct supervision during the preparation of this report, and that the same is a true and correct statement of the facts and conditions as shown on this map and that I am a duly licensed and registered surveyor of this State as indicated hereon to the best of my knowledge.

LCL SUBDIVISION

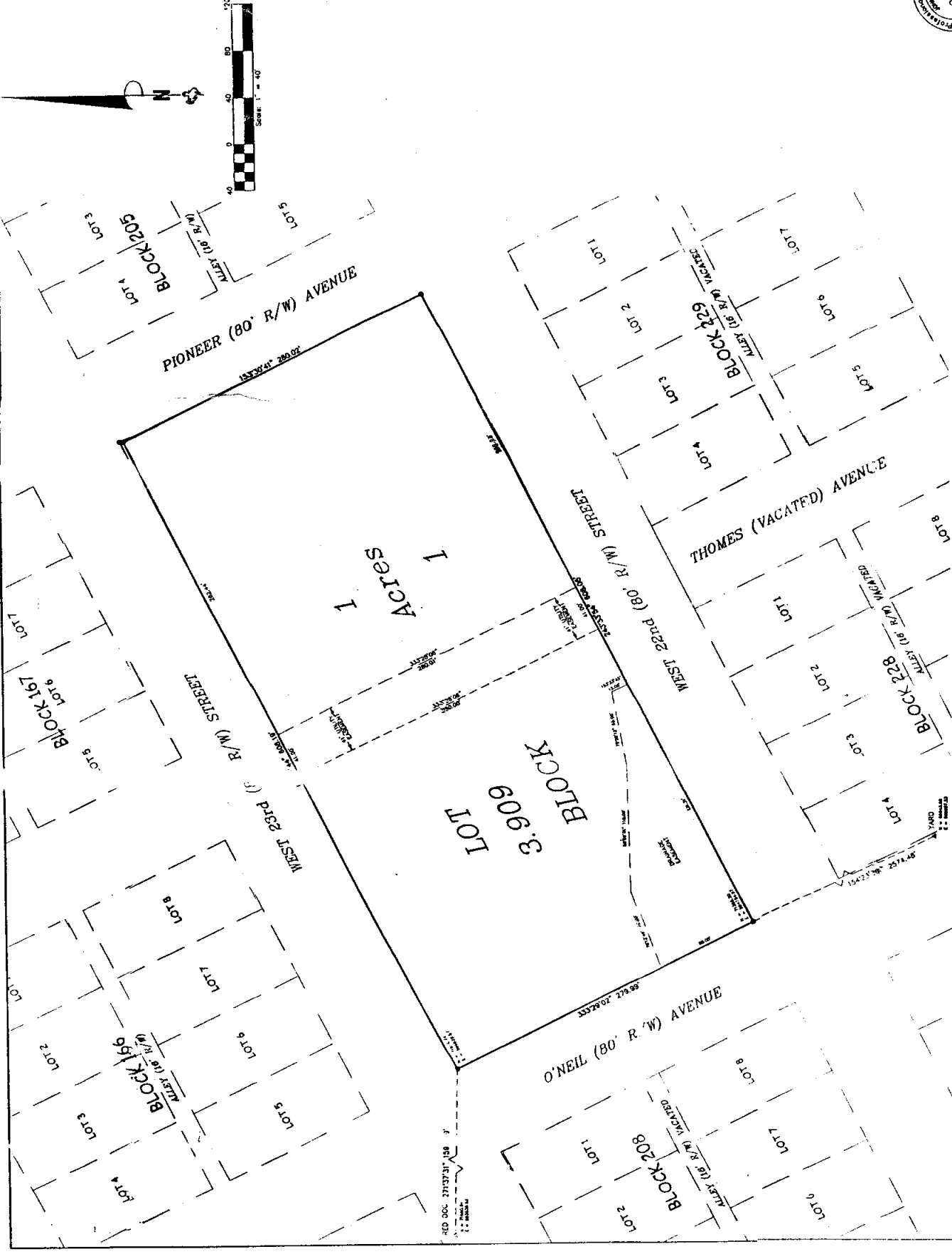
A REPLAT OF ALL OF BLOCKS 206 AND 207, THOMES AVENUE LOCATED BETWEEN BLOCKS 206 AND 207, AND THE ALLEYS LOCATED WITHIN BLOCKS 206 AND 207 ORIGINAL CITY, CITY OF CHEYENNE, LARAMIE COUNTY, WYOMING.

PREPARED OCTOBER, 2005

STEEL SURVEYING SERVICES, LLC
 PROFESSIONAL LAND SURVEYORS
 1102 WEST 19th STREET, P.O. BOX 5073
 CHEYENNE, WY 82005



Benchmark ENGINEERS P.C.



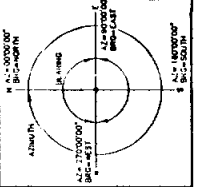
LEGEND

- 1/4" X 3/4" LONG REBAR WITH 1/8" ALUMINUM CAP STAMPED "MS PLS 2300"
- FOUND 2" ALUMINUM CAP STAMPED "PLS 2307"

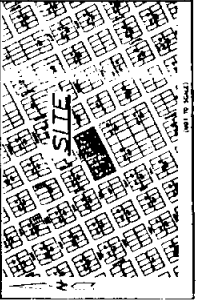
FILING RECORD

Instrument: 31672P
 The State of Wyoming) SS
 County of Laramie)
 This subdivision was filed for record on 10/25/05 at 10:00 AM.
 A.D. 2005 and duly recorded.
 P.C. 1102 and 5073
 JOHN A. STEEL
 Registered Professional Land Surveyor
 State of Wyoming
 No. 2567

AZIMUTH



VICINITY MAP



Handwritten number 2114

SUBDIVISION SETUP FORM

Subdivision Proper Name LCL SUBDIVISION

Received from BENCHMARK ENGINEERS

Grantor LARAMIE COUNTY LIBRARY BOARD OF DIRECTORS Document Date 12/21/2005

Grantee IN RE LCL SUBDIVISION

Legal Description BL206,207, VAC THOMES AVE, ALLEYS OC

SUBDIVISION INFORMATION

Short Alpha Name LCL SUBD Number 2980

Block Name BLOCK Lot Name LOT

Replats Previous Platting Y~~XX~~ Defunct Subdivision ~~XXN~~

Covenants Book/Page _____ Old Hard Copy Book/Number COMP

ABSTRACTING INFORMATION

For suffix 40-69 (Existing Parcels Affected)

TWN/SUBD	RNG/BLOCK	BEGIN SEC/LOT	END SEC/LOT	R/V SW
<u>500</u>	<u>206</u>	<u>1</u>	<u>8</u>	<u>R</u>
<u>500</u>	<u>207</u>	<u>1</u>	<u>8</u>	<u>R</u>

?

For suffix 70-99 (New Parcels Created)

BLOCK #	BEGIN LOT	END LOT	BLOCK #	BEGIN LOT	END LOT
<u>2980</u>	<u>1</u>	<u>1</u>			

020-045 (R12/01)