

CHYENNE DEVELOPMENT GROUP, LLC  
1735 S 19TH AVE STE B  
BOZEMAN, MT 59718

PROJECT: LINCOLN ADDITION THIRD FILING

PLANNED TITLE: FINAL PLAT



110 OLD TOWN LANE, SUITE 401  
CHEYENNE, WY 82001  
TEL: 307.634.2222  
WWW.DIENGINEERING.COM

DATE: 5/18/2015  
DRAWN BY: JTW  
CHECKED BY: ADJ  
JOB NO.: 2-3687.15  
DRAWING NO.: 1 OF 1

**LEGAL DESCRIPTION:**  
THE FOLLOWING IS A DESCRIPTION OF A PARCEL OF LAND CONSISTING OF LOT 1, BLOCK 1 OF LINCOLN ADDITION SECOND FILING BEING SITUATED IN A PORTION OF THE SOUTHWEST QUARTER (SW1/4) OF SECTION 11, TOWNSHIP 20 NORTH, RANGE 6 WEST OF THE SIXTH PRINCIPAL MERIDIAN, LARAMIE COUNTY, WYOMING, (HEREINAFTER REFERRED TO AS "PARCEL") DESCRIBED BY METES AND BOUNDS AS FOLLOWS:  
BEGINNING AT THE NORTH CORNER OF SAID LOT 1, THENCE ALONG THE NORTH LINE OF SAID LOT 1 TO THE NORTH LINE OF THE NORTHWEST QUARTER (NW1/4) OF SECTION 11, A DISTANCE OF 24.41 FEET; THENCE ALONG THE NORTH LINE OF THE NORTHWEST QUARTER (NW1/4) OF SECTION 11, A DISTANCE OF 24.41 FEET; THENCE ALONG THE WEST LINE OF THE NORTHWEST QUARTER (NW1/4) OF SECTION 11, A DISTANCE OF 24.41 FEET TO THE WEST LINE OF SAID LOT 1; THENCE ALONG THE WEST LINE OF SAID LOT 1, A DISTANCE OF 24.41 FEET TO THE POINT OF BEGINNING. SAID PARCEL OF LAND CONTAINS 2.71 ACRES MORE OR LESS.

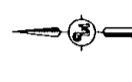
**DEDICATION:**  
NOW ALL MEN BY THESE PRESENTS, CHYENNE DEVELOPMENT GROUP, LLC, OWNER IN FULL AND SOLE OF THE LAND SHOWN IN THIS FINAL PLAT OF LINCOLN ADDITION THIRD FILING, DO HEREBY DECLARE THAT THE SUBDIVISION OF SAID LAND IS WITH THEIR FREELAND AND DEED AND TO BE GRANT THE EASEMENTS SHOWN HEREON FOR THE PURPOSES INDICATED ON THIS PLAT.

**ACKNOWLEDGEMENTS:**  
STATE OF WYOMING  
COUNTY OF LARAMIE  
I, John Paul Beaman, County Clerk, do hereby certify that the foregoing instrument was acknowledged before me by Chyenne Development Group, LLC this 10 day of May, 2015, witnesses my hand and official seal.

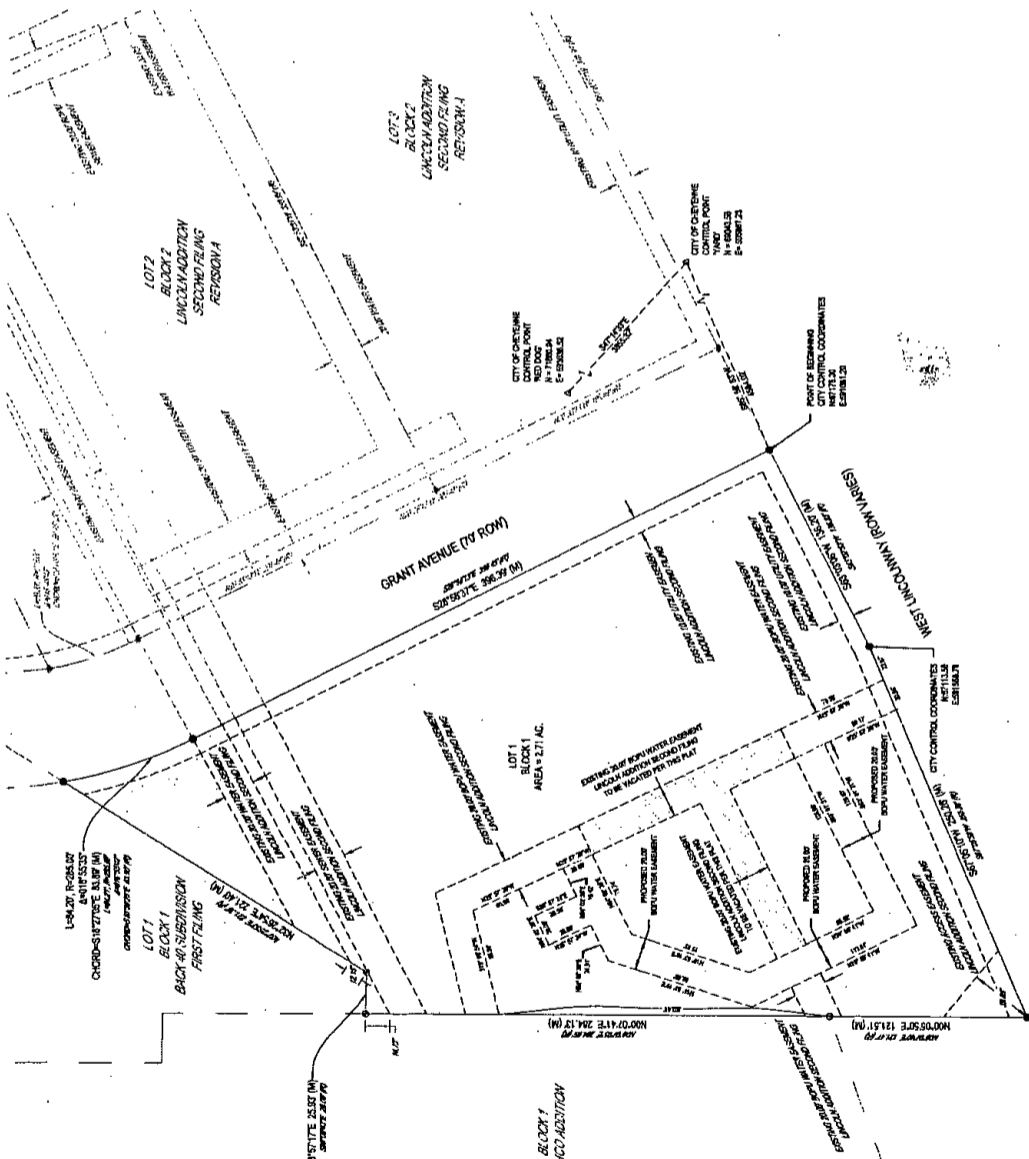
**NOTARY PUBLIC:** JACQUELINE WYOMING  
MY COMMISSION EXPIRES 11-11-16

**APPROVALS:**  
APPROVED BY THE PLANNING AND DEVELOPMENT DIRECTOR THIS 28 DAY OF May, 2015.  
DEVELOPMENT DIRECTOR  
APPROVED BY THE CITY OF CHEYENNE ENGINEER THIS 28 DAY OF May, 2015.  
CITY ENGINEER

**ACKNOWLEDGEMENTS:**  
STATE OF WYOMING  
COUNTY OF LARAMIE  
THE FOREGOING INSTRUMENT WAS ACKNOWLEDGED BEFORE ME THIS 20 DAY OF MAY, 2015, BY Chyenne Development Group, LLC AND Jacqueline, ON BEHALF OF THE CITY OF CHEYENNE, WYOMING.  
NOTARY PUBLIC: JACQUELINE WYOMING  
MY COMMISSION EXPIRES 12-23-15



**FINAL PLAT**  
**LINCOLN ADDITION**  
**THIRD FILING**  
AN ADMINISTRATIVE REPEAT OF LOT 1, BLOCK 1 OF LINCOLN ADDITION SECOND FILING, BEING SITUATED IN A PORTION OF THE SW1/4 OF THE NE1/4 OF SECTION 11, TOWNSHIP 20 NORTH, RANGE 6 WEST OF THE SIXTH PRINCIPAL MERIDIAN, LARAMIE COUNTY, CHEYENNE, WYOMING  
DATE OF PREPARATION: MAY 2015

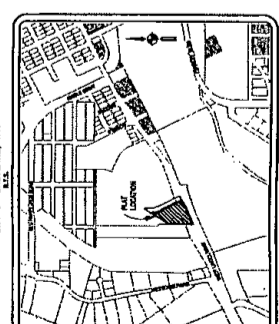


**LEGEND:**  
● POINTS ALUMINUM OR ALUMINUM  
● POINTS ALUMINUM OR ALUMINUM  
● POINTS ALUMINUM OR ALUMINUM  
● POINTS ALUMINUM OR ALUMINUM  
● POINTS ALUMINUM OR ALUMINUM

**NOTES:**  
REFERENCE TO RECORD DATE:  
1- LINCOLN ADDITION SECOND FILING

**LEGEND:**  
● POINTS ALUMINUM OR ALUMINUM  
● POINTS ALUMINUM OR ALUMINUM  
● POINTS ALUMINUM OR ALUMINUM  
● POINTS ALUMINUM OR ALUMINUM  
● POINTS ALUMINUM OR ALUMINUM

**LEGEND:**  
● POINTS ALUMINUM OR ALUMINUM  
● POINTS ALUMINUM OR ALUMINUM  
● POINTS ALUMINUM OR ALUMINUM  
● POINTS ALUMINUM OR ALUMINUM  
● POINTS ALUMINUM OR ALUMINUM



**FILING RECORD:**  
RECORDED AT 11:01 A.M. ON MAY 18, 2015  
BY: CLERK OF DISTRICT COURT, 17th FLOOR, 100 N. PLACER, CHEYENNE, WY. 82001



**CERTIFICATE OF SURVEYOR:**  
I, ADAM E. DESAUTELS, A PROFESSIONAL LAND SURVEYOR REGISTERED IN THE STATE OF WYOMING, DO HEREBY CERTIFY THAT THE FOREGOING INSTRUMENT WAS PREPARED BY ME OR UNDER MY DIRECT SUPERVISION AND THAT ALL INFORMATION CONTAINED THEREIN IS CORRECT TO THE BEST OF MY KNOWLEDGE AND BELIEF.

**VACATION STATEMENT:**  
THE PLAT WASTES ANY AND ALL VACANT LINES AS NOTED TO BE LOCATED WITHIN THE BOUNDS OF THE PLAT.

**BASIS OF BEARINGS:**  
BASIS OF BEARINGS: GRID BEARINGS AS ESTABLISHED BY GPS (GLOBAL POSITIONING SYSTEM) OBSERVATIONS REFERENCED FROM CITY OF CHEYENNE CONTROL MONUMENT "RED DOT" AND "HUB".

**NOTES:**  
1- LINCOLN ADDITION SECOND FILING