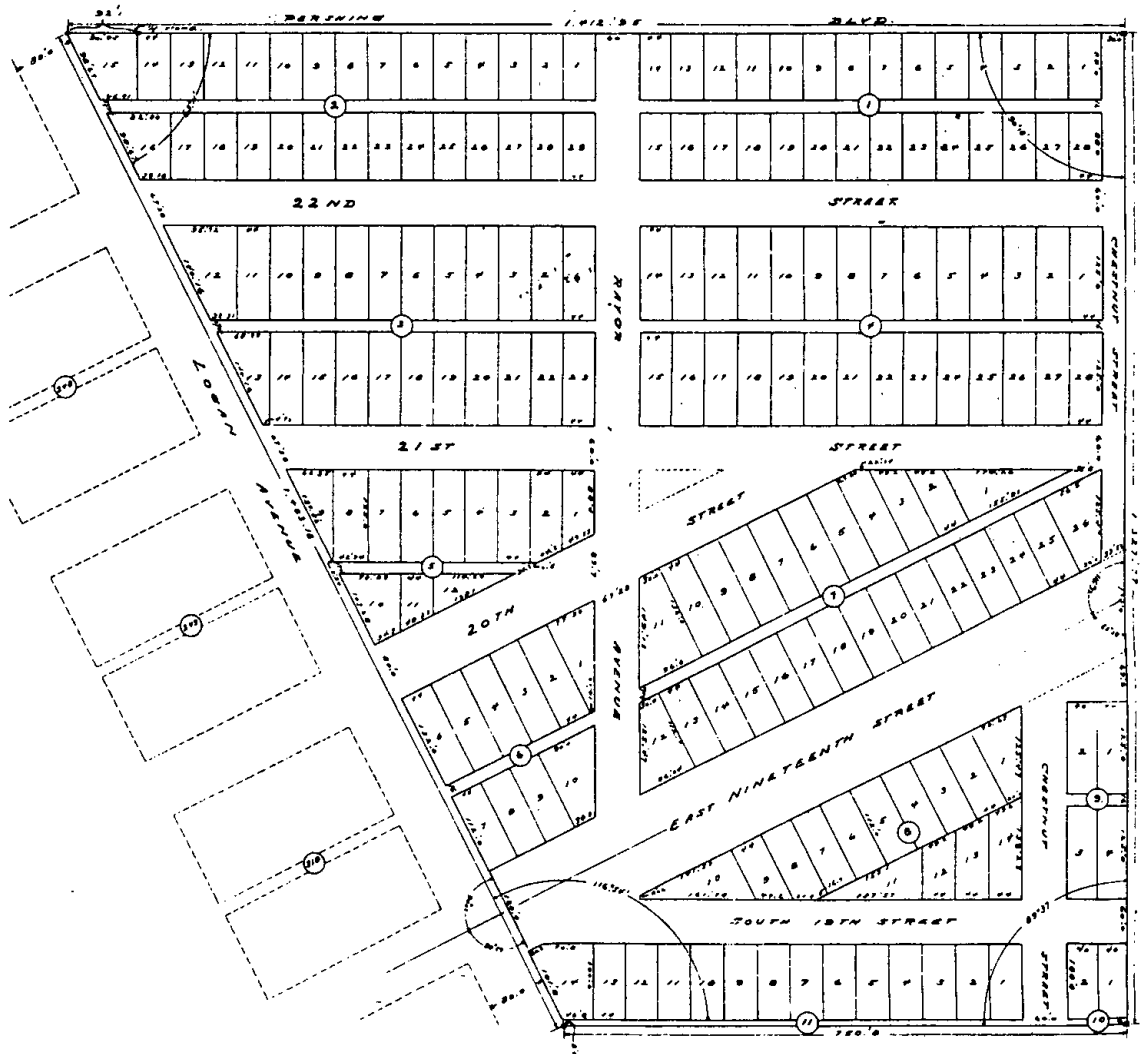


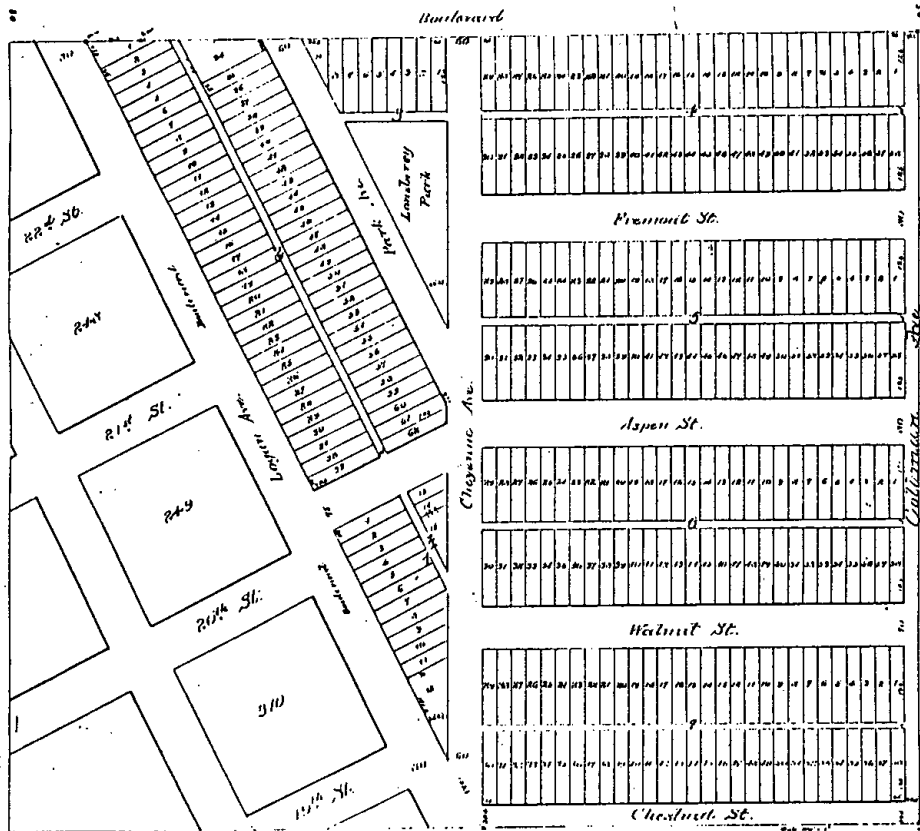


REPLAT  
OF  
LOGAN HEIGHTS ADDITION  
TO THE  
CITY OF GHEYENNE  
LARAMIE COUNTY  
WYOMING  
SCALE 1"=100'



# LOCAN HEIGHTS ADDITION

TO CHEYENNE.



We the undersigned owners and proprietors of Lot 116 One (1) in Sec. 32 T14 R66 E of 6th Principal Meridian, Do hereby ratify and confirm the laying out of said land as Locan Heights Addition to Cheyenne, as shown on the foregoing Plat, and do hereby Dedicate to Public use the Streets and Alleys, as shown on said Plat.

Witness our Hands this 19 day of June A.D. 1890  
*Witness Signatures*  
*Sand Attention*

*George C. Johnson*  
*Owner of Lot 116*

County of Wyoming }  
 County of Laramie }

On this 19 day of June A.D. 1890 personally appeared before me, George C. Johnson, not Publican, personally known to me the identical persons who signed the foregoing dedication and acknowledged that they signed the same freely and voluntarily for the uses therein set forth.

Witness my hand and seal this 19 day of June A.D. 1890.  
*George C. Johnson*  
 County Clerk

1890  
 This instrument  
 was recorded  
 June 20th 1890  
 at Cheyenne Wyo  
 in Book L-69  
 page 168  
*Geo. C. Johnson*  
 County Clerk