

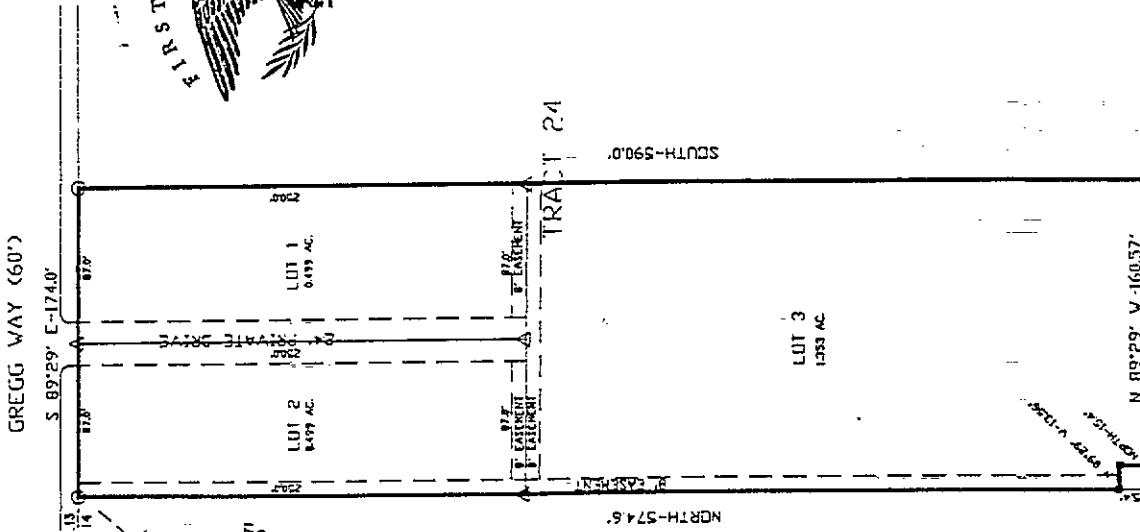
SURVEY DONE FOR LSE 1930  
 BY RICHARD W. MAILMAN  
 3000 N. DEL RANGE BLVD  
 CHEYENNE, WYOMING 82009  
 637-8582

CERTIFICATE OF SURVEY

STATE OF WYOMING  
 COUNTY OF LARAMIE

I, Donald M. Hopkins, a Professional Engineer and Land Surveyor, registered in the State of Wyoming, hereby certify that this plat was made from notes of a survey made under my direction and completed on the 15th day of April, 1994, and that said survey is accurately represented on this plat as staked in the field.

WYOMING REGISTRATION NO. 558



LAND DESCRIPTION

A portion of the west 174 feet of Tract 24, 1st Range Addition, Second Filing, Laramie County, Wyoming, described as follows:  
 Beginning at a point N 82°13'12" W a distance of 475.76 feet from the S 1/4 Corner of Section 22, T. 14 N., R. 66 W., 6th P.M., Thence N. 89°29' W a distance of 160.57 feet, Thence North a distance of 15.4 feet, Thence N 89°29' W a distance of 574.6 feet, to the northwest corner of Tract 24, Thence S 89°29' E a distance of 174.0 feet, Thence South a distance of 590 feet, to the point of beginning. Said portion containing 2.352 acres, more or less, and subject to any existing easements, rights of way, or other restrictions of record.

APPROVED BY THE LARAMIE COUNTY COMMISSIONERS  
 ON THIS 31st DAY OF October 1995.

*Mike Nichols*  
 CHAIRMAN

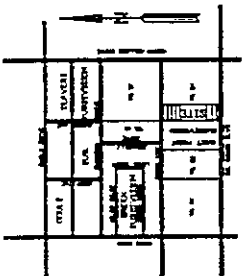
Map No. 17275  
 The State of Wyoming  
 County of Laramie  
 This instrument was filed for record  
 on 12/21/95 at 11:14 A.M. in the  
 City of Cheyenne, Wyoming.  
 A.C. 11 95  
 Book 66 Page 175  
 P.C. 66 175

*Alma K. ...*  
 Clerk of the County of Laramie

LEGEND  
 [ ] FOUND POINTS  
 [ ] 1/2" REBAR & CAP  
 [ ] 1" IRON PIPE  
 [ ] 5/8" REBAR & SURVEY CAP

BASIS OF BEARING-PLAT OF DEL RANGE ADDITION, 2ND FILING.

Hopkins & Associates  
 3313 Birch Place  
 Cheyenne, Wyoming  
 632-4763



AREA MAP  
 SCALE 1" = 1000'

DEDICATION

Know all men by these presents that the undersigned owners in fee simple of the land embraced in this plat do hereby declare that the Subdivision of the described land is with their free consent and knowledge, and in accordance with their desires

H. R. G. PARTNERSHIP, A WYOMING PARTNERSHIP  
*Richard W. Mailman*  
 RICHARD W. MAILMAN PARTNER

ACKNOWLEDGEMENT

STATE OF WYOMING  
 COUNTY OF WYOMING  
 The foregoing declaration was acknowledged before me by the above signed persons who affirm they are the owners of the above described land, and that the execution of said declaration was their own free act and deed and in accordance with their desires.

Dated this 2nd day of November 1995.  
*Chessa Barrow*  
 Notary Public Reg. 41995  
 My Commission expires

APPROVALS

APPROVED BY THE CHEYENNE-LARAMIE COUNTY PLANNING COMMISSION  
 ON THIS 29th DAY OF September 1995.

*Michael ...*  
 DEVELOPMENT DIRECTOR

APPROVED BY THE CITY COUNCIL OF CHEYENNE, WYOMING,  
 ON THIS 29th DAY OF September 1995.

*Michael ...*  
 Mayor

FILING RECORD

INDEXED  
 FILED  
 1995 SEP 29 10 00 AM  
 COUNTY CLERK  
 CHEYENNE, WYOMING

FINAL PLAT  
 MAHLMAN SUBDIVISION  
 A REPLAT OF  
 A PORTION OF  
 THE WEST 174 FEET OF TRACT 24  
 DEL RANGE ADDITION SECOND FILING  
 SECTION 22, T. 14 N., R. 66 W., 6TH P.M.  
 LARAMIE COUNTY, WYOMING

SCALE 1" = 50'  
 SEPTEMBER 9, 1994