

DEDICATION

BEFORE ALL PERSONS BY THESE PRESENTS BIDS Community First National Bank, being the agent of a portion of the Southwest Quarter (SW^{1/4}) of Section 34, Township 14 North, Range 66 West of the 6th P.M., City of Cheyenne, Laramie County, Wyoming, more particularly described as follows:

Community First National Bank, a corporation organized under the laws of the State of Wyoming, and duly qualified to do business in the State of Wyoming, and being the agent of a portion of the Southwest Quarter (SW^{1/4}) of Section 34, Township 14 North, Range 66 West of the 6th P.M., City of Cheyenne, Laramie County, Wyoming, more particularly described as follows:

Community First National Bank, a corporation organized under the laws of the State of Wyoming, and duly qualified to do business in the State of Wyoming, and being the agent of a portion of the Southwest Quarter (SW^{1/4}) of Section 34, Township 14 North, Range 66 West of the 6th P.M., City of Cheyenne, Laramie County, Wyoming, more particularly described as follows:

has caused the same to be prepared, plotted and taken as McCANN ADDITION THIRD FILING, since thereby setting the addition of said land as if owners on this date to be their free act and deed, and is executing with said address, and do hereby grant the easements for the purposes included herein.

Community First National Bank

[Signature]
 Frank V. Bell, Senior Vice President

ACKNOWLEDGEMENT

STATE OF WYOMING }
 COUNTY OF LARAMIE } SS

The signatures hereon were acknowledged before me this 23rd day of February, 1998, at Cheyenne, Wyoming, by Frank V. Bell, Senior Vice President of Community First National Bank.

[Signature]
 Notary Public, Laramie County, Wyoming
 My Commission Expires 08/31/2003

APPROVALS

Approved by the Cheyenne-Laramie County Register Planning Commission this 23rd day of February, 1998.

[Signature]
 Development Director

Approved by the City Council of the City of Cheyenne, Wyoming this 23rd day of February, 1998.

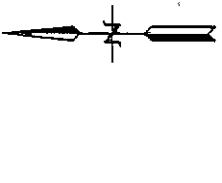
[Signature]
 City Clerk

**MCCANN ADDITION
 THIRD FILING**

A SUBDIVISION OF A PORTION OF THE SW^{1/4} OF SECTION 34, T. 14 N., R. 66 W., OF THE 6TH P.M., CITY OF CHEYENNE, LARAMIE COUNTY, WYOMING.

PREPARED FEBRUARY, 1998

STEEL SURVEYING SERVICES, LLC
 PROFESSIONAL LAND SURVEYORS



NOTES

- 1. CONFORMS TO RECORD PLAT 50591-50595
- 2. CONFORMS TO RECORD PLAT 50596-50600
- 3. CONFORMS TO RECORD PLAT 50601-50605
- 4. CONFORMS TO RECORD PLAT 50606-50610
- 5. CONFORMS TO RECORD PLAT 50611-50615
- 6. CONFORMS TO RECORD PLAT 50616-50620

LEGEND

- 1. ROAD RIGHT-OF-WAY SHOWN
- 2. CITY OF CHEYENNE RIGHT-OF-WAY SHOWN
- 3. CITY OF CHEYENNE RIGHT-OF-WAY SHOWN
- 4. CITY OF CHEYENNE RIGHT-OF-WAY SHOWN
- 5. CITY OF CHEYENNE RIGHT-OF-WAY SHOWN
- 6. CITY OF CHEYENNE RIGHT-OF-WAY SHOWN
- 7. CITY OF CHEYENNE RIGHT-OF-WAY SHOWN
- 8. CITY OF CHEYENNE RIGHT-OF-WAY SHOWN
- 9. CITY OF CHEYENNE RIGHT-OF-WAY SHOWN
- 10. CITY OF CHEYENNE RIGHT-OF-WAY SHOWN

LINE DATA TABLE

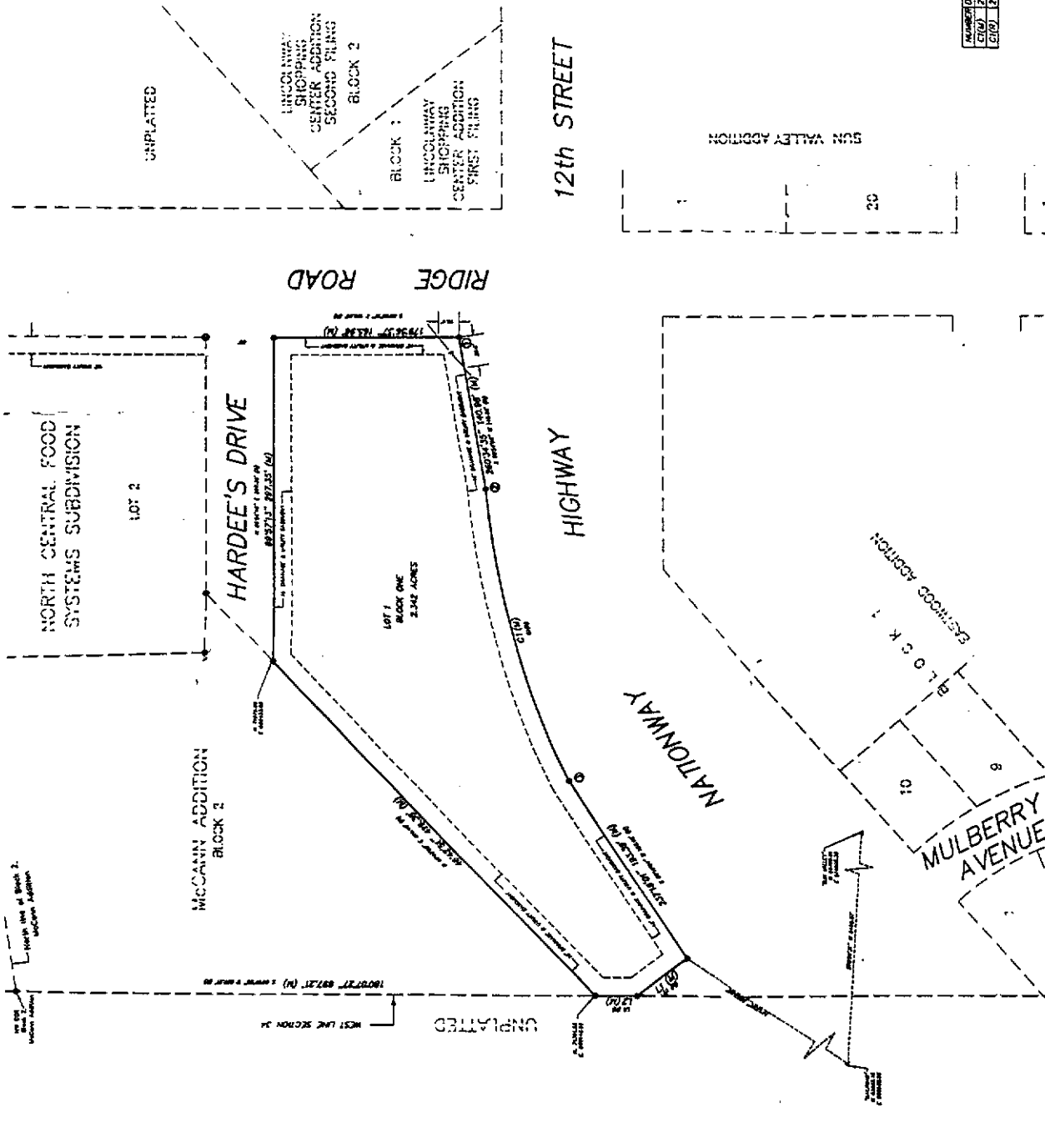
NUMBER	DIRECTION	DISTANCE
1100	S 75° 18' 53" W	55.34'
1101	N 77° 47' 47" W	55.37'
1200	S 89° 02' 37" E	37.01'
1201	N 00° 02' 37" E	37.01'

CURVE DATA TABLE

CURVE NO.	DIRECTION	RADIUS	ARC LENGTH	CHORD LENGTH
1	S 75° 18' 53" W	744.07	379.19	377.55
2	S 89° 02' 37" E	744.07	379.19	377.55

CERTIFICATE OF SURVEYOR

I, John A. Steel, Registered Professional Land Surveyor, in the State of Wyoming, hereby certify that this plat of MCCANN ADDITION THIRD FILING, was prepared from official plats and records of record and is a true and correct representation of the same as the same are on file in the office of the Surveyor General of Wyoming. Witness my hand and the seal of my office on the 23rd day of February, 1998, at Cheyenne, Wyoming.



FLUOR RECORD
 Revision 2/26/03
 The State of Wyoming }
 County of Laramie }
 at 3:00 P.M. on the 23rd day of February, 1998, I, John A. Steel, Surveyor General of Wyoming, do hereby certify that this plat of MCCANN ADDITION THIRD FILING is a true and correct representation of the same as the same are on file in the office of the Surveyor General of Wyoming.

AZIMUTH
 110° 07' 48" (N)

MCCANN MAP
 110° 07' 48" (N)

SCALE
 1" = 50'

SITE
 110° 07' 48" (N)