

**NO PROPOSED DOMESTIC WATER SOURCE
NO PROPOSED PUBLIC SEWAGE DISPOSAL SYSTEM
NO PROPOSED PUBLIC MAINTENANCE OF INTERIOR ROADS
FIRE PROTECTION TO BE PROVIDED BY FIRE DISTRICT #6**

PLANNING RECORD

Resolution: 3371241
The State of Wyoming }
County of Laramie } 25
This instrument was filed for record }
on 11/16/2004 at 10:42 AM }
by J. J. [Signature] }
J. J. [Signature] }
J. J. [Signature] }

County Clerk is to certify that this instrument is a true and correct copy of the original as recorded in the County Clerk's Office.

MUNICIPALITY MAP

TRACT 3
SUNFLOWER RANCH
RECORD OF SURVEY
UNPLATTED

TRACT 4
SUNFLOWER RANCH
RECORD OF SURVEY
UNPLATTED

TRACT 5
SUNFLOWER RANCH
RECORD OF SURVEY
UNPLATTED

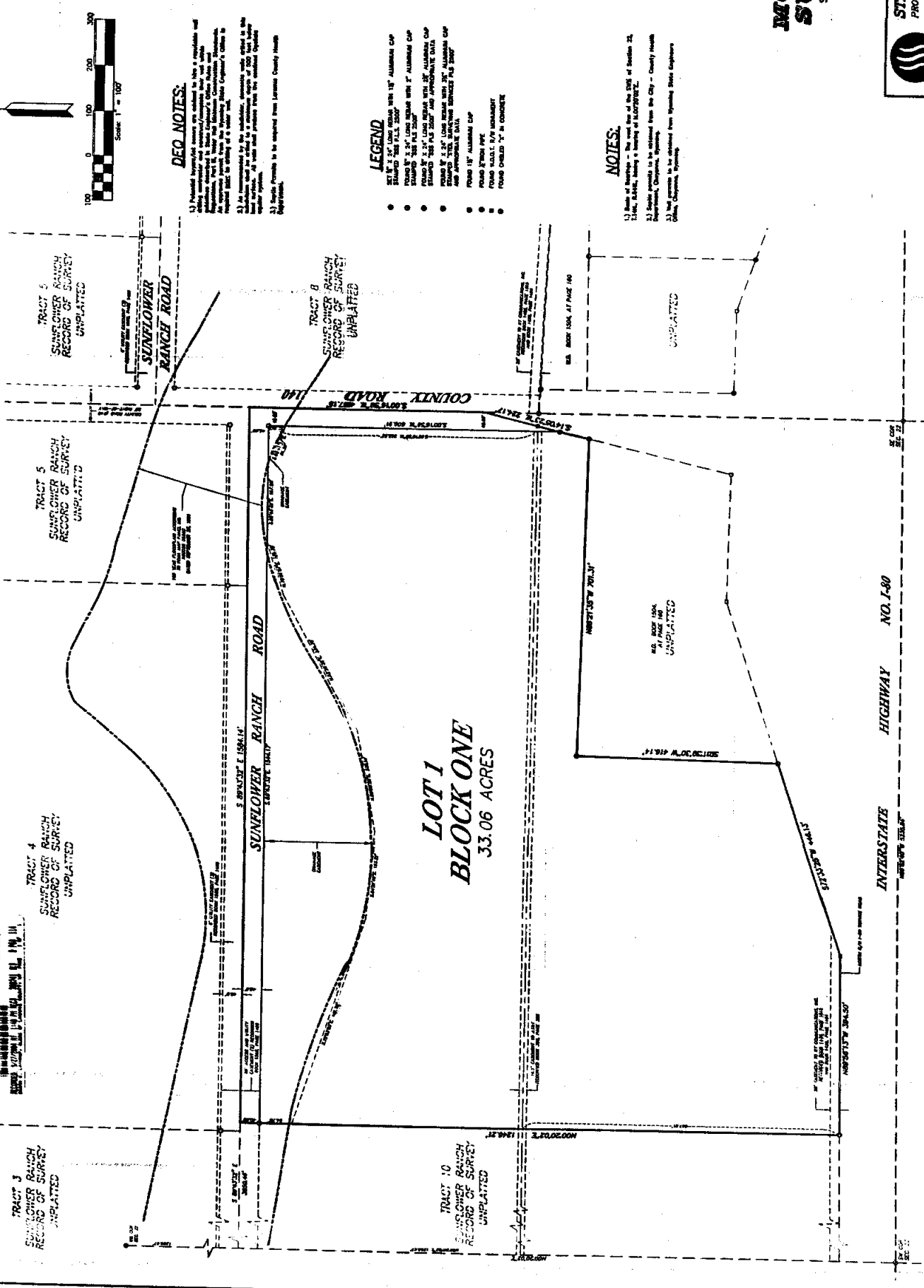
TRACT 6
SUNFLOWER RANCH
RECORD OF SURVEY
UNPLATTED

TRACT 7
SUNFLOWER RANCH
RECORD OF SURVEY
UNPLATTED

TRACT 8
SUNFLOWER RANCH
RECORD OF SURVEY
UNPLATTED

TRACT 9
SUNFLOWER RANCH
RECORD OF SURVEY
UNPLATTED

TRACT 10
SUNFLOWER RANCH
RECORD OF SURVEY
UNPLATTED



DEED NOTES:

- 1) Proposed instrument is subject to the provisions of the Wyoming Uniform Gifts to Minors Act (WUGMA) and the Wyoming Uniform Gifts to Minors Act (WUGMA) as amended.
- 2) An instrument is to be recorded in the County Clerk's Office. An instrument is to be recorded in the County Clerk's Office. An instrument is to be recorded in the County Clerk's Office.
- 3) An instrument is to be recorded in the County Clerk's Office. An instrument is to be recorded in the County Clerk's Office. An instrument is to be recorded in the County Clerk's Office.
- 4) An instrument is to be recorded in the County Clerk's Office. An instrument is to be recorded in the County Clerk's Office. An instrument is to be recorded in the County Clerk's Office.

LEGEND

- SET 1/2" x 1/2" LONG IRON WITH 1/2" ALUMINUM CAP STAMPED "SLS 1111 2007"
- FOUND 1/2" x 1/2" LONG IRON WITH 1/2" ALUMINUM CAP STAMPED "SLS 1111 2007"
- FOUND 1/2" x 1/2" LONG IRON WITH 1/2" ALUMINUM CAP STAMPED "SLS 1111 2007" AND APPROXIMATE DATA AND APPROXIMATE DATA
- FOUND 1/2" x 1/2" LONG IRON WITH 1/2" ALUMINUM CAP AND APPROXIMATE DATA
- FOUND 1/2" x 1/2" ALUMINUM CAP
- FOUND 1/2" x 1/2" IRON PIPE
- FOUND 1/2" x 1/2" IRON ROD
- FOUND 1/2" x 1/2" IRON ROD

NOTES:

- 1) State of Wyoming - The west line of the SW 1/4 of Section 25, T14N, R64W, being a bearing of N070°15'00" W, 100.00 feet.
- 2) State records to be obtained from the City - County Health Department, Cheyenne, Wyoming.
- 3) Not Applicable.

DEDICATION

ALL RIGHTS IN THESE RECORDS HAS, S. B. J. L. Co. Construction, L.L.C., a Wyoming Limited Liability Company, owner in fee of a portion of the Sunflower Ranch, Laramie, Wyoming, County of Laramie, State of Wyoming, and the same is being dedicated to the public use of the State of Wyoming, County of Laramie, Wyoming, for the purpose of providing a public use of the same.

The dedication is being made by the owner in fee of the Sunflower Ranch, Laramie, Wyoming, County of Laramie, State of Wyoming, and the same is being dedicated to the public use of the State of Wyoming, County of Laramie, Wyoming, for the purpose of providing a public use of the same.

The dedication is being made by the owner in fee of the Sunflower Ranch, Laramie, Wyoming, County of Laramie, State of Wyoming, and the same is being dedicated to the public use of the State of Wyoming, County of Laramie, Wyoming, for the purpose of providing a public use of the same.

The dedication is being made by the owner in fee of the Sunflower Ranch, Laramie, Wyoming, County of Laramie, State of Wyoming, and the same is being dedicated to the public use of the State of Wyoming, County of Laramie, Wyoming, for the purpose of providing a public use of the same.

ACKNOWLEDGMENTS

STATE OF WYOMING }
COUNTY OF LARAMIE }
I, the undersigned, being duly qualified under the laws of the State of Wyoming, do hereby certify that the foregoing is a true and correct copy of the original as recorded in the County Clerk's Office.

By _____
County Clerk

APPROVALS

Approved by the Cheyenne-Laramie County Regional Planning Commission on 11/16/2004 at 10:42 AM.

By [Signature]
Commissioner

Approved by the Board of County Commissioners of Laramie County on 11/16/2004 at 10:42 AM.

By [Signature]
County Clerk

CERTIFICATE OF SURVEYOR

I, the undersigned, being duly qualified under the laws of the State of Wyoming, do hereby certify that the foregoing is a true and correct copy of the original as recorded in the County Clerk's Office.

By [Signature]
Surveyor

**MOOSE FLATS
SUBDIVISION**

SITUATED IN A PORTION OF THE
SW 1/4 OF SECTION 22, T14N,
R64W, OF THE 6TH P.M.,
LARAMIE COUNTY, WYOMING.

PREPARED MAY, 2004

STEEL SURVEYING SERVICES, LLC

PROFESSIONAL LAND SURVEYORS

100 WEST 19th STREET, P.O. BOX 2073
FARMINGTON, WYOMING 82401

SUBDIVISION SETUP FORM

Subdivision Proper Name MOOSE FLATS SUBDIVISION

Received from S & J LOG CONSTRUCTION LLC

Grantor S & J LOG CONSTRUCTION LLC Document Date 07/20/2004

Grantee IN RE MOOSE FLATS SUBDIVISION

Legal Description M&B PTN S2 SEC22 T14N R64W

SUBDIVISION INFORMATION

Short Alpha Name MOOSE FLATS SUBD Number 2916

Block Name BLOCK Lot Name LOT

Replats Previous Platting Y/N Defunct Subdivision Y/N

Covenants Book/Page _____ Old Hard Copy Book/Number COMP

ABSTRACTING INFORMATION

For suffix 40-69 (Existing Parcels Affected)

TWN/SUBD	RNG/BLOCK	BEGIN SEC/LOT	END SEC/LOT	R/V SW
<u>14</u>	<u>64</u>	<u>22</u>		

For suffix 70-99 (New Parcels Created)

BLOCK #	BEGIN LOT	END LOT	BLOCK #	BEGIN LOT	END LOT
2916 <u>1</u>	<u>1</u>				