



ENGINEERS CERTIFICATE

Plan of Proposed
County of DeWitt

1. The City of DeWitt, Michigan, is pleased to announce the filing of a plat of a subdivision of land within the City of DeWitt, Michigan, as shown on the plat herewith, which plat has been approved by the Board of City Commissioners and the City Engineer, and the plat has been filed in the office of the County Clerk, DeWitt County, Michigan, in accordance with the provisions of the laws of the State of Michigan, and the City Engineer, DeWitt County, Michigan, is hereby certifying that the said plat has been approved by the Board of City Commissioners and the City Engineer, and the plat has been filed in the office of the County Clerk, DeWitt County, Michigan, in accordance with the provisions of the laws of the State of Michigan, and the City Engineer, DeWitt County, Michigan, is hereby certifying that the said plat has been approved by the Board of City Commissioners and the City Engineer, and the plat has been filed in the office of the County Clerk, DeWitt County, Michigan, in accordance with the provisions of the laws of the State of Michigan.

E. Philip Kelley
City Engineer

DEDICATION

Now do hereby certify that the City of DeWitt, Michigan, is pleased to announce the filing of a plat of a subdivision of land within the City of DeWitt, Michigan, as shown on the plat herewith, which plat has been approved by the Board of City Commissioners and the City Engineer, and the plat has been filed in the office of the County Clerk, DeWitt County, Michigan, in accordance with the provisions of the laws of the State of Michigan, and the City Engineer, DeWitt County, Michigan, is hereby certifying that the said plat has been approved by the Board of City Commissioners and the City Engineer, and the plat has been filed in the office of the County Clerk, DeWitt County, Michigan, in accordance with the provisions of the laws of the State of Michigan.

E. Philip Kelley
City Engineer

ACKNOWLEDGEMENT

I, the undersigned, Clerk of the Court of DeWitt County, Michigan, do hereby certify that the within plat has been filed in the office of the County Clerk, DeWitt County, Michigan, in accordance with the provisions of the laws of the State of Michigan, and the City Engineer, DeWitt County, Michigan, is hereby certifying that the said plat has been approved by the Board of City Commissioners and the City Engineer, and the plat has been filed in the office of the County Clerk, DeWitt County, Michigan, in accordance with the provisions of the laws of the State of Michigan.

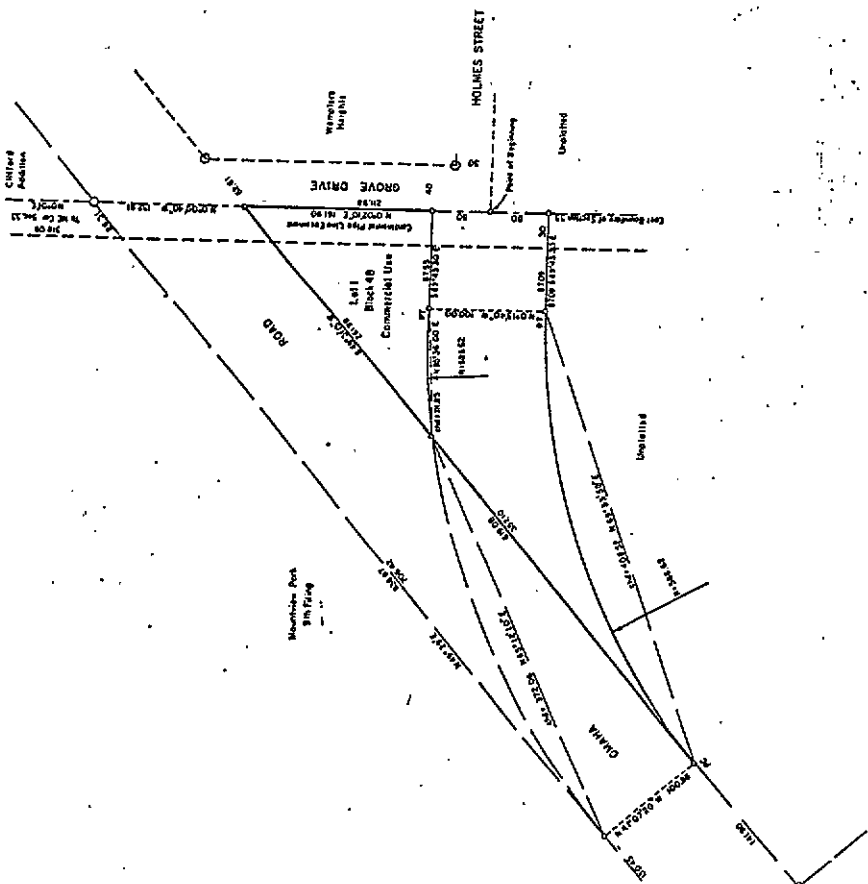
E. Philip Kelley
Clerk of Court

**MOUNTVIEW PARK
10TH FILING**

A SUBDIVISION OF PART
OF THE NE 1/4, SEC 31,
T-4N, R-6E-W, 6th Dist
LOUISIANA COUNTY, WISCONSIN

PLAT NO. 100

E. P. KELLEY & ASSOCIATES
ENGINEERS
PHONE 301-637-2318



LEGEND
O Low Pier Road
D Right-of-Way



200673



APPROVALS
Approved by the City Commission of the City of DeWitt, Michigan, on this 10th day of December, 1970.
City Clerk
Approved by the Board of City Commissioners of DeWitt County, Michigan, on this 10th day of December, 1970.
City Engineer

R-261