

ENGINEERS CERTIFICATE

The State of Wyoming
County of Laramie

I, the undersigned Engineer, do hereby certify that the map of Mountain Park, 7th Filing, a subdivision of Section 33, T.14N., R.66W., Laramie County, Wyoming, was made from a true and correct plan of record and that said map accurately represents the lots and streets contained on the map and that said map complies with all requirements of the Wyoming Statutes relating to subdivisions of land.

E. Riley Kelley
Engineer
Wyoming Ave. 823

DEDICATION

These streets, to wit: Olive Drive and Pine Drive, are the property of Grier Leech, Inc., a Wyoming Corporation, created in its own right, the deed of which is recorded in the office of the Clerk of the County of Laramie, Wyoming, and the said streets are hereby dedicated to the use of the Public hereof and in accordance with the provisions of said Statute.

Witness my hand and official seal this 12th day of August 1968.
Edward F. Grist
Secretary

ACKNOWLEDGEMENT

The State of Wyoming
County of Laramie

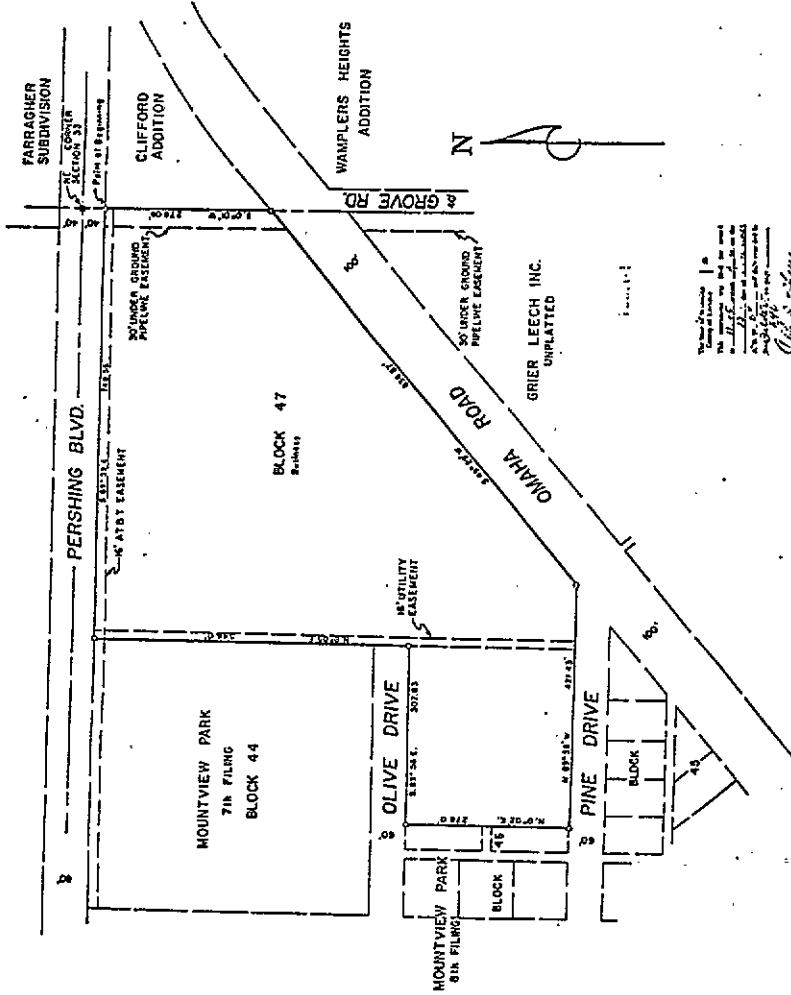
The foregoing instrument was acknowledged before me as the Notary Public for the County of Laramie, Wyoming, on this 12th day of August 1968, by Edward F. Grist, Secretary of Grier Leech, Inc., a Wyoming Corporation, and I have duly certified the same.



**MOUNTVIEW PARK
9TH FILING**

A SUBDIVISION OF PART
OF THE NE 1/4, SEC. 33,
T.14N., R. 66W., 6th P.M.,
LARAMIE COUNTY, WYOMING
Scale 1" = 100' DEC. 12, 1968

E. R. KELLEY & ASSOCIATES
213 WEST 20th STREET
CHEYENNE, WYOMING 82001
PHONE 337-4315-4319



APPROVALS

Approved by the Board of Commissioners, City of Cheyenne, Wyo. on this 11th day of August 1968.
[Signature]
Secretary

Approved by the Board of Surveyors, Commissioners of the State of Wyoming, on this 12th day of August 1968.
[Signature]
Chairman of the Board

