

REVISION PLAN SETUP FORM

Substation Project Name: 000001 KILA, STATION 170 KILOM
Revised from: 0000 000000
Created: 00 00 000000 by: 00000000 Document Date: 000000
Created: 00 000001 KILA, ST. 000
Legal Description: 000001 KILA, ST. 000

REVISION INFORMATION
Short Alpha Name: 000001 KILA, ST. 000
Block Name: _____ Lot Name: _____
Region Province Planning: 000 District Substation: 000
Comments Book/Part: _____ Old Copy Book/Number: _____

ABSTRACTING INFORMATION
Existing Panels Affected

TWNSUBD	ENG/BLK	BEG SEGLT	END SEGLT
000001 KILA, ST. 000		02	03

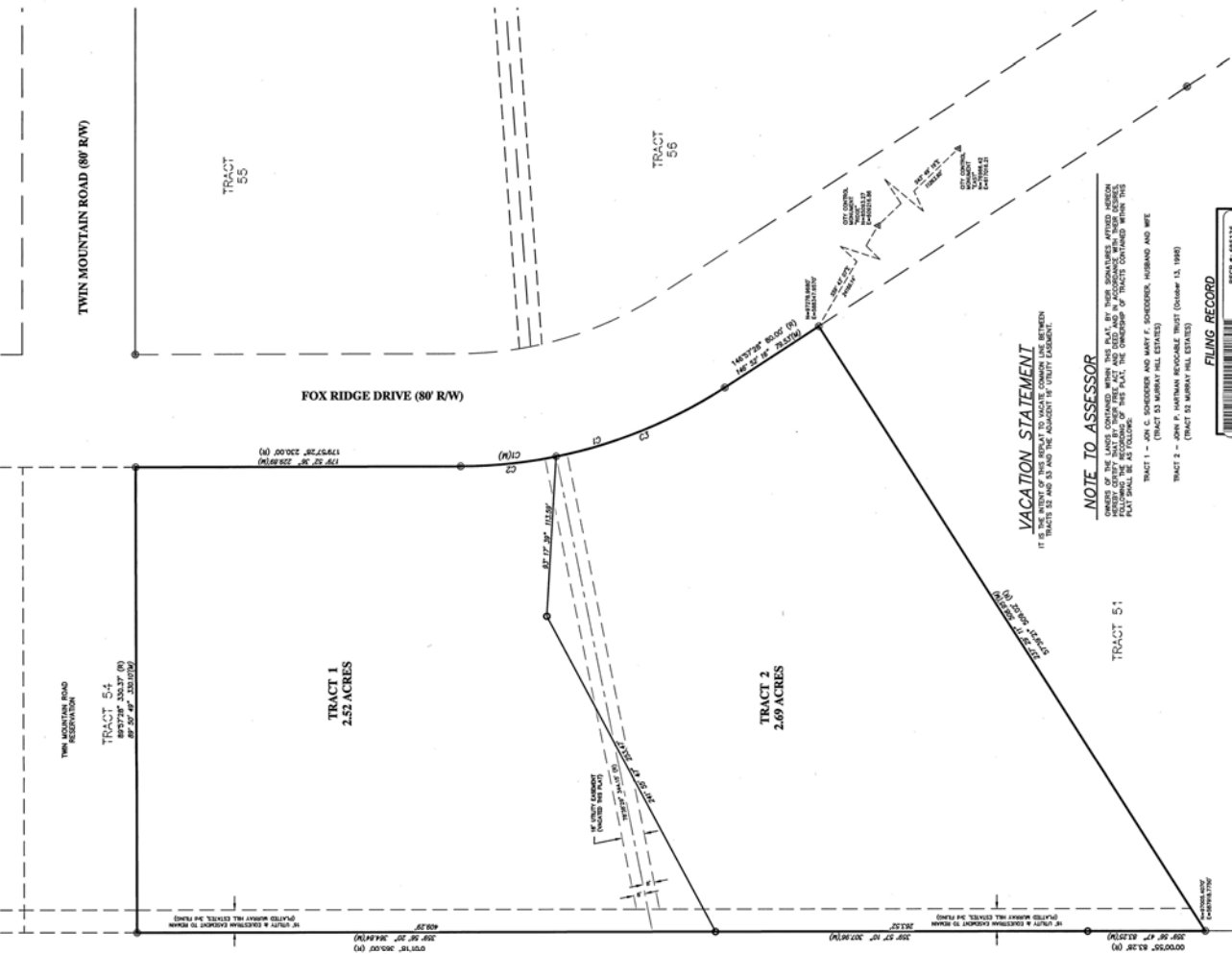
New Substation Panels Created

TWNSUBD	ENG/BLK	BEG SEGLT	END SEGLT
000001 KILA, ST. 000		1	2

000001 KILA, ST. 000
000001 KILA, ST. 000
000001 KILA, ST. 000

NO PROPOSED CENTRAL WATER SUPPLY SYSTEM - NO PROPOSED CENTRALIZED SEWAGE SYSTEM - FIRE PROTECTION TO BE PROVIDED BY FIRE DISTRICT #2 - THE SURFACE ESTATE OF THE LAND TO BE SUBDIVIDED IS SUBJECT TO FULL AND EFFECTIVE DEVELOPMENT OF THE MINERAL ESTATE

CURVE #	DELTA	RADIUS	CHORD BEARING	CHORD LENGTH	ARC LENGTH
C101	32° 57' 13"	343.84'	53° 36' 12"E	195.54'	87.73'
C201	11° 18' 47"	343.84'	55° 49' 29"E	67.89'	67.89'
C301	11° 18' 50"	343.84'	174° 17' 58"	67.89'	67.89'
C302	21° 27' 26"	343.84'	522° 18' 06"E	129.00'	129.00'
C303	21° 41' 20"	343.84'	157° 47' 58"	129.11'	129.11'



DEDICATION
 JOHN P. HORTMAN TRUSTEE FOR JOHN P. HORTMAN REVOCABLE TRUST, (OCTOBER 13, 1998), OWNER, IN FEE SIMPLE OF TRACT 55, MURRAY HILL ESTATES, 3rd FILING, LARAMIE COUNTY, WYOMING, CONTAINING 2.52 ACRES, MORE OR LESS.

AND
 JOHN P. HORTMAN TRUSTEE FOR JOHN P. HORTMAN REVOCABLE TRUST, (OCTOBER 13, 1998), OWNER, IN FEE SIMPLE OF TRACT 55, MURRAY HILL ESTATES, 3rd FILING, LARAMIE COUNTY, WYOMING, CONTAINING 2.52 ACRES, MORE OR LESS.

HERE CAUSED THE SAME TO BE SURVEYED, PLATTED AND KNOWN AS MURRAY HILL ESTATES, 3rd FILING, AND DO HEREBY GRANT THE EASEMENTS AND DO HEREBY GRANT THE EASEMENTS FOR THE PURPOSES INDICATED HEREON.

THE UNDERSIGNED, THEIR LEGAL ACCESSORS AND/OR AGENTS, DO HEREBY FURTHER ACKNOWLEDGE THAT THIS PLAT, IN CONNECTION WITH THE FOREGOING INSTRUMENT, IS SUBJECT TO THE EASEMENTS AND DO HEREBY GRANT THE EASEMENTS CONTAINED WITHIN THE BOUNDARIES OF THIS PLAT.

By: *John C. Schneider*
 John C. Schneider
 Notary Public, Laramie County, Wyoming

By: *Mary F. Schneider*
 Mary F. Schneider
 Notary Public, Laramie County, Wyoming

ACKNOWLEDGEMENTS

STATE OF WYOMING }
 COUNTY OF LARAMIE }
 The foregoing instrument was acknowledged before me this 22 day of SEPTEMBER, 2016 by John C. Schneider and Mary F. Schneider, husband and wife.

My Commission Expires: ATP, Exp. 3-2-17
 Notary Public, Laramie County, Wyoming

STATE OF WYOMING }
 COUNTY OF LARAMIE }
 The foregoing instrument was acknowledged before me this 22 day of SEPTEMBER, 2016 by John P. Hortman trustee for John P. Hortman Revocable Trust, (October 13, 1998).

My Commission Expires: ATP, Exp. 3-2-17
 Notary Public, Laramie County, Wyoming

VACATION STATEMENT

IF IN THE EVENT OF THIS DEED TO MAKE COMPAS LINE BETWEEN TRACTS 54 AND 55 THE QUESTION IS TRACT 55.

TRACT 1 - JOHN C. SCHNEIDER AND MARY F. SCHNEIDER, HUSBAND AND WIFE (TRACT 55 MURRAY HILL ESTATES)

TRACT 2 - JOHN P. HORTMAN REVOCABLE TRUST (OCTOBER 13, 1998) (TRACT 55 MURRAY HILL ESTATES)

TRACT 55 - JOHN P. HORTMAN REVOCABLE TRUST (OCTOBER 13, 1998) (TRACT 55 MURRAY HILL ESTATES)

TRACT 54 - JOHN P. HORTMAN REVOCABLE TRUST (OCTOBER 13, 1998) (TRACT 55 MURRAY HILL ESTATES)

TRACT 53 - JOHN P. HORTMAN REVOCABLE TRUST (OCTOBER 13, 1998) (TRACT 55 MURRAY HILL ESTATES)

TRACT 52 - JOHN P. HORTMAN REVOCABLE TRUST (OCTOBER 13, 1998) (TRACT 55 MURRAY HILL ESTATES)

TRACT 51 - JOHN P. HORTMAN REVOCABLE TRUST (OCTOBER 13, 1998) (TRACT 55 MURRAY HILL ESTATES)

TRACT 50 - JOHN P. HORTMAN REVOCABLE TRUST (OCTOBER 13, 1998) (TRACT 55 MURRAY HILL ESTATES)

TRACT 49 - JOHN P. HORTMAN REVOCABLE TRUST (OCTOBER 13, 1998) (TRACT 55 MURRAY HILL ESTATES)

TRACT 48 - JOHN P. HORTMAN REVOCABLE TRUST (OCTOBER 13, 1998) (TRACT 55 MURRAY HILL ESTATES)

TRACT 47 - JOHN P. HORTMAN REVOCABLE TRUST (OCTOBER 13, 1998) (TRACT 55 MURRAY HILL ESTATES)

TRACT 46 - JOHN P. HORTMAN REVOCABLE TRUST (OCTOBER 13, 1998) (TRACT 55 MURRAY HILL ESTATES)

TRACT 45 - JOHN P. HORTMAN REVOCABLE TRUST (OCTOBER 13, 1998) (TRACT 55 MURRAY HILL ESTATES)

TRACT 44 - JOHN P. HORTMAN REVOCABLE TRUST (OCTOBER 13, 1998) (TRACT 55 MURRAY HILL ESTATES)

TRACT 43 - JOHN P. HORTMAN REVOCABLE TRUST (OCTOBER 13, 1998) (TRACT 55 MURRAY HILL ESTATES)

TRACT 42 - JOHN P. HORTMAN REVOCABLE TRUST (OCTOBER 13, 1998) (TRACT 55 MURRAY HILL ESTATES)

TRACT 41 - JOHN P. HORTMAN REVOCABLE TRUST (OCTOBER 13, 1998) (TRACT 55 MURRAY HILL ESTATES)

NOTE TO ASSESSOR

OWNERS OF THE LOTS CONTAINED WITHIN THIS PLAT, BY THEIR SIGNATURES AFFIRMED HERON FOLLOWING THE RECORDING OF THIS PLAT, THE COMPARISON OF TRACTS CONTAINED WITHIN THIS PLAT SHALL BE AS FOLLOWS:

TRACT 1 - JOHN C. SCHNEIDER AND MARY F. SCHNEIDER, HUSBAND AND WIFE (TRACT 55 MURRAY HILL ESTATES)

TRACT 2 - JOHN P. HORTMAN REVOCABLE TRUST (OCTOBER 13, 1998) (TRACT 55 MURRAY HILL ESTATES)

TRACT 55 - JOHN P. HORTMAN REVOCABLE TRUST (OCTOBER 13, 1998) (TRACT 55 MURRAY HILL ESTATES)

FILING RECORD

RECORD # 691338
 MURRAY HILL ESTATES, 3RD FILING, LARAMIE COUNTY, WYOMING, 2016

FILED IN THE OFFICE OF THE COUNTY CLERK, LARAMIE COUNTY, WYOMING, ON SEPTEMBER 22, 2016.

FILED IN THE OFFICE OF THE COUNTY CLERK, LARAMIE COUNTY, WYOMING, ON SEPTEMBER 22, 2016.

FILED IN THE OFFICE OF THE COUNTY CLERK, LARAMIE COUNTY, WYOMING, ON SEPTEMBER 22, 2016.

CITY APPROVALS

Approved by the Board of Commissioners of Laramie County, Wyoming this 18 day of DECEMBER, 2016.

Approved by the Laramie County Planning Commission this 22 day of SEPTEMBER, 2016.

Approved by the City of Cheyenne Planning Commission this 17 day of SEPTEMBER, 2016.

Approved by the City of Cheyenne, Wyoming, this 22 day of SEPTEMBER, 2016.

COUNTY APPROVALS

Approved by the Board of Commissioners of Laramie County, Wyoming this 18 day of DECEMBER, 2016.

Approved by the Laramie County Planning Commission this 22 day of SEPTEMBER, 2016.

Approved by the City of Cheyenne Planning Commission this 17 day of SEPTEMBER, 2016.

Approved by the City of Cheyenne, Wyoming, this 22 day of SEPTEMBER, 2016.

CITY APPROVALS

Approved by the Board of Commissioners of Laramie County, Wyoming this 18 day of DECEMBER, 2016.

Approved by the Laramie County Planning Commission this 22 day of SEPTEMBER, 2016.

Approved by the City of Cheyenne Planning Commission this 17 day of SEPTEMBER, 2016.

Approved by the City of Cheyenne, Wyoming, this 22 day of SEPTEMBER, 2016.

CERTIFICATE OF SURVEYOR

I, Jeffrey D. Clark, Licensed Professional Land Surveyor in the State of Wyoming, do hereby certify that the foregoing plat was prepared from field notes taken during an actual survey made by me or under my direct supervision, and that the monuments found or set are as shown.

Prepared and Filed for Recording on SEPTEMBER 22, 2016 at Cheyenne, Wyoming.

Recorded on SEPTEMBER 22, 2016 at Cheyenne, Wyoming.

Filed for Recording on SEPTEMBER 22, 2016 at Cheyenne, Wyoming.

GENERAL NOTES

1. BASIS OF BEARINGS - CITY OF CHEYENNE DATUM REFERENCED FROM CITY CONTROL MONUMENTS "SIDE A" "LEFT".

2. ALL CURVE DATA, BEARINGS, DISTANCES AND POINTS OF CURVATURE TO BE UNADJUSTED UNLESS NOTED OTHERWISE.

3. ALL DISTANCES TO BE MEASURED ALONG THE CENTERLINE OF THE ROAD OR FILL, UNLESS OTHERWISE NOTED.

4. WATER SERVICE TO EACH LOT TO BE PROVIDED BY INDIVIDUAL OWNERS TO THE WELL SHALL COMPLY WITH APPLICABLE LOCAL, STATE AND FEDERAL REGULATIONS.

LEGEND

○ SET 1/2" ALUMINUM CAP STAKED 1000 P.L.S. 500'

● ON "2" LOW REBAR

○ MONUMENTS PLACED BY SURVEYOR

○ MONUMENTS PLACED BY SURVEYOR

VICINITY MAP

NEAR TO ROAD

SCALE: 1" = 40'

SCALE: 1" = 40'

SCALE: 1" = 40'

ACKNOWLEDGEMENTS

STATE OF WYOMING }
 COUNTY OF LARAMIE }
 The foregoing instrument was acknowledged before me this 22 day of SEPTEMBER, 2016 by John C. Schneider and Mary F. Schneider, husband and wife.

My Commission Expires: ATP, Exp. 3-2-17
 Notary Public, Laramie County, Wyoming

STATE OF WYOMING }
 COUNTY OF LARAMIE }
 The foregoing instrument was acknowledged before me this 22 day of SEPTEMBER, 2016 by John P. Hortman trustee for John P. Hortman Revocable Trust, (October 13, 1998).

My Commission Expires: ATP, Exp. 3-2-17
 Notary Public, Laramie County, Wyoming

CITY APPROVALS

Approved by the Board of Commissioners of Laramie County, Wyoming this 18 day of DECEMBER, 2016.

Approved by the Laramie County Planning Commission this 22 day of SEPTEMBER, 2016.

Approved by the City of Cheyenne Planning Commission this 17 day of SEPTEMBER, 2016.

Approved by the City of Cheyenne, Wyoming, this 22 day of SEPTEMBER, 2016.

COUNTY APPROVALS

Approved by the Board of Commissioners of Laramie County, Wyoming this 18 day of DECEMBER, 2016.

Approved by the Laramie County Planning Commission this 22 day of SEPTEMBER, 2016.

Approved by the City of Cheyenne Planning Commission this 17 day of SEPTEMBER, 2016.

Approved by the City of Cheyenne, Wyoming, this 22 day of SEPTEMBER, 2016.

CITY APPROVALS

Approved by the Board of Commissioners of Laramie County, Wyoming this 18 day of DECEMBER, 2016.

Approved by the Laramie County Planning Commission this 22 day of SEPTEMBER, 2016.

Approved by the City of Cheyenne Planning Commission this 17 day of SEPTEMBER, 2016.

Approved by the City of Cheyenne, Wyoming, this 22 day of SEPTEMBER, 2016.

CERTIFICATE OF SURVEYOR

I, Jeffrey D. Clark, Licensed Professional Land Surveyor in the State of Wyoming, do hereby certify that the foregoing plat was prepared from field notes taken during an actual survey made by me or under my direct supervision, and that the monuments found or set are as shown.

Prepared and Filed for Recording on SEPTEMBER 22, 2016 at Cheyenne, Wyoming.

Recorded on SEPTEMBER 22, 2016 at Cheyenne, Wyoming.

Filed for Recording on SEPTEMBER 22, 2016 at Cheyenne, Wyoming.

LEGEND

○ SET 1/2" ALUMINUM CAP STAKED 1000 P.L.S. 500'

● ON "2" LOW REBAR

○ MONUMENTS PLACED BY SURVEYOR

○ MONUMENTS PLACED BY SURVEYOR

VICINITY MAP

NEAR TO ROAD

SCALE: 1" = 40'

SCALE: 1" = 40'

SCALE: 1" = 40'

ACKNOWLEDGEMENTS

STATE OF WYOMING }
 COUNTY OF LARAMIE }
 The foregoing instrument was acknowledged before me this 22 day of SEPTEMBER, 2016 by John C. Schneider and Mary F. Schneider, husband and wife.

My Commission Expires: ATP, Exp. 3-2-17
 Notary Public, Laramie County, Wyoming

STATE OF WYOMING }
 COUNTY OF LARAMIE }
 The foregoing instrument was acknowledged before me this 22 day of SEPTEMBER, 2016 by John P. Hortman trustee for John P. Hortman Revocable Trust, (October 13, 1998).

My Commission Expires: ATP, Exp. 3-2-17
 Notary Public, Laramie County, Wyoming

CITY APPROVALS

Approved by the Board of Commissioners of Laramie County, Wyoming this 18 day of DECEMBER, 2016.

Approved by the Laramie County Planning Commission this 22 day of SEPTEMBER, 2016.

Approved by the City of Cheyenne Planning Commission this 17 day of SEPTEMBER, 2016.

Approved by the City of Cheyenne, Wyoming, this 22 day of SEPTEMBER, 2016.

COUNTY APPROVALS

Approved by the Board of Commissioners of Laramie County, Wyoming this 18 day of DECEMBER, 2016.

Approved by the Laramie County Planning Commission this 22 day of SEPTEMBER, 2016.

Approved by the City of Cheyenne Planning Commission this 17 day of SEPTEMBER, 2016.

Approved by the City of Cheyenne, Wyoming, this 22 day of SEPTEMBER, 2016.

CITY APPROVALS

Approved by the Board of Commissioners of Laramie County, Wyoming this 18 day of DECEMBER, 2016.

Approved by the Laramie County Planning Commission this 22 day of SEPTEMBER, 2016.

Approved by the City of Cheyenne Planning Commission this 17 day of SEPTEMBER, 2016.

Approved by the City of Cheyenne, Wyoming, this 22 day of SEPTEMBER, 2016.

CERTIFICATE OF SURVEYOR

I, Jeffrey D. Clark, Licensed Professional Land Surveyor in the State of Wyoming, do hereby certify that the foregoing plat was prepared from field notes taken during an actual survey made by me or under my direct supervision, and that the monuments found or set are as shown.

Prepared and Filed for Recording on SEPTEMBER 22, 2016 at Cheyenne, Wyoming.

Recorded on SEPTEMBER 22, 2016 at Cheyenne, Wyoming.

Filed for Recording on SEPTEMBER 22, 2016 at Cheyenne, Wyoming.

LEGEND

○ SET 1/2" ALUMINUM CAP STAKED 1000 P.L.S. 500'

● ON "2" LOW REBAR

○ MONUMENTS PLACED BY SURVEYOR

○ MONUMENTS PLACED BY SURVEYOR

VICINITY MAP

NEAR TO ROAD

SCALE: 1" = 40'

SCALE: 1" = 40'

SCALE: 1" = 40'

ACKNOWLEDGEMENTS

STATE OF WYOMING }
 COUNTY OF LARAMIE }
 The foregoing instrument was acknowledged before me this 22 day of SEPTEMBER, 2016 by John C. Schneider and Mary F. Schneider, husband and wife.

My Commission Expires: ATP, Exp. 3-2-17
 Notary Public, Laramie County, Wyoming

STATE OF WYOMING }
 COUNTY OF LARAMIE }
 The foregoing instrument was acknowledged before me this 22 day of SEPTEMBER, 2016 by John P. Hortman trustee for John P. Hortman Revocable Trust, (October 13, 1998).

My Commission Expires: ATP, Exp. 3-2-17
 Notary Public, Laramie County, Wyoming

CITY APPROVALS

Approved by the Board of Commissioners of Laramie County, Wyoming this 18 day of DECEMBER, 2016.

Approved by the Laramie County Planning Commission this 22 day of SEPTEMBER, 2016.

Approved by the City of Cheyenne Planning Commission this 17 day of SEPTEMBER, 2016.

Approved by the City of Cheyenne, Wyoming, this 22 day of SEPTEMBER, 2016.

COUNTY APPROVALS

Approved by the Board of Commissioners of Laramie County, Wyoming this 18 day of DECEMBER, 2016.

Approved by the Laramie County Planning Commission this 22 day of SEPTEMBER, 2016.

Approved by the City of Cheyenne Planning Commission this 17 day of SEPTEMBER, 2016.

Approved by the City of Cheyenne, Wyoming, this 22 day of SEPTEMBER, 2016.

CITY APPROVALS

Approved by the Board of Commissioners of Laramie County, Wyoming this 18 day of DECEMBER, 2016.

Approved by the Laramie County Planning Commission this 22 day of SEPTEMBER, 2016.

Approved by the City of Cheyenne Planning Commission this 17 day of SEPTEMBER, 2016.

Approved by the City of Cheyenne, Wyoming, this 22 day of SEPTEMBER, 2016.

CERTIFICATE OF SURVEYOR

I, Jeffrey D. Clark, Licensed Professional Land Surveyor in the State of Wyoming, do hereby certify that the foregoing plat was prepared from field notes taken during an actual survey made by me or under my direct supervision, and that the monuments found or set are as shown.

Prepared and Filed for Recording on SEPTEMBER 22, 2016 at Cheyenne, Wyoming.