

EXISTING WATER SUPPLY SYSTEM AND SEWAGE SYSTEM PROVIDED BY SOUTH CHEYENNE WATER & SEWER TO REMAIN - FIRE PROTECTION TO BE PROVIDED BY FIRE DISTRICT #1

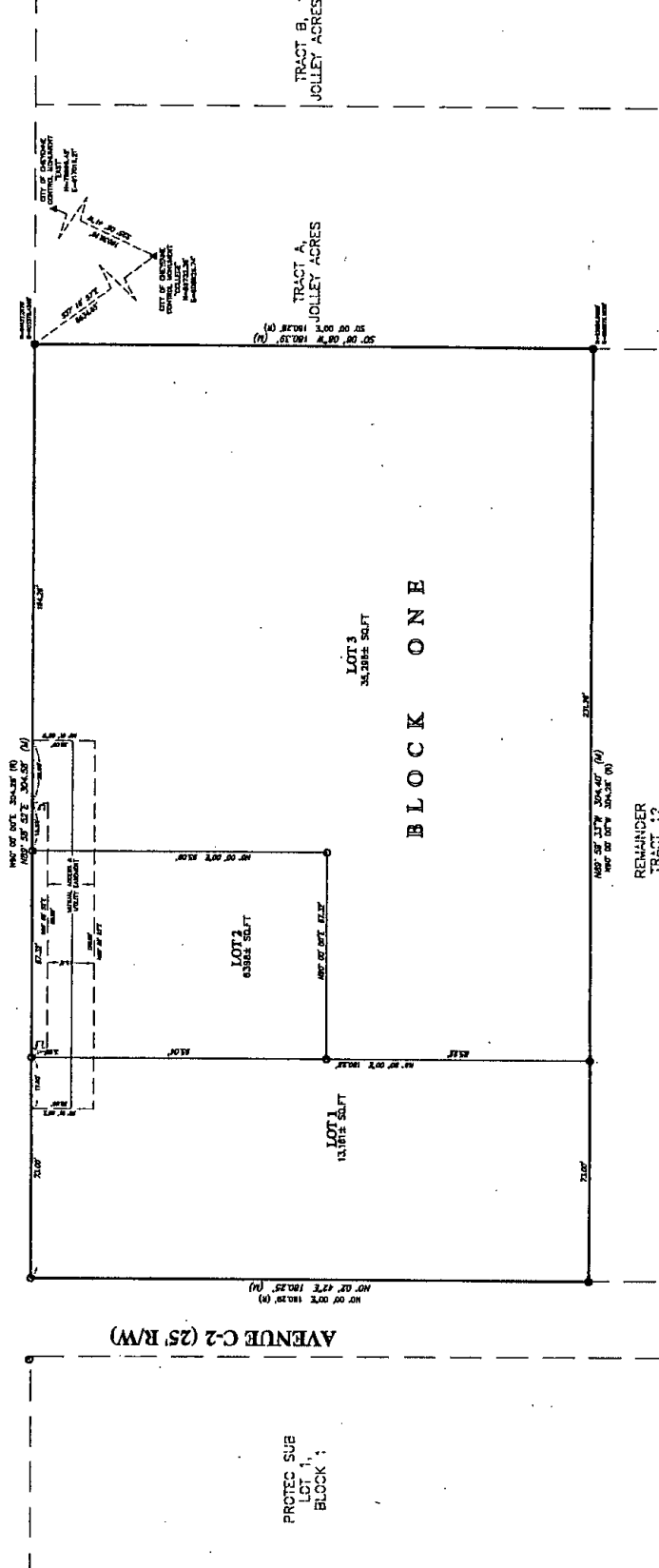
1/4 TRACT 35,
CHEYENNE IRRIG.
GARDENS 2

1/4 TRACT 35,
CHEYENNE IRRIG.
GARDENS 2

1/4 TRACT 35,
CHEYENNE IRRIG.
GARDENS 2

TRACT 35,
CHEYENNE IRRIG.
GARDENS 2

EAST FOX FARM ROAD (80' R/W)



LINE TABLE	Line #	Bearing	Length
	12	N 0° 01' 00" W	5.00'
	13	N 0° 01' 00" W	5.00'



VACATION STATEMENT
IT IS THE INTENT OF THE DONOR TO VACATE ALL OF THE NORTH 100 FEET OF THE NORTH 100 FEET TRACTS CONTAINED WITHIN THIS MAP.

FILING RECORD
RECORD # 100000
FILED IN PUBLIC OFFICE OF PLANNING COMMISSION, CITY OF CHEYENNE, WYOMING, ON SEP 21, 2014.

APPROVALS
Approved by the City of Cheyenne Planning Commission this 21st day of SEPTEMBER, 2014.

APPROVALS
Approved by the Board of Laramie County Commissioners of Laramie County, Wyoming, this 21st day of SEPTEMBER, 2014.

APPROVALS
Approved by the Laramie County Planning Commission, this 21st day of SEPTEMBER, 2014.

ATTEST
City Clerk

ATTEST
County Clerk

- LEGEND**
- 0 1/4 TRACT 35, CHEYENNE IRRIG. GARDENS 2
 - 1/4 TRACT 35, CHEYENNE IRRIG. GARDENS 2
 - 1/4 TRACT 35, CHEYENNE IRRIG. GARDENS 2
 - 1/4 TRACT 35, CHEYENNE IRRIG. GARDENS 2
- NOTES**
- 1) BASIS OF ELEVATION - CITY OF CHEYENNE DATUM
 - 2) MUTUAL ACCESS & EGRESS TO ALL OWNERS OF LANDS CONTAINED WITHIN THIS MAP.
 - 3) THESE TRACTS SHALL BE CONVEYED TO ALL OWNERS OF LANDS CONTAINED WITHIN THIS MAP.
 - 4) THESE TRACTS SHALL BE CONVEYED TO ALL OWNERS OF LANDS CONTAINED WITHIN THIS MAP.
 - 5) THESE TRACTS SHALL BE CONVEYED TO ALL OWNERS OF LANDS CONTAINED WITHIN THIS MAP.

EASEMENT DESCRIPTION
A PERMANENT EASEMENT SHALL BE GRANTED TO ALL OWNERS OF LANDS CONTAINED WITHIN THIS MAP FOR THE PURPOSES OF CONVEYING TO ALL OWNERS OF LANDS CONTAINED WITHIN THIS MAP...

DEDICATION
KNOW ALL PERSONS BY THESE PRESENTS THAT THE 8 Nelson Reversible Trust, created by the will of the late Nelson Reversible Trust, has dedicated to the City of Cheyenne, Wyoming, the North 100 Feet of Tract 12, Clear View Tracts, Laramie County, Wyoming, for the purpose of providing fire protection to the lands contained therein...

ACKNOWLEDGEMENT
I, Jeffery B. Jones, Registered Professional Land Surveyor in the State of Wyoming, do hereby certify that this map was prepared by me or under my direct supervision and that the measurements found or set are as shown.

CERTIFICATE OF SURVEYOR
I, Jeffery B. Jones, Registered Professional Land Surveyor in the State of Wyoming, do hereby certify that this map was prepared by me or under my direct supervision and that the measurements found or set are as shown.

FINAL PLAT
NELSON SUBDIVISION
1ST FILING

A REPLAT OF THE NORTH 100 FEET OF TRACT 12 CLEAR VIEW TRACTS, LARAMIE COUNTY, WYOMING, PREPARED SEPTEMBER, 2014.

STEEL SURVEYING SERVICES, LLC
PROFESSIONAL LAND SURVEYORS
2100 W. 20th St., Cheyenne, WY 82001 • (307) 237-2373
www.steel-surveying.com • info@steel-surveying.com