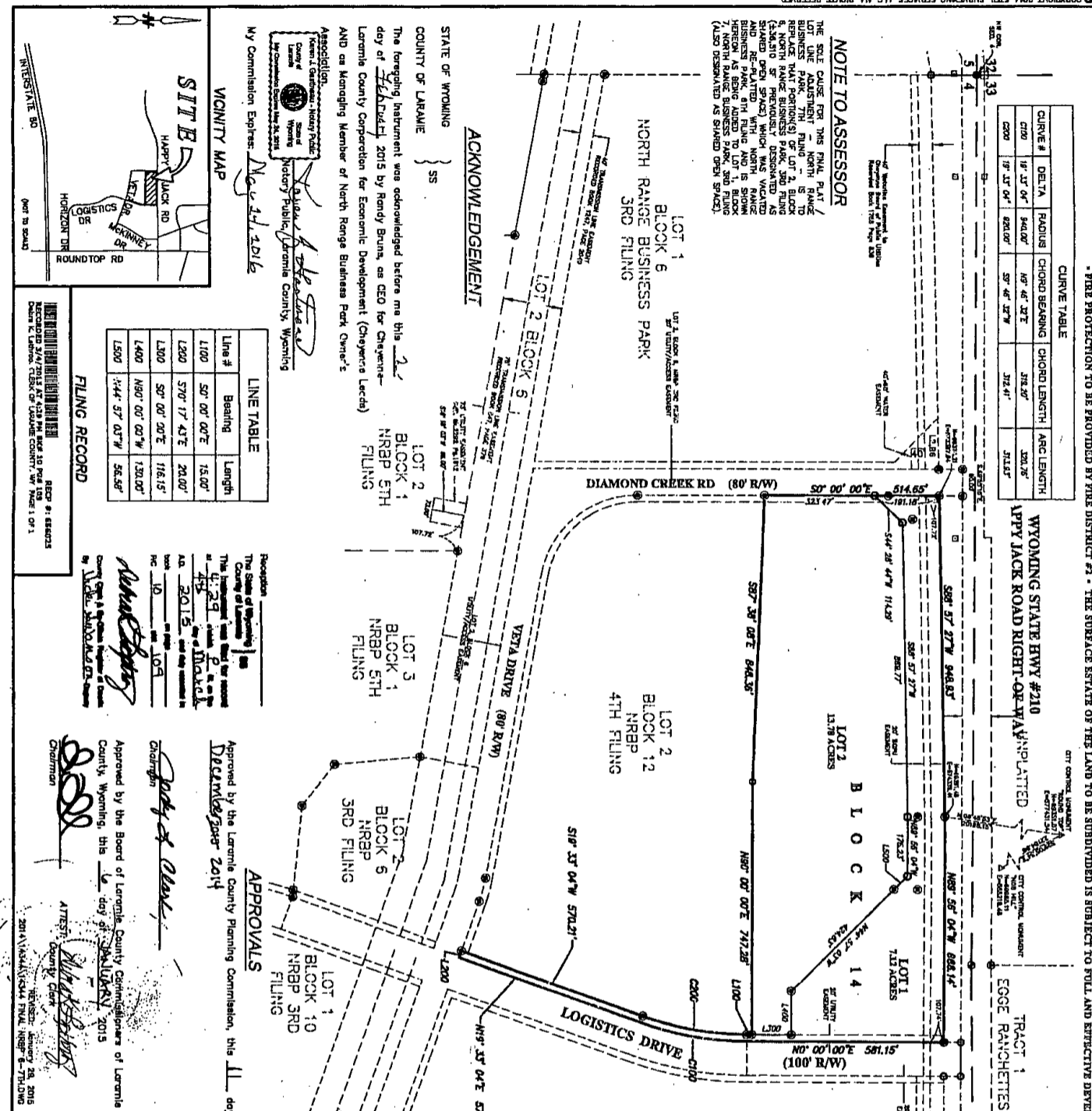


**CURVE TABLE**

CURVE #	DELTA	RADIUS	CHORD BEARING	CHORD LENGTH	ARC LENGTH
C100	18° 32' 04"	644.00'	N8° 46' 32" E	318.20'	200.25'
C200	19° 32' 04"	628.00'	S7° 46' 32" W	312.41'	213.87'

**NOTE TO ASSESSOR**

THE SOLE CAUSE FOR THIS FINAL PLAT / LOT LINE ADJUSTMENT FOR NORTH RANGE BUSINESS PARK, 7TH FILING, IS TO REPLACE THAT PORTION(S) OF LOT 2, BLOCK 6, NORTH RANGE BUSINESS PARK, 3RD FILING, SHARED OPEN SPACE, WHICH WAS VACATED AND RE-PLATTED WITH NORTH RANGE BUSINESS PARK, 4TH FILING AND BUSINESS PARK, 5TH FILING AND BUSINESS PARK, 7TH FILING AND BUSINESS PARK, 8TH FILING (ALSO DESIGNATED AS SHARED OPEN SPACE).



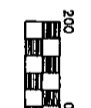
\* FIRE PROTECTION TO BE PROVIDED BY FIRE DISTRICT #1 - THE SURFACE ESTATE OF THE LAND TO BE SUBDIVIDED IS SUBJECT TO FULL AND EFFECTIVE DEVELOPMENT OF THE MINERAL ESTATE

WYOMING STATE HWY #210  
UPPY JACK ROAD RIGHT-OF-WAY UNPLATTED

TRACT 1  
EDGE RANCHETTES

**LEGEND**

- FOUND 1 1/2" ALUMINUM CAP STAMPED "SSS P.L.S. 2500"
- FOUND 3/4" ALUMINUM CAP STAMPED "STEEL SURVEYING SERVICES P.L.S. 5910" AND APPROPRIATE DATA.
- FOUND 3/4" ALUMINUM CAP STAMPED "P.L.S. 2927"
- FOUND NO. 0.1: 1/4" MONUMENT
- FOUND 1/2" BRASS CAP WITNESS CORNER STAMPED "L.S. 518"
- SET 1 1/2" ALUMINUM CAP STAMPED "SSS P.L.S. 8910"
- ON A 4" X 2" STEEL BEAM
- FOUND 4" X 2" LONG BEAM WITH 2 1/2" ALUMINUM CAP STAMPED "SSS P.L.S. 2500" AND APPROPRIATE DATA.
- CITY OF CHEYENNE CONTROL MONUMENT
- NEBP DENOTES NORTH RANGE BUSINESS PARK



**DEDICATION**

KNOW ALL PERSONS BY THESE PRESENTS THAT: CHEYENNE LARAMIE COUNTY CORPORATION FOR ECONOMIC DEVELOPMENT (CHEYENNE LEAS), a Wyoming not-for-profit corporation, owner of Lot 1, Block 7, North Range Business Park, 3rd Filing and Lot 1, Block 12, North Range Business Park, 4th Filing; by filing this plat is to be approved and recorded and do hereby dedicate the LOT LINE ADJUSTMENT of said land on its corporate records to be the same for the purposes indicated hereon.

CHEYENNE LEAS  
NORTH RANGE BUSINESS PARK  
COMMERCIAL OWNERS ASSOCIATION

by *Randy Bruns, CEO* by *Randy Bruns*  
Randy Bruns, Wyoming Member

**CERTIFICATE OF SURVEYOR**



I, Jeffrey B. Jones, Registered Professional Land Surveyor in the State of Wyoming, for and on behalf of Steel Surveying Services, LLC, hereby certify that to the best of my knowledge and belief, that this map was prepared from field notes taken during an actual survey made by me or under my direct supervision and that this map correctly shows the boundaries and monuments and that the monuments found or set are as shown.

**FINAL PLAT**

**FOR NORTH RANGER BUSINESS PARK 7TH FILING**

A REPLAT OF  
LOT 1, BLOCK 7,  
NORTH RANGE BUSINESS PARK, 3RD FILING  
AND  
LOT 1, BLOCK 12,  
NORTH RANGE BUSINESS PARK, 4TH FILING  
LARAMIE COUNTY, WYOMING.  
PREPARED OCTOBER, 2014

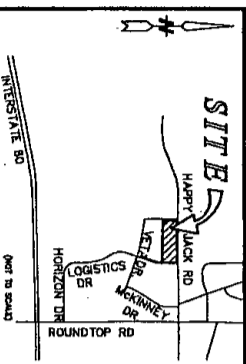
**STEEL SURVEYING SERVICES, LLC**  
PROFESSIONAL LAND SURVEYORS  
1109 RIZZIT 10th ST. CHEYENNE, WY 82001 • (307) 634-2273  
726 OLCHEKOST ST. WHEATLAND, WY 82201 • (307) 322-3789  
www.steelssurvey.com • info@steelssurvey.com

STATE OF WYOMING  
COUNTY OF LARAMIE

The foregoing instrument was acknowledged before me this 1st day of October, 2015 by Randy Bruns, as CEO for Cheyenne Laramie County Corporation for Economic Development (Cheyenne Leas) AND as Managing Member of North Range Business Park Owner's Association.

My Commission Expires: Nov 11, 2016

**VICINITY MAP**



**FILING RECORD**

RECORDED 2/4/2015 AT 10:50 PM IN PLAT BOOK 108  
PLAT 1 OF 1  
LARAMIE COUNTY, WYOMING

Recordation  
The State of Wyoming  
County of Laramie  
This instrument was filed for record on 10/29 at 10:50 AM on 10/29/2015 at the Office of the County Clerk of Laramie County, Wyoming.  
PLAT ID: 108

Approved by the Board of Laramie County Planning Commission, this 11 day of December, 2014

*Jody A. O'Neil*  
Chairman

Approved by the Board of Laramie County Commissioners of Laramie County, Wyoming, this 6 day of September, 2015

ATTEST:  
County Clerk  
2014/09/24 10:54 AM WYOMING PLAT BOOK 108 - P. 1 OF 1