

DEDICATION

KNOW ALL PERSONS BY THESE PRESENTS THAT: Mrs. A. Woods, as sole owner, owner in fee simple of the following described tract of land:

564 Lot 2, SUSSENA, SUSSENA HEIGHTS, BEING the west 400 feet of the NW1/4 and except the first 50 ft. of County Road #124 (Old Yellowstone Highway) all in Section 18, Township 15 North, Range 66 West of the 6th P.M., Laramie County, Wyoming.

Has caused the same to be surveyed, located and shown as NORTH STAR NORTH, does hereby declare the subdivision of said land as it appears on this plat, to be their free act and deed in accordance with their desire, and do hereby grant the easements for the purposes indicated herein.

Mrs. A. Woods
 Mrs. A. Woods

ACKNOWLEDGEMENT

STATE OF WYOMING } SS
 COUNTY OF LARAMIE }
 The foregoing instrument was acknowledged before me this 29th day of December, 2012 by Mrs. A. Woods, the owner.
 Notary Public, Laramie County, Wyoming
 My Commission Expires: June 29, 2017



APPROVALS

Approved by the Laramie County Planning Commission this 9th day of August, 2012
Jody Clark
 Chairman

Approved by the Board of County Commissioners of Laramie County, Wyoming, this 21st day of August, 2012
Carolyn L. Bowers
 County Clerk



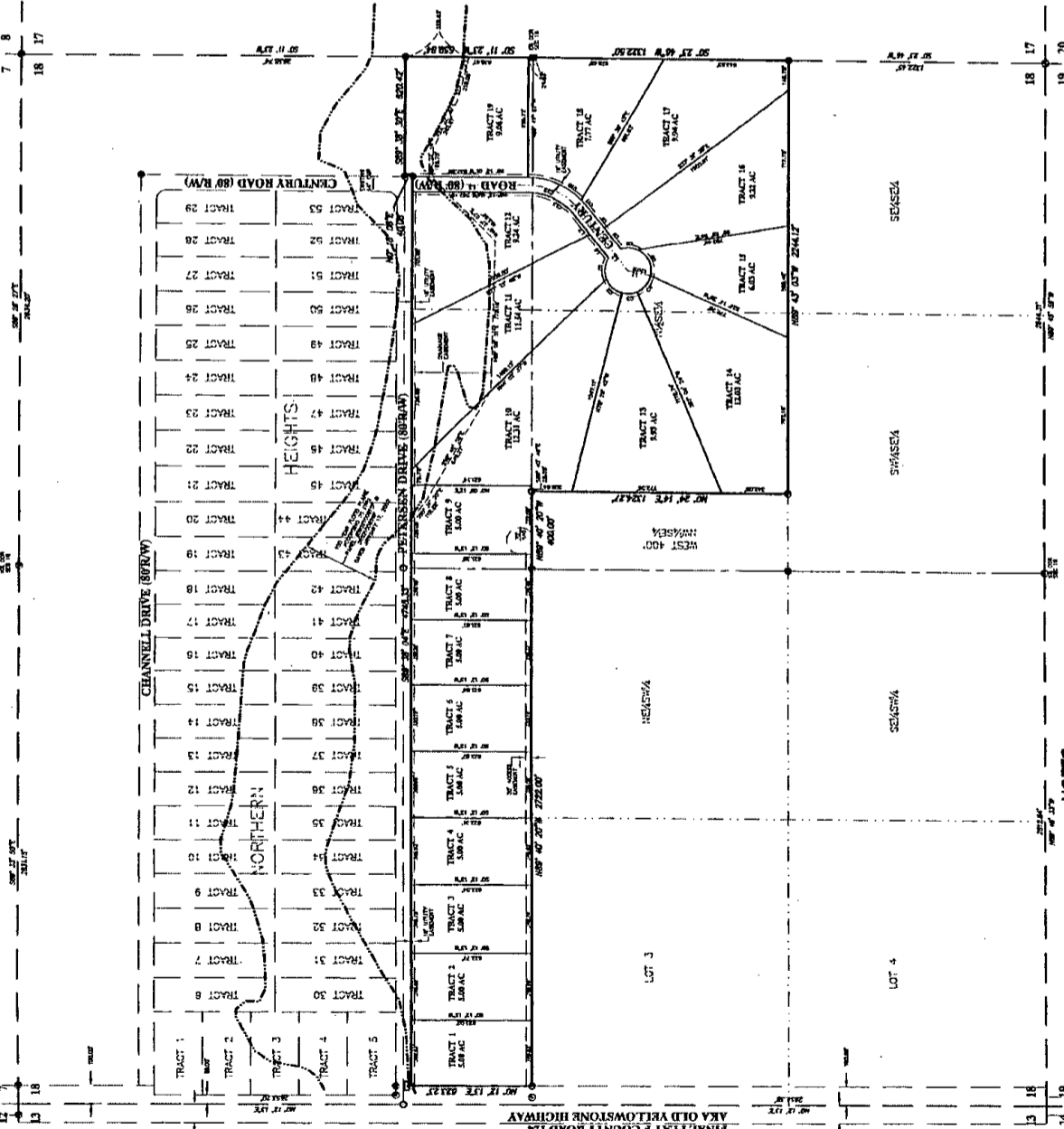
CERTIFICATE OF SURVEYOR
 I, John A. Clark, Registered Professional Land Surveyor in the State of Wyoming, hereby certify that this plat of NORTH STAR NORTH was prepared from correct data and is a true and correct representation of the same as shown on the ground and that this plat correctly represents said survey of the land depicted herein to the best of my knowledge.

NORTH STAR NORTH

A PORTION OF SECTION 18, TOWNSHIP 15 NORTH, RANGE 66 WEST OF THE 6TH P.M., LARAMIE COUNTY, WYOMING.

PREPARED JUNE, 2012

STEEL SURVEYING SERVICES, LLC
 PROFESSIONAL LAND SURVEYORS
 1009 W. 19th St. Cheyenne, WY 82001 (307)344-3773
 704 GILCHRIST ST. HELENA, MT. 59601 (406)832-2789



CURVE TABLE

CURVE NO.	DELTA	RADIUS	CHORD BEARING	CHORD LENGTH	ARC LENGTH
C1	44° 27' 42"	122.00'	S87° 12' 27" W	108.17'	114.67'
C2	44° 27' 42"	122.00'	S87° 12' 27" W	108.17'	114.67'
C3	27° 12' 24"	122.00'	S87° 12' 27" W	108.17'	114.67'
C4	27° 12' 24"	122.00'	S87° 12' 27" W	108.17'	114.67'
C5	27° 12' 24"	122.00'	S87° 12' 27" W	108.17'	114.67'
C6	27° 12' 24"	122.00'	S87° 12' 27" W	108.17'	114.67'
C7	27° 12' 24"	122.00'	S87° 12' 27" W	108.17'	114.67'
C8	27° 12' 24"	122.00'	S87° 12' 27" W	108.17'	114.67'
C9	27° 12' 24"	122.00'	S87° 12' 27" W	108.17'	114.67'
C10	27° 12' 24"	122.00'	S87° 12' 27" W	108.17'	114.67'
C11	27° 12' 24"	122.00'	S87° 12' 27" W	108.17'	114.67'
C12	27° 12' 24"	122.00'	S87° 12' 27" W	108.17'	114.67'
C13	27° 12' 24"	122.00'	S87° 12' 27" W	108.17'	114.67'
C14	27° 12' 24"	122.00'	S87° 12' 27" W	108.17'	114.67'

LEGEND

- 1/4" x 1/4" LUMBER WITH "N" ALUMINUM SET BACK MARK
- 1/4" x 1/4" LUMBER WITH "S" ALUMINUM SET BACK MARK
- 1/4" x 1/4" LUMBER WITH "E" ALUMINUM SET BACK MARK
- 1/4" x 1/4" LUMBER WITH "W" ALUMINUM SET BACK MARK
- 1/4" x 1/4" LUMBER WITH "N" ALUMINUM SET BACK MARK
- 1/4" x 1/4" LUMBER WITH "S" ALUMINUM SET BACK MARK
- 1/4" x 1/4" LUMBER WITH "E" ALUMINUM SET BACK MARK
- 1/4" x 1/4" LUMBER WITH "W" ALUMINUM SET BACK MARK
- 1/4" x 1/4" LUMBER WITH "N" ALUMINUM SET BACK MARK
- 1/4" x 1/4" LUMBER WITH "S" ALUMINUM SET BACK MARK
- 1/4" x 1/4" LUMBER WITH "E" ALUMINUM SET BACK MARK
- 1/4" x 1/4" LUMBER WITH "W" ALUMINUM SET BACK MARK
- 1/4" x 1/4" LUMBER WITH "N" ALUMINUM SET BACK MARK
- 1/4" x 1/4" LUMBER WITH "S" ALUMINUM SET BACK MARK
- 1/4" x 1/4" LUMBER WITH "E" ALUMINUM SET BACK MARK
- 1/4" x 1/4" LUMBER WITH "W" ALUMINUM SET BACK MARK

NOTES

- 1) ALL PLATS AND RECORDS ARE SUBJECT TO THE PUBLIC RECORDS ACT.
- 2) THIS PLAT IS A PRELIMINARY PLAT AND IS NOT TO BE USED FOR ANY PURPOSE OTHER THAN AS SHOWN ON THIS PLAT.
- 3) THE SURVEYOR'S OFFICE IS NOT RESPONSIBLE FOR ANY DAMAGE TO ANY PROPERTY OR PERSONS CAUSED BY THE USE OF THIS PLAT.
- 4) ALL PLATS AND RECORDS ARE SUBJECT TO THE PUBLIC RECORDS ACT.
- 5) THIS PLAT IS A PRELIMINARY PLAT AND IS NOT TO BE USED FOR ANY PURPOSE OTHER THAN AS SHOWN ON THIS PLAT.
- 6) THE SURVEYOR'S OFFICE IS NOT RESPONSIBLE FOR ANY DAMAGE TO ANY PROPERTY OR PERSONS CAUSED BY THE USE OF THIS PLAT.

VICINITY MAP

