

10/27/86 - OK
11/13/86

PLAT LINE, F.B.S. CRANE & DRIVE-PASTOR
CHEYENNE ORTHODOX PRESBYTERIAN CHURCH
8209 POWDER HOUSE ROAD
CHEYENNE, WYOMING 82009

NOTE:
APPROVAL OF THIS PLAT BY THE
GOVERNING BODIES WILL EFFECTIVELY
VACATE ALL OF THE INTERNAL LOTS
AND BLOCKS OF NORTHWOODS SUBDIVISION
TOGETHER WITH ALL THE INTERNAL LOT
MONUMENTS, AND INCLUDING THE VACATION
OF NORTHWOODS DRIVE.

CERTIFICATE OF SURVEYOR
STATE OF WYOMING
COUNTY OF LARAMIE

I, Donald M. Hopkins, a Professional Engineer and
Land Surveyor, registered in the State of Wyoming,
hereby certify that this plat was made from
notes of a survey made under my direction and
completed on the 23rd day of January, 1986, and
that said survey is accurately represented on
this plat as staked in the field.



DEDICATION

Know all men by these presents, that the
Cheyenne Orthodox Presbyterian Church, owners
in fee simple of the land embraced in this plat
do hereby declare that the subdivision of the
described land is with their free consent and
knowledge, and in accordance with their desires,
and do hereby grant the easements shown for
the purposes indicated on the plat.

Craig R. Rowe
CRAIG R. ROWE-PASTOR

Dean B. Holmes
DEAN B. HOLMES-PRESIDENT
BOARD OF TRUSTEES

ACKNOWLEDGEMENT

STATE OF WYOMING
COUNTY OF LARAMIE

The foregoing dedication was acknowledged before
me at the above signed persons who are
of legal age, single, and of the County of
Cheyenne, Orthodox Presbyterian Church, and that the
execution of said dedication was their own free
act and deed and in accordance with their desires.
Dated this 23rd day of January, 1986.
John B. Holm
NOTARY PUBLIC My commission expires

APPROVALS

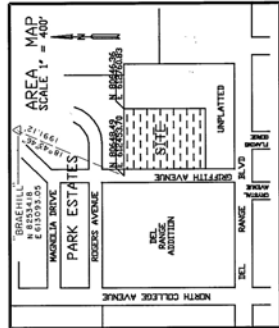
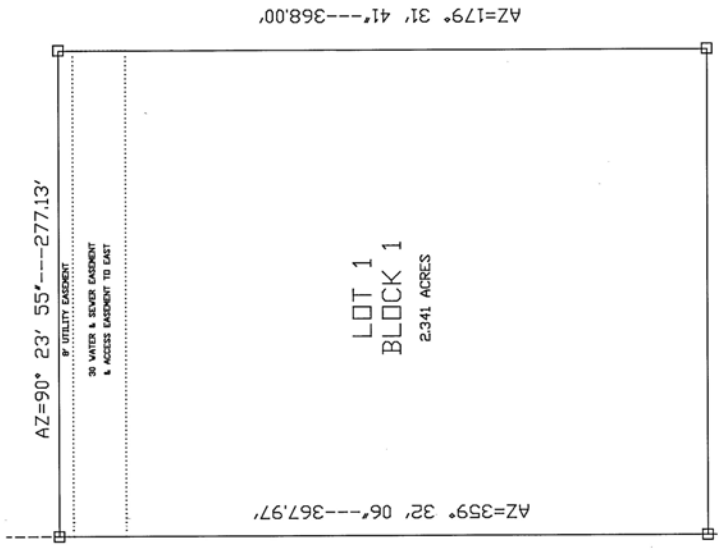
APPROVED BY THE CHEYENNE-LARAMIE COUNTY PLANNING
COMMISSION ON THIS DAY OF January, 1986

John B. Holm CHAIRMAN
John B. Holm SECRETARY
APPROVED BY THE CITY COUNCIL OF THE CITY OF CHEYENNE
ON THIS DAY OF January, 1986
John B. Holm MAYOR

NOTE:
THE INTERNAL CONTROL MONUMENTS WERE SET BY C.S.S.A
ON NORTHWOODS SUBDIVISION. THE CONTROL MONUMENTS
ARE STILL VALID FOR NORTHWOODS COMMUNITY CHURCH
SUBDIVISION AND NEW MONUMENTS WERE NOT SET.
THE TIE AND CO-ORDINATES ESTABLISHED ARE SHOWN
ON THE AREA MAP.

LEGEND

- FOUND POINTS
- SURVEY CAPS BY C.S.S.A
- NORTHWOODS SUBDIVISION WAS SURVEYED & PLATTED BY C.S.S.A
IN SEPTEMBER 1981. ALL FOUR CORNER MONUMENTS WERE FOUND.
- SET POINTS



RECEIPTION # 8343
The State of Wyoming
County of Laramie

This instrument was filed for record
at 7:47 o'clock P.M. on the
23rd day of April
A.D. 1986 and duly recorded in
Book 5 Page 267-164

John B. Holm
County Clerk & City Register at Cheyenne
By *John B. Holm* Deputy

DRAWING MADE BY CADD LSE 1135
dm hopkins & associates
216 east 17th street
Cheyenne, Wyoming
632-4763 82001

A FINAL PLAT
OF
NORTHWOODS COMMUNITY
CHURCH SUBDIVISION
A REPLAT OF NORTHWOODS SUBDIVISION
LOCATED IN THE SW 1/4 SE 1/4
SECTION 22, T. 14 N., R. 66 W., 6TH P.M.
CITY OF CHEYENNE
LARAMIE COUNTY, WYOMING

SCALE 1" = 50' JANUARY 22, 1986