

**WATER AND WASTE WATER SERVICE BY SOUTH CHEYENNE WATER AND SEWER DISTRICT
FIRE PROTECTION BY FIRE DISTRICT NUMBER ONE**

Notes:
1. The map, plat, or certificate is subject to the provisions of the laws of Wyoming relating to the same and the same shall be subject to the same laws and regulations as if it were a plat or certificate.
2. This document is valid only if it has been approved by the Board of Commissioners of the City of Cheyenne and the Board of Commissioners of the Fire District Number One.
3. The City of Cheyenne and the Fire District Number One are not liable for any damages or losses resulting from the use of this document.
4. This document is subject to the provisions of the laws of Wyoming relating to the same and the same shall be subject to the same laws and regulations as if it were a plat or certificate.

Medication

Know All Men by These Presents That South Cheyenne Water and Waste Water Service District, Fire District Number One, do hereby certify that the platting of these lands as it appears on this plat, to be the true and correct plat of the same, and that the same do hereby grant all easements as shown therein for the purposes to be indicated.

Madame Sperry Kincaid
Director

J. L. Capp
Director

Acknowledgement

State of Wyoming, County of Laramie, ss: I, _____, Clerk of the County of Laramie, do hereby certify that the within and foregoing plat was duly recorded in the office of the County Clerk of the County of Laramie, Wyoming, on the _____ day of _____, 19____, and that the same is a true and correct copy of the original plat as the same appears on the records of the County Clerk of the County of Laramie, Wyoming.

In Witness Whereof, I have hereunto set my hand and affixed the seal of my office on the day, month, and year as first above written.

My Commission Expires: **April 1, 2001**

Spinkley
County Public

Approvals

Approved by the Cheyenne - Laramie County Regional Planning Commission on this _____ day of the month of _____, 19____, in the Year of Our Lord 19____.

Development Director: *Joseph A. Wilson*

Approved by the Commissioners of Laramie County, Wyoming on this _____ day of the month of _____, 19____, in the Year of Our Lord 19____.

Chairman

Laramie County Clerk

Land Description

A parcel of land, situate, lieven, and being all of lot 1 of Block 16 of Orchard East, as shown on the plat of the same, recorded in the office of the County Clerk of the County of Laramie, Wyoming, on the _____ day of _____, 19____, and being more particularly described as follows, to-wit: _____

Verdicate of Surveyor

State of Wyoming, County of Laramie, ss: I, _____, Surveyor, do hereby certify that the plat of Orchard East was prepared from field notes of a survey of the same, made by me, the undersigned, on the _____ day of _____, 19____, and that the same is a true and correct copy of the original plat as the same appears on the records of the County Clerk of the County of Laramie, Wyoming.

LARRY T. PERRY L.S.
Wyoming Reg. No. 12345

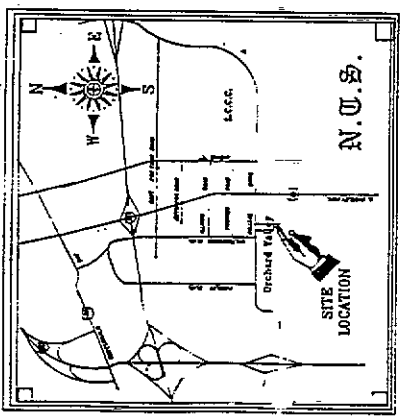
* A plat for the location of Plum Street and Apple Street was submitted to the Laramie County Board of Commissioners by the Orchard Valley Home Owners Association on the _____ day of _____, 19____, and was approved by the Board of Commissioners on the _____ day of _____, 19____, and the same was recorded in the office of the County Clerk of the County of Laramie, Wyoming, on the _____ day of _____, 19____, and the same is a true and correct copy of the original plat as the same appears on the records of the County Clerk of the County of Laramie, Wyoming.

Notes:
All Lot Corners are monumented with a 6/8" x 2 1/2" stake with a 1/2" x 1/2" Aluminum Cap Marked LS 3047 UNLESS NOTED

Approved by the City Council of the City of Cheyenne, Wyoming on this _____ day of the month of _____, 19____, in the Year of Our Lord One Thousand Nine Hundred _____ and Ninety _____.

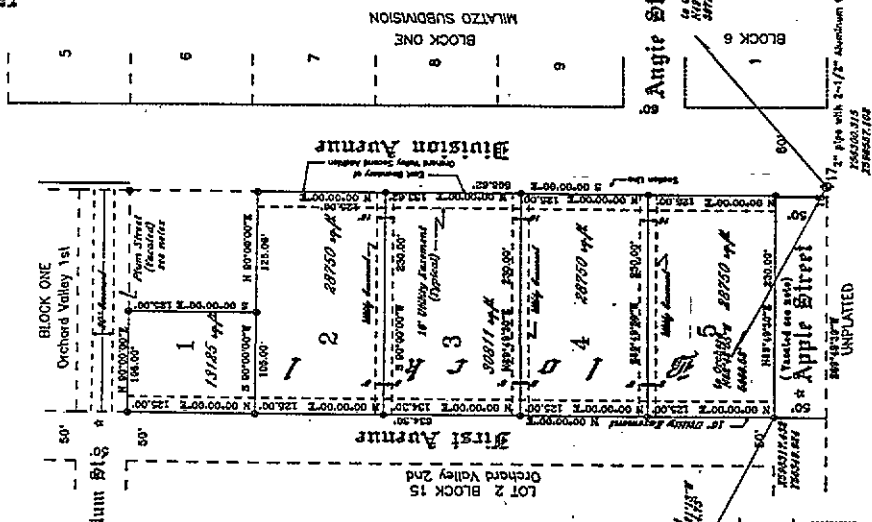
Kathy B. Anderson
City Clerk

Recorded as directed by the development director on 5 MAR 99



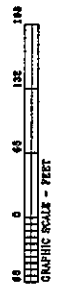
Site Map & Control Diagram

**WATER AND WASTE WATER SERVICE BY SOUTH CHEYENNE WATER AND SEWER DISTRICT
FIRE PROTECTION BY FIRE DISTRICT NUMBER ONE**



Conversions
From International System of Units (SI) to American Standard
One Foot = 0.3048 Meter
One Acre = 0.4047 Hectare

Note: With the approval of Public Law 94-185 as signed into law in 1975, the Metric Conversion is required as One Foot = 0.3048 Meter



Orchard East
a Replat of
A Portion of
Lot 1 of Block 16

Orchard Valley Second Addition
Situated in
SE 1/4 of NE 1/4 of Section 18
T.13 N. of R.66 W. of the 6th P.M.

Laramie County Surveying & Mapping Co.
1187 Terry Ranch Road
Cheyenne, Wyoming
82007

This plat is subject to the provisions of the laws of Wyoming relating to the same and the same shall be subject to the same laws and regulations as if it were a plat or certificate.

Recording Stamp
The State of Wyoming
County of Laramie
Recorded in the office of the County Clerk of the County of Laramie, Wyoming, on the _____ day of _____, 19____, and the same is a true and correct copy of the original plat as the same appears on the records of the County Clerk of the County of Laramie, Wyoming.