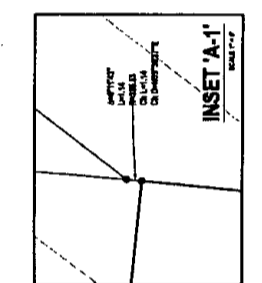
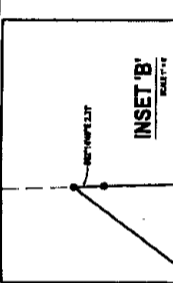
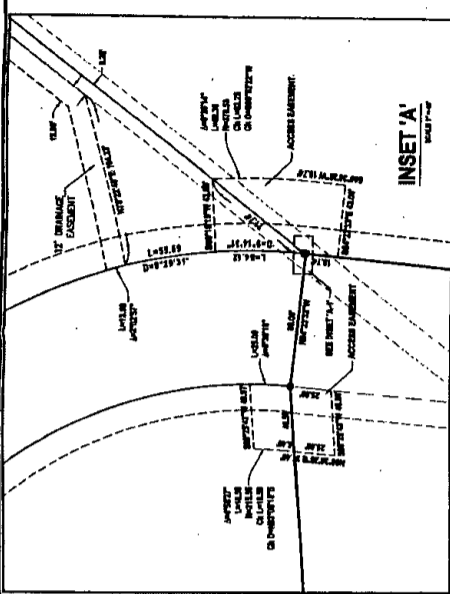


| NO. | REVISION | DATE |
|-----|----------|------|
|     |          |      |
|     |          |      |
|     |          |      |

GRANITE PEAK DEVELOPMENT  
 1300 VENTURE WAY  
 CASPER WY, 82609

PROJECT: OVERLAND TRAILS BUSINESS PARK  
 2ND FILING  
 DRAWING TITLE: ADMINISTRATIVE PLAT

|                       |                         |                |                |
|-----------------------|-------------------------|----------------|----------------|
| DATE: 04/15/14        | DATE: 04/15/14          | DATE: 04/15/14 | DATE: 04/15/14 |
| DRAWN BY: [Signature] | CHECKED BY: [Signature] | DATE: 04/15/14 | DATE: 04/15/14 |
| JOB NO.: 2-3215       | PROJECT NO.:            | DATE: 04/15/14 | DATE: 04/15/14 |



**ACKNOWLEDGEMENTS**  
 STATE OF WYOMING: [Signature]  
 COUNTY OF LARAMIE: [Signature]

**APPROVALS**  
 APPROVED BY THE CITY OF CASPER PLANNING & DEVELOPMENT DIRECTOR THE 12th DAY OF March, 2014  
 APPROVED BY THE CITY OF CASPER CITY ENGINEER THE 12th DAY OF March, 2014

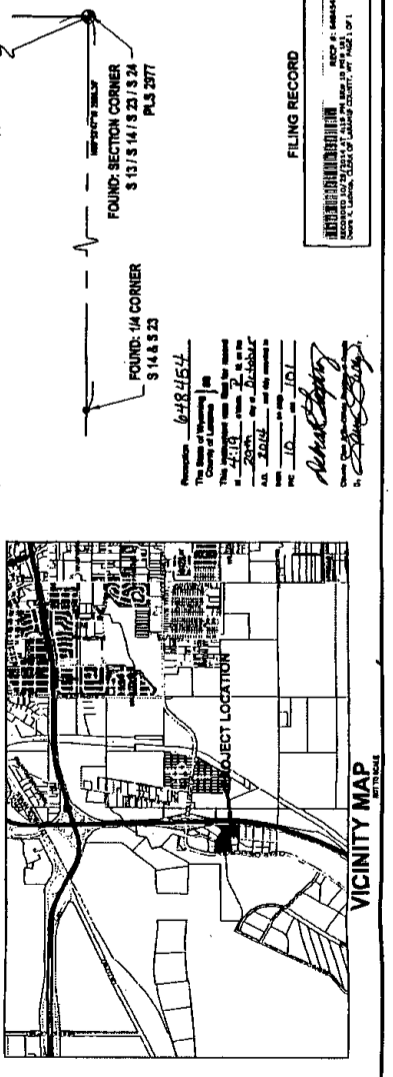
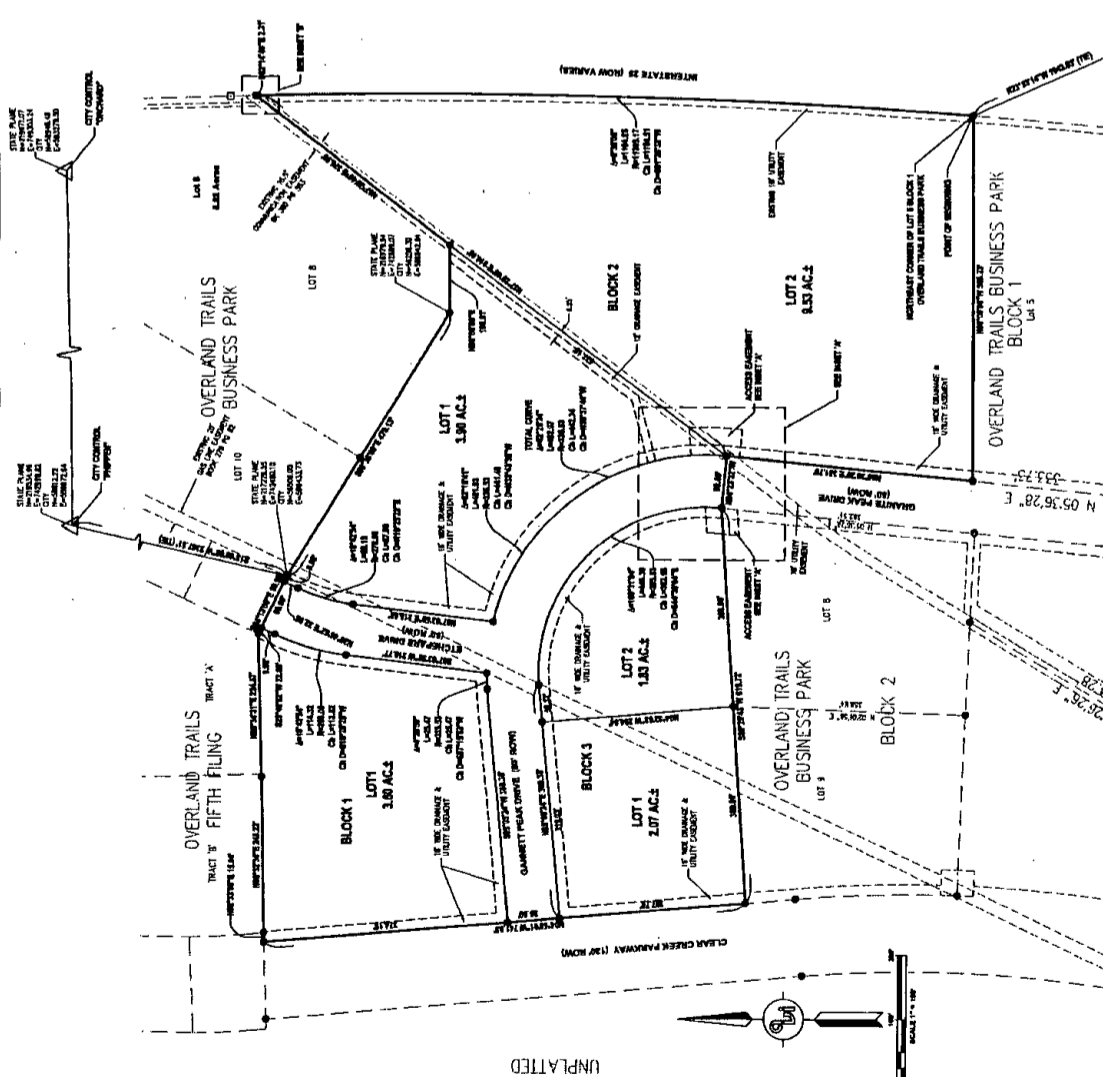
**LEGAL DESCRIPTION**  
 BEING ALL THAT PART OF THE SOUTHWEST CORNER OF LOT 1 BLOCK 1 (OVERLAND TRAILS BUSINESS PARK) A SUBDIVISION BEING PLATTED IN SECTION 14, TOWNSHIP 13 NORTH, RANGE 65 WEST OF THE 6TH PRINCIPAL MERIDIAN, LARAMIE COUNTY, WYOMING.

**LEGAL DESCRIPTION**  
 BEING ALL THAT PART OF THE SOUTHWEST CORNER OF LOT 1 BLOCK 1 (OVERLAND TRAILS BUSINESS PARK) A SUBDIVISION BEING PLATTED IN SECTION 14, TOWNSHIP 13 NORTH, RANGE 65 WEST OF THE 6TH PRINCIPAL MERIDIAN, LARAMIE COUNTY, WYOMING.

**ACKNOWLEDGEMENTS**  
 STATE OF WYOMING: [Signature]  
 COUNTY OF LARAMIE: [Signature]

**APPROVALS**  
 APPROVED BY THE CITY OF CASPER PLANNING & DEVELOPMENT DIRECTOR THE 12th DAY OF March, 2014  
 APPROVED BY THE CITY OF CASPER CITY ENGINEER THE 12th DAY OF March, 2014

**ADMINISTRATIVE PLAT**  
 FOR  
**OVERLAND TRAILS BUSINESS PARK**  
**SECOND FILING**  
 A REPLAY OF LOTS 4, 5, 6, 7, 8, 9, 10, 11 OF BLOCK 2, AND LOT 1 OF BLOCK 3 OF OVERLAND TRAILS BUSINESS PARK BEING SITUATED IN PORTIONS OF SECTION 14, TOWNSHIP 13 NORTH, RANGE 65 WEST OF THE SIXTH PRINCIPAL MERIDIAN, LARAMIE COUNTY, WYOMING.  
 PREPARED APRIL 2014



**LEGAL DESCRIPTION**  
 BEING ALL THAT PART OF THE SOUTHWEST CORNER OF LOT 1 BLOCK 1 (OVERLAND TRAILS BUSINESS PARK) A SUBDIVISION BEING PLATTED IN SECTION 14, TOWNSHIP 13 NORTH, RANGE 65 WEST OF THE 6TH PRINCIPAL MERIDIAN, LARAMIE COUNTY, WYOMING.

**LEGAL DESCRIPTION**  
 BEING ALL THAT PART OF THE SOUTHWEST CORNER OF LOT 1 BLOCK 1 (OVERLAND TRAILS BUSINESS PARK) A SUBDIVISION BEING PLATTED IN SECTION 14, TOWNSHIP 13 NORTH, RANGE 65 WEST OF THE 6TH PRINCIPAL MERIDIAN, LARAMIE COUNTY, WYOMING.

**LEGAL DESCRIPTION**  
 BEING ALL THAT PART OF THE SOUTHWEST CORNER OF LOT 1 BLOCK 1 (OVERLAND TRAILS BUSINESS PARK) A SUBDIVISION BEING PLATTED IN SECTION 14, TOWNSHIP 13 NORTH, RANGE 65 WEST OF THE 6TH PRINCIPAL MERIDIAN, LARAMIE COUNTY, WYOMING.

**LEGAL DESCRIPTION**  
 BEING ALL THAT PART OF THE SOUTHWEST CORNER OF LOT 1 BLOCK 1 (OVERLAND TRAILS BUSINESS PARK) A SUBDIVISION BEING PLATTED IN SECTION 14, TOWNSHIP 13 NORTH, RANGE 65 WEST OF THE 6TH PRINCIPAL MERIDIAN, LARAMIE COUNTY, WYOMING.

**LEGAL DESCRIPTION**  
 BEING ALL THAT PART OF THE SOUTHWEST CORNER OF LOT 1 BLOCK 1 (OVERLAND TRAILS BUSINESS PARK) A SUBDIVISION BEING PLATTED IN SECTION 14, TOWNSHIP 13 NORTH, RANGE 65 WEST OF THE 6TH PRINCIPAL MERIDIAN, LARAMIE COUNTY, WYOMING.

**LEGAL DESCRIPTION**  
 BEING ALL THAT PART OF THE SOUTHWEST CORNER OF LOT 1 BLOCK 1 (OVERLAND TRAILS BUSINESS PARK) A SUBDIVISION BEING PLATTED IN SECTION 14, TOWNSHIP 13 NORTH, RANGE 65 WEST OF THE 6TH PRINCIPAL MERIDIAN, LARAMIE COUNTY, WYOMING.

**LEGAL DESCRIPTION**  
 BEING ALL THAT PART OF THE SOUTHWEST CORNER OF LOT 1 BLOCK 1 (OVERLAND TRAILS BUSINESS PARK) A SUBDIVISION BEING PLATTED IN SECTION 14, TOWNSHIP 13 NORTH, RANGE 65 WEST OF THE 6TH PRINCIPAL MERIDIAN, LARAMIE COUNTY, WYOMING.

**LEGAL DESCRIPTION**  
 BEING ALL THAT PART OF THE SOUTHWEST CORNER OF LOT 1 BLOCK 1 (OVERLAND TRAILS BUSINESS PARK) A SUBDIVISION BEING PLATTED IN SECTION 14, TOWNSHIP 13 NORTH, RANGE 65 WEST OF THE 6TH PRINCIPAL MERIDIAN, LARAMIE COUNTY, WYOMING.

UNPLATTED

FILING RECORD

SEARCHED INDEXED  
 SERIALIZED FILED  
 APR 15 2014  
 LARAMIE COUNTY, WYOMING

VICINITY MAP

PROJECT LOCATION