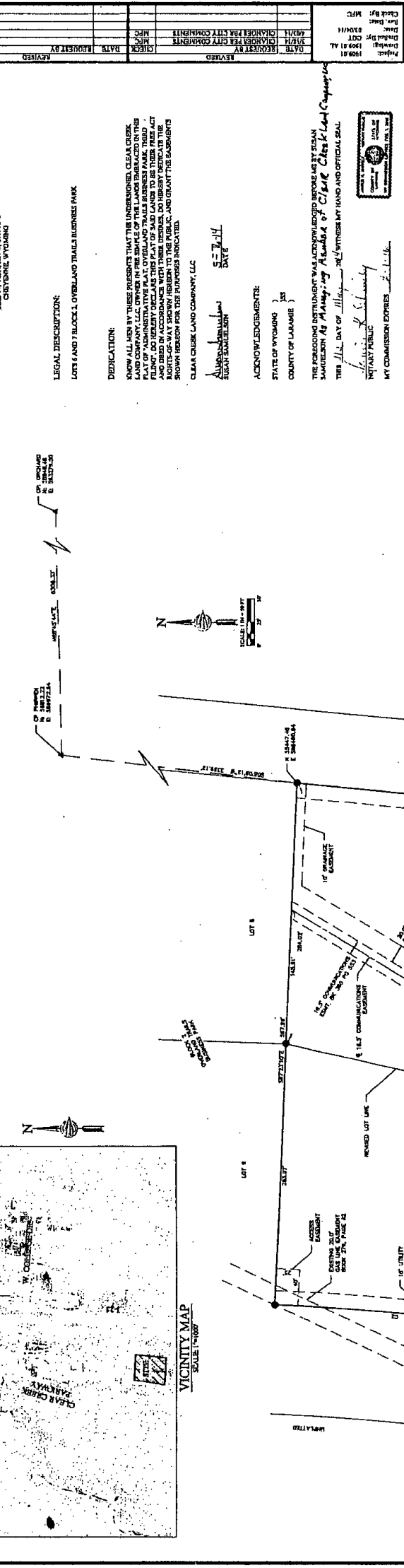


ADMINISTRATIVE PLAT OVERLAND TRAILS BUSINESS PARK, THIRD FILING A REPLAT OF LOTS 6 & 7, OVERLAND TRAILS BUSINESS PARK CHEYENNE, WYOMING



VICINITY MAP
SCALE 1"=1000'

LEGAL DESCRIPTION:
LOTS 6 AND 7 BLOCK 1, OVERLAND TRAILS BUSINESS PARK

DEDICATION:
KNOW ALL MEN BY THESE PRESENTS THAT THE UNDERSIGNED, CLEAR CREEK LAND COMPANY, LLC, OWNER IN THE SEVERALTY OF THE LAND DESCRIBED IN THIS PLAT, DO HEREBY DECLARE THIS PLAT OF SAID LANDS TO BE THEIR FREE ACT AND DEED IN ACCORDANCE WITH THEIR OBLIGATIONS, AND GRANT THE UNDERSIGNED KNOWS THE REASONS FOR THE REASONS INDICATED.

ACKNOWLEDGMENTS:
STATE OF WYOMING)
COUNTY OF LARAMIE)

APPROVALS:
APPROVED BY THE CITY OF CHEYENNE PLANNING & DEVELOPMENT DIRECTOR
THIS 31ST DAY OF MARCH 2014
PLANNING & DEVELOPMENT DIRECTOR, CITY OF CHEYENNE, WYOMING
APPROVED BY THE CITY OF CHEYENNE CITY ENGINEER
THIS 31ST DAY OF MARCH 2014
CITY ENGINEER, CITY OF CHEYENNE, WYOMING

ACKNOWLEDGMENTS:
STATE OF WYOMING)
COUNTY OF LARAMIE)

FILING RECORD

DATE	REASON FOR REVISION
10/24/13	REVISION #1
10/24/13	REVISION #2
10/24/13	REVISION #3
10/24/13	REVISION #4
10/24/13	REVISION #5
10/24/13	REVISION #6
10/24/13	REVISION #7
10/24/13	REVISION #8
10/24/13	REVISION #9
10/24/13	REVISION #10
10/24/13	REVISION #11
10/24/13	REVISION #12
10/24/13	REVISION #13
10/24/13	REVISION #14
10/24/13	REVISION #15
10/24/13	REVISION #16
10/24/13	REVISION #17
10/24/13	REVISION #18
10/24/13	REVISION #19
10/24/13	REVISION #20

ADMINISTRATIVE PLAT
OVERLAND TRAILS BUSINESS PARK, THIRD FILING
A REPLAT OF LOTS 6 & 7, OVERLAND TRAILS BUSINESS PARK
CHEYENNE, WYOMING

RECORD INFORMATION
RECORDED IN THE PUBLIC RECORDS OF THE COUNTY OF LARAMIE, WYOMING
BOOK 117, PAGE 147

LEGEND:
● 20' BOUNDARY CAP STAMPED PLS 555 OR 605 SHOW
▲ CONTROL BENCHMARK - AS DEPICTED
(CITY) CITY OF CHEYENNE COORDINATES

BASE OF RECORDS STATEMENT
THIS PLAT IS BASED ON THE RECORDS OF THE COUNTY OF LARAMIE, WYOMING, AS DEPICTED ON THE ORIGINAL SURVEY INSTRUMENTS WHICH ARE ON FILE IN THE PUBLIC RECORDS OF THE COUNTY OF LARAMIE, WYOMING.

REVISIONS:
1. 10/24/13 - REVISION #1
2. 10/24/13 - REVISION #2
3. 10/24/13 - REVISION #3
4. 10/24/13 - REVISION #4
5. 10/24/13 - REVISION #5
6. 10/24/13 - REVISION #6
7. 10/24/13 - REVISION #7
8. 10/24/13 - REVISION #8
9. 10/24/13 - REVISION #9
10. 10/24/13 - REVISION #10
11. 10/24/13 - REVISION #11
12. 10/24/13 - REVISION #12
13. 10/24/13 - REVISION #13
14. 10/24/13 - REVISION #14
15. 10/24/13 - REVISION #15
16. 10/24/13 - REVISION #16
17. 10/24/13 - REVISION #17
18. 10/24/13 - REVISION #18
19. 10/24/13 - REVISION #19
20. 10/24/13 - REVISION #20

ACKNOWLEDGMENTS:
STATE OF WYOMING)
COUNTY OF LARAMIE)

ACKNOWLEDGMENTS:
STATE OF WYOMING)
COUNTY OF LARAMIE)

ACKNOWLEDGMENTS:
STATE OF WYOMING)
COUNTY OF LARAMIE)

ACKNOWLEDGMENTS:
STATE OF WYOMING)
COUNTY OF LARAMIE)

ACKNOWLEDGMENTS:
STATE OF WYOMING)
COUNTY OF LARAMIE)

ACKNOWLEDGMENTS:
STATE OF WYOMING)
COUNTY OF LARAMIE)

ACKNOWLEDGMENTS:
STATE OF WYOMING)
COUNTY OF LARAMIE)

ACKNOWLEDGMENTS:
STATE OF WYOMING)
COUNTY OF LARAMIE)

ACKNOWLEDGMENTS:
STATE OF WYOMING)
COUNTY OF LARAMIE)

ACKNOWLEDGMENTS:
STATE OF WYOMING)
COUNTY OF LARAMIE)

ACKNOWLEDGMENTS:
STATE OF WYOMING)
COUNTY OF LARAMIE)

ACKNOWLEDGMENTS:
STATE OF WYOMING)
COUNTY OF LARAMIE)

ACKNOWLEDGMENTS:
STATE OF WYOMING)
COUNTY OF LARAMIE)

ACKNOWLEDGMENTS:
STATE OF WYOMING)
COUNTY OF LARAMIE)

ACKNOWLEDGMENTS:
STATE OF WYOMING)
COUNTY OF LARAMIE)

ACKNOWLEDGMENTS:
STATE OF WYOMING)
COUNTY OF LARAMIE)

ACKNOWLEDGMENTS:
STATE OF WYOMING)
COUNTY OF LARAMIE)

ACKNOWLEDGMENTS:
STATE OF WYOMING)
COUNTY OF LARAMIE)

ACKNOWLEDGMENTS:
STATE OF WYOMING)
COUNTY OF LARAMIE)

ACKNOWLEDGMENTS:
STATE OF WYOMING)
COUNTY OF LARAMIE)

ACKNOWLEDGMENTS:
STATE OF WYOMING)
COUNTY OF LARAMIE)

ACKNOWLEDGMENTS:
STATE OF WYOMING)
COUNTY OF LARAMIE)

ACKNOWLEDGMENTS:
STATE OF WYOMING)
COUNTY OF LARAMIE)

ACKNOWLEDGMENTS:
STATE OF WYOMING)
COUNTY OF LARAMIE)

ACKNOWLEDGMENTS:
STATE OF WYOMING)
COUNTY OF LARAMIE)

ACKNOWLEDGMENTS:
STATE OF WYOMING)
COUNTY OF LARAMIE)

ACKNOWLEDGMENTS:
STATE OF WYOMING)
COUNTY OF LARAMIE)

ACKNOWLEDGMENTS:
STATE OF WYOMING)
COUNTY OF LARAMIE)