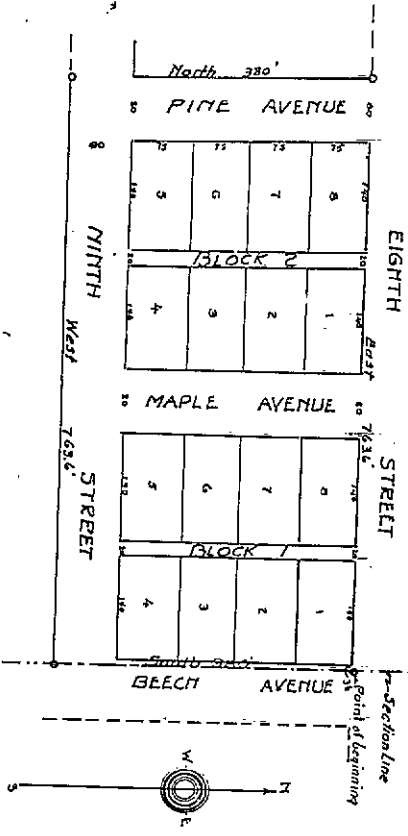


7111 Addition
North
PINE AVENUE
EIGHTH
Maple Avenue
STREET
BEECH AVENUE
7121 Addition
Doris
Addition



ENGINEER'S CERTIFICATE

The State of Wyoming) ss.
I, Frank H. Loring, Engineer,
do hereby certify that this plat of PINE VIEW ADDITION TO THE TOWN OF PINE BLUFFS
was prepared and filed in accordance with the provisions of the act to amend the act of October 1933, that said plat occupying eight (8) acres and
that the lots shown hereon are more or less bounded on the ground by iron pipe set at an interval of 33 1/2 feet, the corners
and that the lot and corner bearings are as shown on the ground by iron pipe set at an interval of 33 1/2 feet, the corners
adjoining to and south of the south line of Eighth Street in the town of Pine Bluffs, Wyoming, containing 8.65 acres and being bounded
on the north by a point on the east line of said Section 19 is a distance of 324.4 feet south of the E.W. corner of said Section 19, and
along the east line of said Section 19 a distance of 330.0 feet from the E.W. corner of said Section 19, parallel to the south line of said Eighth Street a
distance of 330.0 feet to a point, thence North parallel to the east line of said Eighth Street a distance of 330.0 feet to a point on the south line of said
Eighth Street, thence West, along the south line of said Eighth Street, a distance of 735.3 feet to the point of beginning.

Frank H. Loring
Engineer Exp. '19

DEDICATION

Now willing by these persons, that Ernest W. Corporation owner in fee simple of the land embraced in this plat and description of
the same, do hereby dedicate the subdivision of said land for the use of the State of Wyoming and the Town of Pine Bluffs
in accordance with the provisions of the act to amend the act of October 1933, that said plat occupying eight (8) acres and
witness my hand and seal of my office this 21st day of December, 1935.

Ernest W. Corporation

ACKNOWLEDGMENT

The State of Wyoming)
County of Laramie, ss. I, Ernest W. Corporation, do hereby acknowledge before me a Notary Public in and for the State of Wyoming, personally appeared
Ernest W. Corporation, the person described in and who executed the within and foregoing dedication and set
the same before me in full view of my face and of other the said day and year first above written.
My commission expires January 1st 1937 737271

Ernest W. Corporation
Notary Public in and for
the State of Wyoming

PINE VIEW ADDITION
TO THE
TOWN OF PINE BLUFFS
LARAMEE COUNTY WYOMING
Scale 1" = 100'
December 1935

APPROVAL

Approved by the Board of Public Safety of the Town of Pine Bluffs Wyoming,
this 21st day of December, 1935.
Alvin N. Curtis
Mayor
Approved by the Board of Public Safety of Laramie County,
this 21st day of December, 1935.
Det. [Signature]
Commissioner

