

REFUSED WATER SOURCE FROM DOMESTIC WELL,
SEWAGE DISPOSAL AND TREATMENT BY SEPTIC TANK
AND DRAINFIELD

FIRE PROTECTION PROVIDED BY FIRE DISTRICT NO. 6

DEDICATION
WHEREAS THE PREMISES HEREIN ARE THAT MARY ANN DUBLEY, OWNER IN FEE WHOLE OF A PORTION OF THE NORTHWEST QUARTER OF SECTION 6, TOWNSHIP 14 NORTH, RANGE 4 WEST, SIXTH PRINCIPAL MERIDIAN, LARAMIE COUNTY, WYOMING, BEING MORE PARTICULARLY DESCRIBED IN THE LEGAL DESCRIPTION HEREON, HAS CAUSED THE SAME TO BE CONVEYED TO THE PUBLIC FOR THE USE AND BENEFIT OF THE SUBDIVISION AND BIDS HEREBY DECLARED THAT SAID LAND APPEARS ON THIS PLAN TO BE HER FREE ACT AND DEED AND IN ACCORDANCE WITH HER DESIRES AND DOES HEREBY GRANT TO THE PUBLIC FOREVER, THE ACCESS ROAD EASEMENT AS SHOWN HEREON.

Mary Ann Dubley
MARY ANN DUBLEY, OWNER

ACKNOWLEDGEMENT
STATE OF WYOMING SS
LARAMIE COUNTY

THIS DEDICATION INSTRUMENT WAS ACKNOWLEDGED BEFORE ME THIS 20th DAY OF December, 2005 BY MARY ANN DUBLEY, OWNER



NOTARY PUBLIC, LARAMIE COUNTY, WYOMING
MY COMMISSION EXPIRES February 4, 2007

APPROVED

APPROVED BY THE CHEYENNE-LARAMIE COUNTY REGIONAL PLANNING COMMISSION THIS 17th DAY OF August, 2005.

R. O. ...
DEVELOPMENT DIRECTOR

APPROVED BY THE CHEYENNE-LARAMIE COUNTY BOARD OF COMMISSIONERS THIS 17th DAY OF August, 2005.
Attest: ...
COUNTY CLERK

CERTIFICATE OF SURVEYOR

I, Michael J. Conradi, a Registered Professional Land Surveyor in the State of Wyoming, do hereby certify that this preliminary plat of "Planting Seeds" Subdivision was prepared from notes taken during an actual survey made by me in June, 2005, that this plat, to the best of my knowledge and belief, correctly and accurately represents said survey.



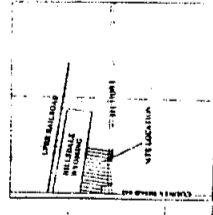
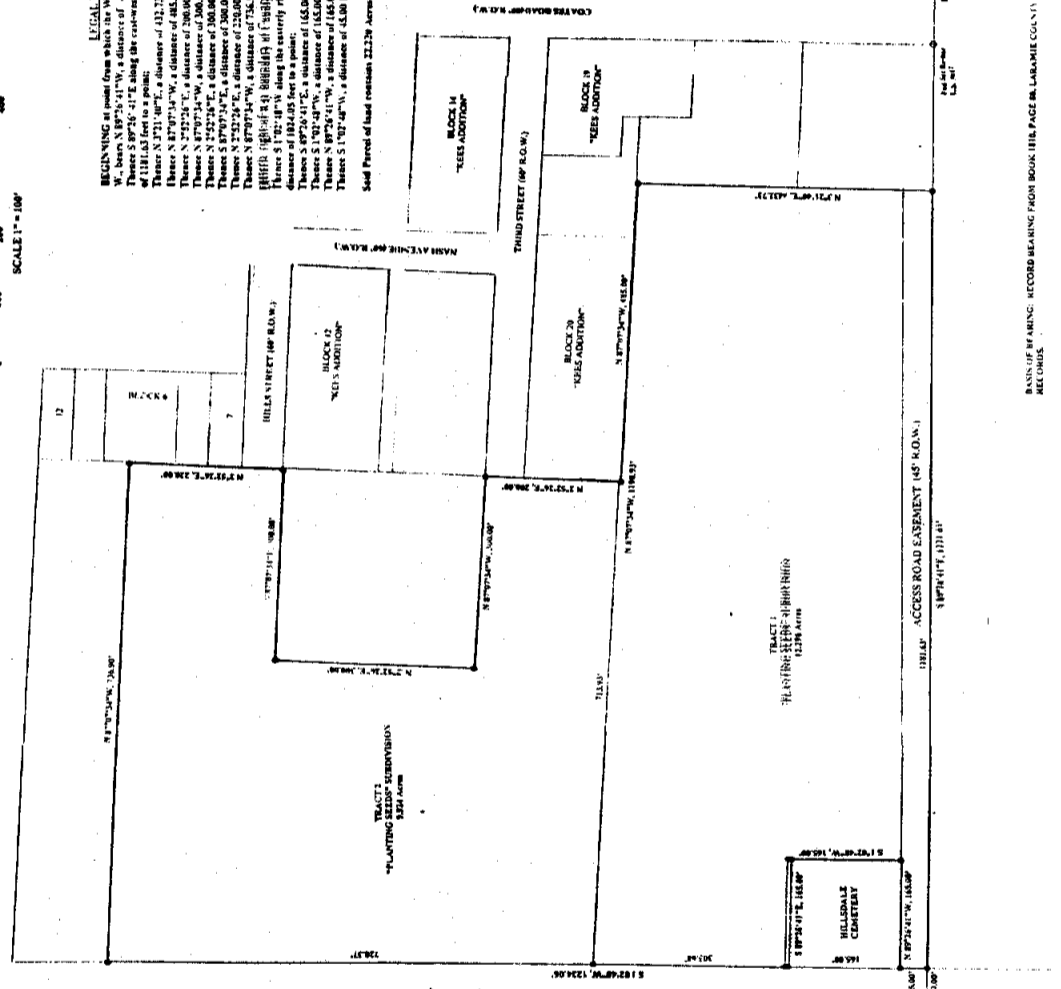
FINAL PLAT OF
"PLANTING SEEDS" SUBDIVISION
A SUBDIVISION OF A PORTION
OF THE NW ¼ OF SECTION 6,
T. 14N., R. 4W., 6TH P.M.,
LARAMIE COUNTY, WYOMING.

G&S SURVEYS
5211 OGDEN ROAD
CHEYENNE, WYOMING
(307) 637-7127
August 15, 2005



LEGAL DESCRIPTION

BEGINNING at a point from which the West Quarter Corner of Section 6, T. 14N., R. 4W. is 181.63 feet to the center of the corner of Section Line of Section 6, a distance of 181.63 feet to a point;
Thence S 89°24'41"E, a distance of 46.00 feet to a point;
Thence S 7°21'48"E, a distance of 112.71 feet to a point;
Thence S 87°07'14"W, a distance of 48.00 feet to a point;
Thence S 87°24'41"E, a distance of 48.00 feet to a point;
Thence S 87°24'41"E, a distance of 300.00 feet to a point;
Thence S 7°21'48"E, a distance of 300.00 feet to a point;
Thence S 87°07'14"W, a distance of 300.00 feet to a point;
Thence S 87°24'41"E, a distance of 220.00 feet to a point;
Thence S 87°07'14"W, a distance of 754.50 feet to the point of beginning with the bearing of 181.63 feet to a point;
Thence S 89°24'41"E, a distance of 163.00 feet to a point;
Thence S 7°21'48"E, a distance of 163.00 feet to a point;
Thence S 87°07'14"W, a distance of 163.00 feet to a point;
Thence S 1°27'48"W, a distance of 46.00 feet to the POINT OF BEGINNING.
Said Parcel of land contains 22.279 Acres more or less.



VICINITY MAP

RECORDING INFORMATION: RECORD BEARING FROM BOOK 118 PAGE 88, LARAMIE COUNTY RECORDS.

FILING RECORD
Receipt No. 438035
The State of Wyoming
County of Laramie
This document was filed for record on 8/15/05 at 11:15 AM in the Office of the County Clerk, Laramie County, Wyoming.
Notary Public: ...
County Clerk: ...

NOTICE: THIS IS A NO ZONED AREA OF LARAMIE COUNTY

SUBDIVISION SETUP FORM

Subdivision Proper Name PLANTING SEEDS SUBDIVISION

Received from MICHAEL GRONSKI

Grantor MARY ANN DUDLEY Document Date 11/15/05

Grantee IN RE PLANTING SEEDS SUBDIVISION

Legal Description M&B PTN NW4 SEC6 T14N R63W

SUBDIVISION INFORMATION

Short Alpha Name PLANTING SEEDS SUBD Number 2983

Block Name NONE Lot Name TRACT.

Replats Previous Platting Y/N Defunct Subdivision Y/N

Covenants Book/Page _____ Old Hard Copy Book/Number _____

ABSTRACTING INFORMATION

For suffix 40-69 (Existing Parcels Affected)

TWN/SUBD	RNG/BLOCK	BEGIN SEC/LOT	END SEC/LOT	R/V SW
<u>14</u>	<u>63</u>	<u>6</u>		

For suffix 70-99 (New Parcels Created)

BLOCK #	BEGIN LOT	END LOT	BLOCK #	BEGIN LOT	END LOT
<u>2983</u>	<u>NONE</u>	<u>1</u>	<u>2</u>		

020-045 (R12/01)