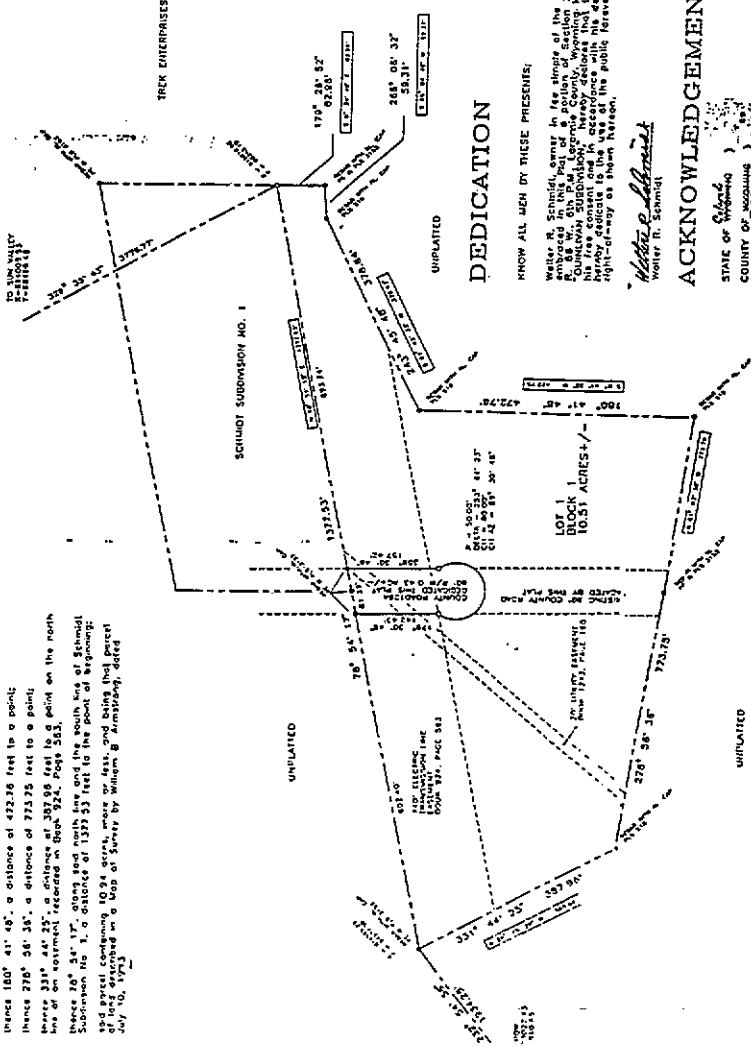


LAND DESCRIPTION

A tract of land in the SW 1/4 of Section 7, T. 13 N., R. 66 W., 6th P.M., Laramie County, Wyoming, being more particularly described as follows:
 Beginning at the southeast corner of Schmidt Subdivision No. 1;
 thence 179° 26' 37" (with all attempts being made) along the north and west sides of the City of Cheyenne Central Railway, by means of a traverse from "Coke" to "Sun Valley," a distance of 65.98 feet to a point;
 thence 288° 08' 33", a distance of 50.37 feet to a point;
 thence 345° 45' 49", a distance of 378.64 feet to a point;
 thence 180° 41' 48", a distance of 472.26 feet to a point;
 thence 278° 36' 36", a distance of 713.75 feet to a point;
 thence 331° 44' 25", a distance of 397.08 feet to a point on the north line of an railroad, recorded as Book 324, Page 243;
 thence 78° 34' 17", along said north line and the south line of Schmidt Subdivision No. 1, a distance of 1373.23 feet to the point of beginning;
 and a parcel containing 10.34 acres, more or less, and being that parcel first described in a Map of Survey by William B. Armstrong, dated July 10, 1923.

NO DOMESTIC WATER SUPPLY IS IMPOSED.
 "FIRE PROTECTION PROVIDED BY FIRE DISTRICT NO. 1"



STATEMENT OF SURVEYOR

I, William O. Brunner, a Professional Land Surveyor in the State of Wyoming, do hereby certify that I am the author of the above and that the same is a true and correct copy of the actual field notes made under my supervision and that the same represents the subdivision and communication of said land as shown on the attached map.

William O. Brunner
 Surveyor
 9-11-23

FILING RECORD
 7-19-23



DEDICATION

KNOW ALL MEN BY THESE PRESENTS,
 Walter H. Schmidt, owner in fee simple of the blocks R. 66 W. 6th P.M. of a portion of Section 7, T. 13 N., R. 66 W., 6th P.M., Laramie County, Wyoming, hereby declares that this tract is with hereby dedicated to the use of the public forever in the right-of-way as shown hereon.

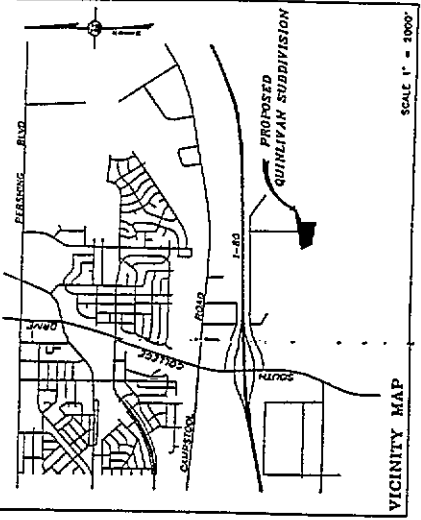
Walter H. Schmidt
 Walter H. Schmidt

ACKNOWLEDGEMENT

STATE OF WYOMING)
 COUNTY OF WOODRIDGE)
 I, the undersigned, Clerk of the County of Woodridge, Wyoming, do hereby certify that the within and foregoing act and deed was duly acknowledged and recorded in the office of the County Clerk of said County on the 19th day of July, 1923.

In witness whereof, I, the undersigned, Clerk of the County of Woodridge, Wyoming, do hereby set my hand and seal the 19th day of July, 1923.

Walter H. Brunner
 NOTARY PUBLIC
 Commission Expires 08-31-1924



NOTES

- 1.) BASIS OF SURVEY - CITY OF CHEYENNE CONTROL NETWORK.
- 2.) FOUND MONUMENT AS NOTED.
- 3.) THIS PLAT SERVES TO WACHTER'S ALUMINUM CAR. PLS. 368.
- 4.) AS SHOWN HEREON RECORD FROM MAP OF COUNTY ROAD 128A.
- 5.) RECORD FROM MAP OF COUNTY ROAD 128A.

APPROVALS

APPROVED BY THE CHEYENNE-STARBUCK COUNTY REGIONAL PLANNING COMMISSION THIS 15th DAY OF SEPTEMBER, 1923.

Walter H. Schmidt
 DEVELOPMENT DIRECTOR

APPROVED BY THE CITY COUNCIL OF THE CITY OF CHEYENNE WYOMING THIS 22nd DAY OF SEPTEMBER, 1923.

Walter H. Schmidt
 MAYOR

APPROVED BY THE BOARD OF COMMISSIONERS OF LARAMIE COUNTY, WYOMING, THIS 22nd DAY OF SEPTEMBER, 1923.

Walter H. Brunner
 CLERK

PROJECT 2832
 DATE 9/07/23
 SURVEYOR W.B. BRUNNER

INTERMOUNTAIN PROFESSIONAL SERVICES, INC.
 3001 DEACE AVENUE
 CHEYENNE, WYOMING 82009
 PH. (307) 632-3128 FAX. (307) 632-3194

PROJECT QUINLIVAN SUBDIVISION
 SHEET 1

FINAL PLAT OF
QUINLIVAN SUBDIVISION
 A PORTION OF THE SW 1/4,
 SECTION 7, T. 13 N., R. 66 W., 6th P.M.,
 LARAMIE COUNTY, WYOMING