

LAND DESCRIPTIONS

- PARCEL 1A
GOVERNMENT LOT 4,
SECTION 2, T.16N., R.67W.,
LARAME COUNTY, WYOMING.
- PARCEL 1B
GOVERNMENT LOT 3,
SECTION 2, T.16N., R.67W.,
LARAME COUNTY, WYOMING.
- PARCEL 1C
SW1/4SW1/4
SECTION 2, T.16N., R.67W.,
LARAME COUNTY, WYOMING.
- PARCEL 1D
SE1/4SW1/4
SECTION 2, T.16N., R.67W.,
LARAME COUNTY, WYOMING.
- PARCEL 1E
NW1/4SW1/4
SECTION 2, T.16N., R.67W.,
LARAME COUNTY, WYOMING.
- PARCEL 1F
SW1/4SW1/4
SECTION 2, T.16N., R.67W.,
LARAME COUNTY, WYOMING.
- PARCEL 1G
SE1/4SW1/4
SECTION 2, T.16N., R.67W.,
LARAME COUNTY, WYOMING.
- PARCEL 1H
NW1/4SW1/4
SECTION 2, T.16N., R.67W.,
LARAME COUNTY, WYOMING.
- PARCEL 1I
SW1/4SW1/4
SECTION 2, T.16N., R.67W.,
LARAME COUNTY, WYOMING.
- PARCEL 1J
SE1/4SW1/4
SECTION 2, T.16N., R.67W.,
LARAME COUNTY, WYOMING.
- PARCEL 1K
NW1/4SW1/4
SECTION 2, T.16N., R.67W.,
LARAME COUNTY, WYOMING.

EXCEPT THAT PORTION OF THE OLD YELLOWSTONE
HIGHWAY DESCRIBED AS FOLLOWS:
BEGINNING AT THE SOUTHWEST CORNER OF SECTION
2, T.16N., R.67W., S. 44° 36' 53"E., A DISTANCE OF 71.48 FEET THENCE
S. 44° 36' 53"E., A DISTANCE OF 100.72 FEET TO
THE SOUTH LINE OF SECTION 2, THENCE N. 89° 48'
27" 70.00 FEET TO THE POINT OF BEGINNING OF

SECTION 2, T.16N., R.67W.,
LARAME COUNTY, WYOMING.

SECTION 2, T.16N., R.67W.,
LARAME COUNTY, WYOMING.

SECTION 2, T.16N., R.67W.,
LARAME COUNTY, WYOMING.

SECTION 2, T.16N., R.67W.,
LARAME COUNTY, WYOMING.

SECTION 2, T.16N., R.67W.,
LARAME COUNTY, WYOMING.

SECTION 2, T.16N., R.67W.,
LARAME COUNTY, WYOMING.

SECTION 2, T.16N., R.67W.,
LARAME COUNTY, WYOMING.

SECTION 2, T.16N., R.67W.,
LARAME COUNTY, WYOMING.

SECTION 2, T.16N., R.67W.,
LARAME COUNTY, WYOMING.

SECTION 2, T.16N., R.67W.,
LARAME COUNTY, WYOMING.

SECTION 2, T.16N., R.67W.,
LARAME COUNTY, WYOMING.

SECTION 2, T.16N., R.67W.,
LARAME COUNTY, WYOMING.

SECTION 2, T.16N., R.67W.,
LARAME COUNTY, WYOMING.

SECTION 2, T.16N., R.67W.,
LARAME COUNTY, WYOMING.

SECTION 2, T.16N., R.67W.,
LARAME COUNTY, WYOMING.

SECTION 2, T.16N., R.67W.,
LARAME COUNTY, WYOMING.

SECTION 2, T.16N., R.67W.,
LARAME COUNTY, WYOMING.

SECTION 2, T.16N., R.67W.,
LARAME COUNTY, WYOMING.

SECTION 2, T.16N., R.67W.,
LARAME COUNTY, WYOMING.

SECTION 2, T.16N., R.67W.,
LARAME COUNTY, WYOMING.

SECTION 2, T.16N., R.67W.,
LARAME COUNTY, WYOMING.

SECTION 2, T.16N., R.67W.,
LARAME COUNTY, WYOMING.

SECTION 2, T.16N., R.67W.,
LARAME COUNTY, WYOMING.

SECTION 2, T.16N., R.67W.,
LARAME COUNTY, WYOMING.

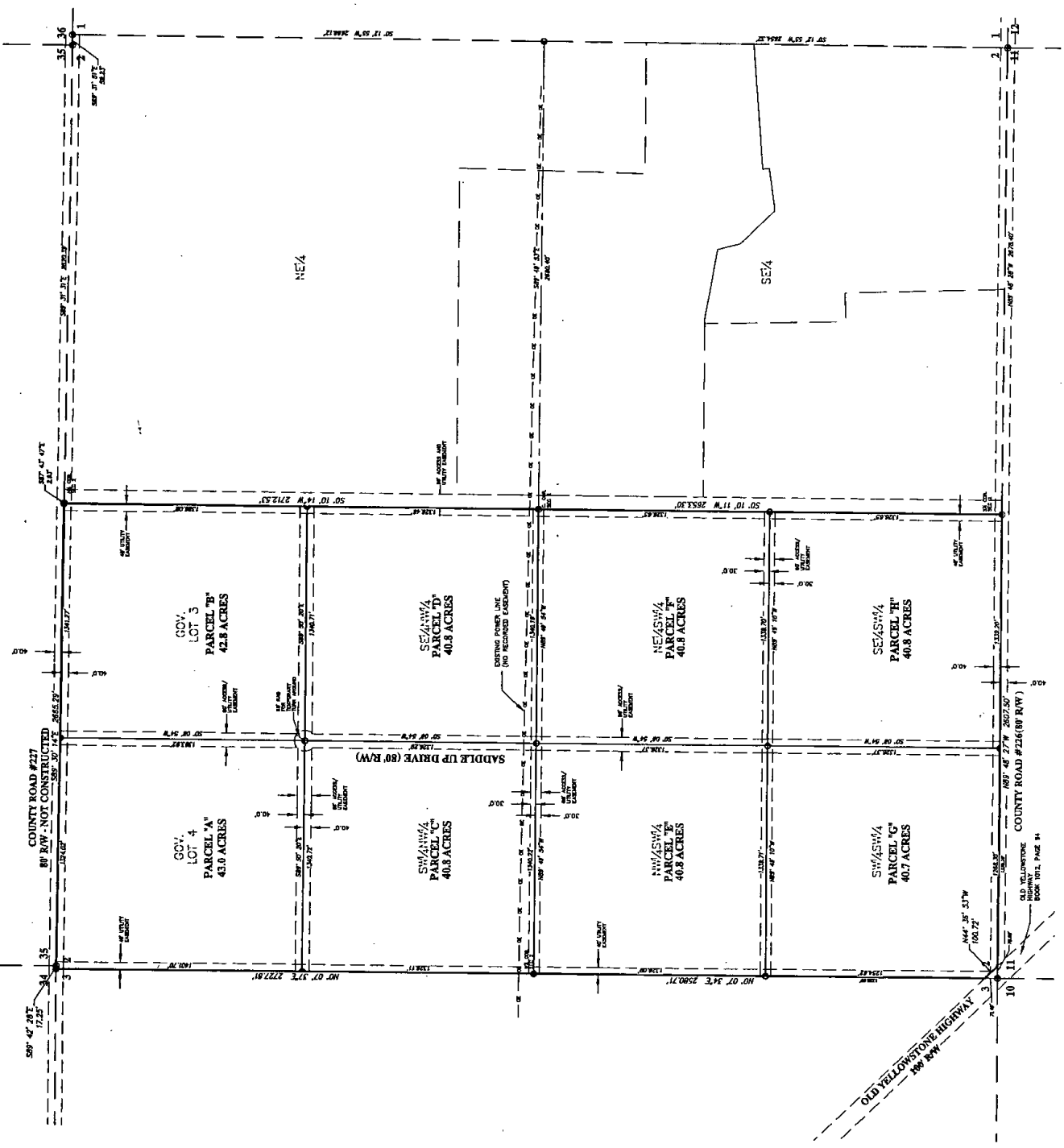
SECTION 2, T.16N., R.67W.,
LARAME COUNTY, WYOMING.

SECTION 2, T.16N., R.67W.,
LARAME COUNTY, WYOMING.

SECTION 2, T.16N., R.67W.,
LARAME COUNTY, WYOMING.

SECTION 2, T.16N., R.67W.,
LARAME COUNTY, WYOMING.

SECTION 2, T.16N., R.67W.,
LARAME COUNTY, WYOMING.



CERTIFICATE OF SURVEYOR

I, Jeffrey B. Jones, Registered Professional Land Surveyor in the State of Wyoming, for and on behalf of Steel Surveying Services, LLC, hereby certify to the best of my knowledge, information and belief, that this map was prepared in accordance with the laws of Wyoming and the rules of the Board of Professional Land Surveyors and that the monuments found or set are as a result of said survey and that the monuments found or set are as shown.



**RECORD OF SURVEY
REFINEMENT "A"
FOR
R BAR H
RANCHES
OF**

A PORTION OF
SECTION 2, T.16N., R.67W.,
OF THE 6TH P.M.
LARAME COUNTY, WYOMING.
PREPARED MARCH, 2015

STEEL SURVEYING SERVICES, LLC
PROFESSIONAL LAND SURVEYORS
1102 W. 18th ST. CHERYANNE, WY. 82001 (307)684-7279
755 GILCHRIST ST. WHEATLAND, WY. 82201 (307)926-9769



SURVEY CABINET
DRAWN BY: [Signature]
SURVEYED BY: [Signature]

REC-4-87733
BOOK 216, PAGE 14
BOOK 216, PAGE 14

LEGEND

- 3/4" x 3/4" LONG REBAR WITH 2X ALUMINUM
- 1/2" x 1/2" ALUMINUM CAP STAMPED "S.E.L.S. 2015"
- 1/2" x 1/2" ALUMINUM CAP STAMPED "S.E.L.S. 2015"
- EXISTING OVERHEAD ELECTRIC LINES

