

**DEDICATION**

KNOW ALL PERSONS BY THESE PRESENTS THAT Cris P. Read, Revocable Trustee, a subdivision situated in the SW 1/4 of Section 18, Township 36 North, Range 6 East, Laraine County, Wyoming, more particularly described as follows:

Beginning at the southeast corner of said Tract 10; thence on an azimuth of 0°09'00" (grid azimuth) from said Tract 10 and the west line of Marshall Road, a distance of 451.19 feet to the northeast corner thereof; and the south line of Montclair Drive, a distance of 180°09'00", along the east line of said Hastings Addition, a distance of 594.07 feet to the southeast corner of said Tract 10 and the north line of Weaver Road, a distance of 180°09'00", along the east line of said Tract 10 and the north line of Skyline Drive, a distance of 181.50 feet to the point of beginning.

Has caused this deed to be executed, registered and become a READ ADDITION, does hereby declare the subdivision of said land as it appears on this plat, to be her free act and deed and in full compliance with the laws of Wyoming grant the easements for the purposes indicated herein.

Cris P. Read Revocable Trust

*Cris P. Read, Trustee*  
*Subdivided 10/23/1992*  
*and the dedication is*  
*in*

**ACKNOWLEDGEMENT**

STATE OF Wyoming }  
 COUNTY OF Sublette } SS

The duplication instrument was acknowledged before me this 14th day of October, 1992, by Cris P. Read, trustee for the Cris P. Read, Revocable Trust.

*Sharon A. Stell*  
 Notary Public, Notary Commission No. 0000000000  
 My Commission Expires 10/31/97

**APPROVALS**

Approved by the Cheyenne-Laraine County Regional Planning Commission this 5th day of October, 1992.

*Michael D. ...*  
 Development Director

Approved by the City Council of Cheyenne, Wyoming, this 24th day of October, 1992.

*John A. Stell*  
 ATTORNEY AT LAW  
 CITY CLERK

Approved by the Board of County Commissioners of Laraine County, Wyoming, this 5th day of October, 1992.

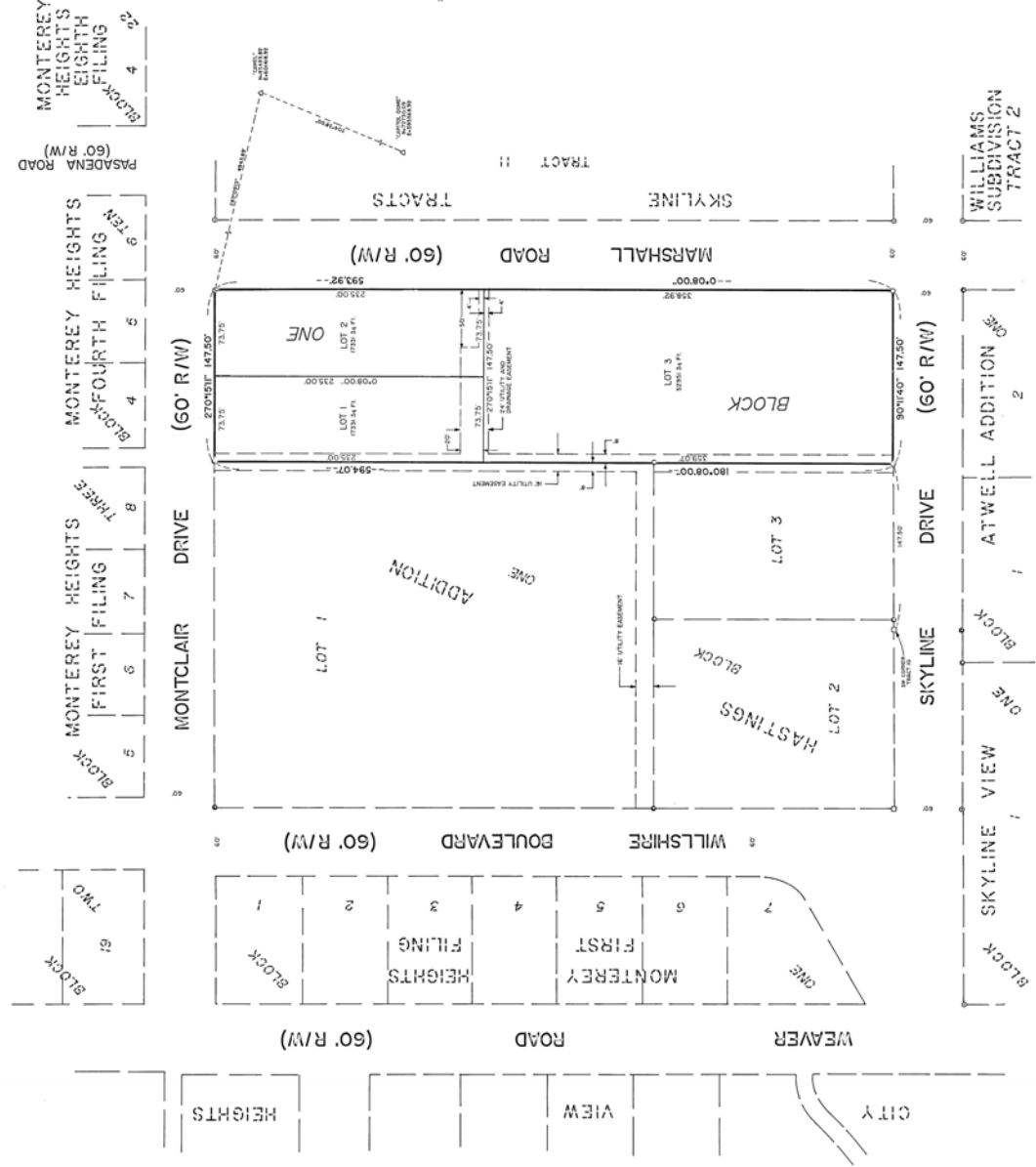
*John A. Stell*  
 COUNTY CLERK



**NOTES**

- 1. SEE PLAN FOR A COMPLETE LIST OF MONUMENTS.
- 2. FOUND 1/2" ALUMINUM CAP MARKED "A.L.S.K."
- 3. FOUND 1/2" IRON PIPE.
- 4. CITY OF CHEYENNE CONTROL MONUMENT.
- 5. MONUMENTS TO BE SET BY SURVEYOR.
- 6. MONUMENTS TO BE SET BY SURVEYOR.

U IRON PIPE  
 D 1/2" ALUMINUM CAP  
 O CITY OF CHEYENNE CONTROL MONUMENT  
 S SURVEYED MONUMENT  
 N NOT SHOWN



**SURVEYOR'S CERTIFICATE**

I, John A. Stell, Registered Professional Land Surveyor in the State of Wyoming, do hereby certify that the foregoing plat was prepared from official plats and deeds of record and from notes of a field survey conducted by me or under my direct supervision and that the same are true and correct to the best of my knowledge and belief and that this plat correctly represents said survey of the land shown hereon to the best of my knowledge.



**FILING RECORD**

This instrument was filed for record on this 14th day of October, 1992, at 10:00 AM in the office of the County Clerk of Laraine County, Wyoming, and the same was duly recorded in the public records of said county, Wyoming, in Book 100, Page 27.

**AZIMUTH**



**VICINITY MAP**

