

DEDICATION

KNOW ALL PERSONS BY THESE PRESENTS THAT: Max Padilla ET UX, owner in fee simple of Tract 4, Robitaille Subdivision, City of Cheyenne, Laramie County, Wyoming;

Has caused A PORTION OF the same, to be surveyed, vacated, replatted and known as ROBITAILLE SUBDIVISION, 4TH FILING, do hereby declare the subdivision of said land as it appears on this plat, to be their free act and deed and in accordance with their desires.

Max Padilla
Max Padilla
Charlene Padilla
Charlene Padilla

ACKNOWLEDGEMENT

STATE OF WYOMING)
)SS
COUNTY OF LARAMIE)

The foregoing instrument was acknowledged before me this 25th day of November, 2013, by Max Padilla and Charlene Padilla.

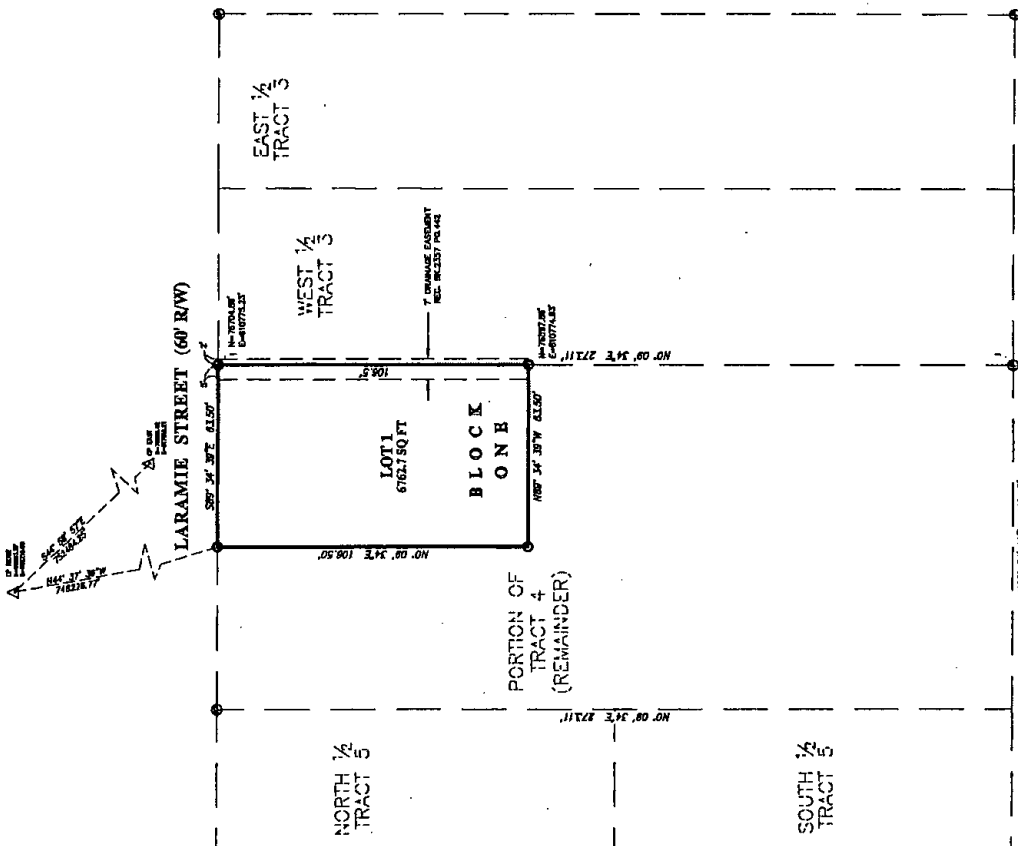
[Signature]
Notary Public, Laramie County, Wyoming
My Commission Expires: April 29, 2014

LEGEND

- SET 1/2" x 24" LONG REBAR WITH 1/2" ALUMINUM CAP STAMPED "SS P.L.S. 5910"
- FOUND 1/2" IRON PIPE
- ▲ CITY CONTROL MONUMENT

NOTES

- 1) BASIS OF BEARINGS - CITY OF CHEYENNE DATUM REFERENCED FROM CITY CONTROL MONUMENTS "RIDGE" & "EAST".
- 2) ALL LOT CORNERS, ANGLE POINTS AND CURVE POINTS TO BE MONUMENTED WITH A SET 1/2" x 24" ALUMINUM CAP STAMPED "SS P.L.S. 5910" ON A 1/2" x 24" LONG REBAR



APPROVALS

Approved by the City of Cheyenne Planning & Development Director this 25th day of November, 2013.

[Signature]
Planning & Development Director,
City of Cheyenne, Wyoming

Approved by the City Engineer of the City of Cheyenne, Wyoming this 25th day of November, 2013.

[Signature]
City Engineer, City of Cheyenne Wyoming



CERTIFICATE OF SURVEYOR

I, Jeffrey B. Jones, Registered Professional Land Surveyor in the State of Wyoming, for and on behalf of Steel Surveying Services, LLC, hereby state, to the best of my knowledge, information and belief, that this map was prepared from field notes taken under my direct supervision; and that this map correctly shows the results of said survey and that the monuments found or set are as shown.

**ROBITAILLE
SUBDIVISION
4TH FILING**

AN ADMINISTRATIVE REPLAT OF
A PORTION OF TRACT 4,
ROBITAILLE SUBDIVISION,
SITUATED IN PORTION OF THE SW1/4 OF
SECTION 27, T.14 NORTH, R.66 WEST
OF THE 6TH P.M. CITY OF CHEYENNE,
LARAMIE COUNTY, WYOMING.

PREPARED AUGUST 2013

STEEL SURVEYING SERVICES, LLC
PROFESSIONAL LAND SURVEYORS



1102 E. 19th St. Cheyenne, WY 82001 (307)534-2779
PO BOX 100201 ST. HELENA, WY 82402-0201

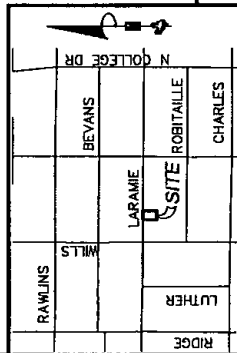
ACKNOWLEDGEMENT

STATE OF WYOMING)
)SS
COUNTY OF LARAMIE)

The foregoing instrument was acknowledged before me this 25th day of November, 2013, by Brandon Comarata and Bob Geringer, on behalf of the City of Cheyenne, Wyoming.

[Signature]
Notary Public, Laramie County, Wyoming
My Commission Expires: 12-21-15

VICINITY MAP



NOT TO SCALE

Reception 6,23,378
The State of Wyoming)
County of Laramie)
This instrument was filed for record
on 10/21 at 9:11 A.M. in the
office of the County Clerk on the
date of 10/21 2013 and the amount is
\$ 10 and the amount is
P.C. 10 and 6.1
[Signature]
County Clerk & Ex-Officio Register of Deeds
for Laramie County, Wyoming

FILING RECORD

RECORDED 11/27/2013 11:11 AM BY: SHERA BIL
BY: JAMES E. JENSEN - CLERK OF LARAMIE COUNTY, WYOMING