

**DEDICATION**  
 KNOW ALL PERSONS BY THESE PRESENTS THAT: SWEETGRASS LAND CO., LLC, owner in fee simple of Lots 100 & 200, Block 13, Sweetgrass, 8th Flng. AND a 581,911 square foot portion of section 16, Township 13 North, Range 68 West, 8th P.M. ALONG WITH:

THE CITY OF CHEYENNE, a Wyoming Municipality, owner in fee simple of Tract U, Sweetgrass, 2nd Flng. Hereby declares the above described parcels, to be surveyed, accepted, and dedicated to be known as **ROCKING A AT SWEETGRASS**, 8th Flng. and do hereby declare the dedication of said land as it appears on this plat, to be their free act and deed and in accordance with their statute and do hereby certify that the above described parcels have been surveyed and do furthermore grant the materials on sheets and described for the proposed dedication herein.

By: *[Signature]*  
 Kenneth Cahill, Mayor of the City of Cheyenne

**ACKNOWLEDGEMENTS**

STATE OF WYOMING }  
 COUNTY OF LARAMIE } ss  
 The foregoing instrument was acknowledged before me this 14th day of July, 2022,  
 by Daniel J. Williams, Esq., Registered Agent for Sweetgrass Land Co., LLC, a Wyoming Corporation,  
 My Commission Expires: 12/31/23

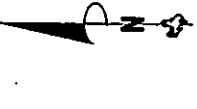


STATE OF WYOMING }  
 COUNTY OF LARAMIE } ss  
 The foregoing instrument was acknowledged before me this 14th day of July, 2022,  
 on behalf of the City of Cheyenne,  
 My Commission Expires: 1/16/27

*[Signature]*  
 Notary Public, Laramie County, Wyoming

**LEGEND**

- SET BY ALUMINUM CAP STAMPED THIS DATE 1897
- SET BY 1" WOODEN CAP STAMPED THIS DATE 1897
- FOUND BY WYOMING CAP STAMPED THIS DATE 1897
- FOUND BY L.S. L. BY FOUNDARY
- FOUND BY S.S. STONE
- CITY OF CHEYENNE CONTROL POINT
- DEDICATED OPEN SPACE / WAREHOUSE
- EXISTING PUBLIC OPEN SPACE / WAREHOUSE
- SWEETGRASS 1964 OPEN SPACE / WAREHOUSE (SEE NOTE 3.4)
- INTERNAL PRIVATE DEVELOPER OPEN SPACE (SEE NOTE 3.4)
- EXISTING PRIVATE DEVELOPER OPEN SPACE (SEE NOTE 3.4)
- EXISTING PRIVATE DEVELOPER OPEN SPACE (SEE NOTE 3.4)



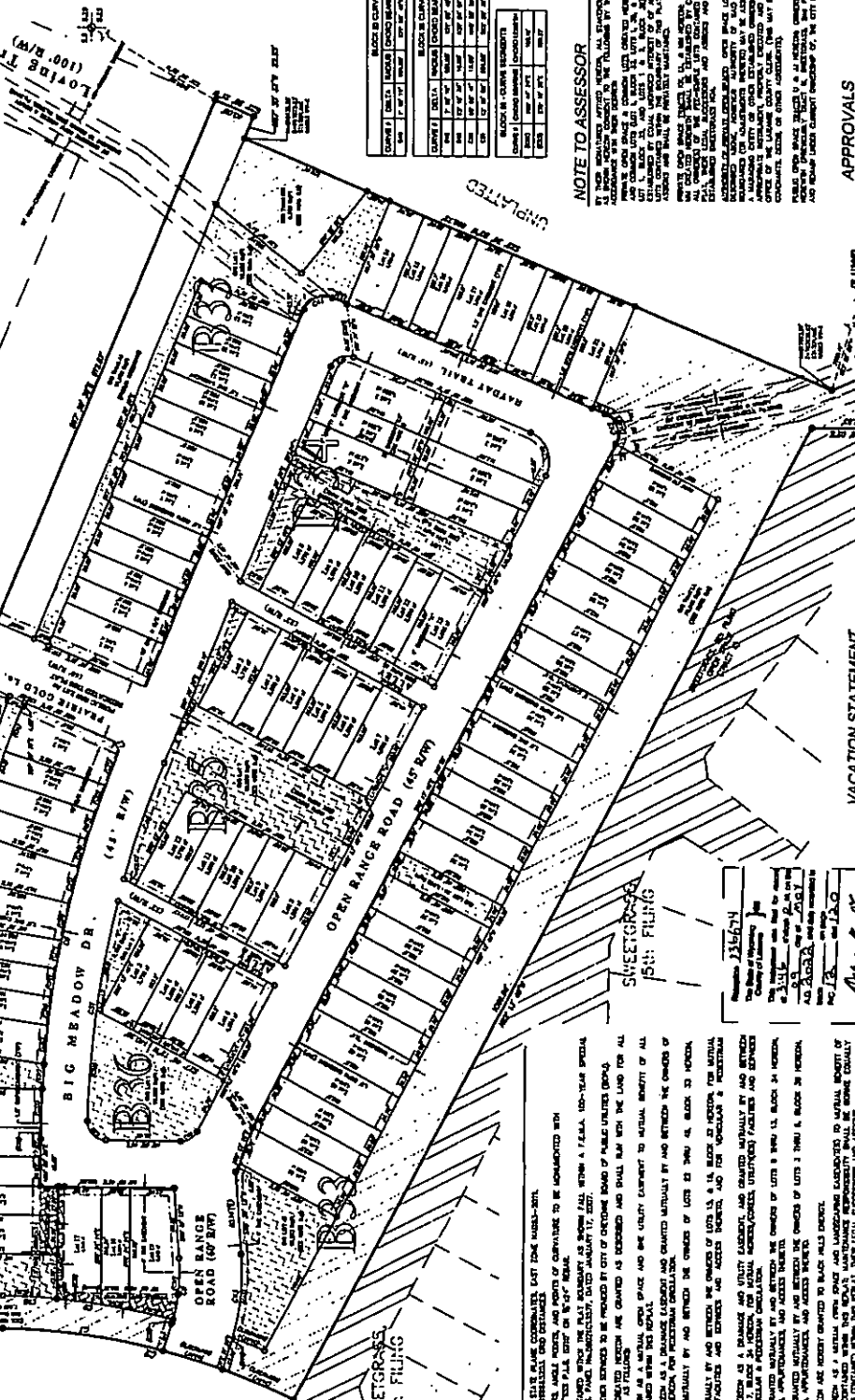
**ROCKING A**  
*Surveyors*  
 CHEYENNE, WYOMING

A REPORT OF  
 ALL OF LOTS 100 & 200, BLOCK 13, INCLUSIVE,  
 SWEETGRASS, 8TH FLING AND  
 ALL OF TRACT U, SWEETGRASS, 2ND FLING ALONG WITH  
 A 581,911 SQ FT PORTION OF ADJUTING UNPLATTED LANDS  
 SITUATED IN THE NE1/4 OF SECTION 16,  
 TOWNSHIP 13 NORTH, RANGE 68 WEST, 8TH P.M.  
 CITY OF CHEYENNE, LARAMIE COUNTY, WYOMING.

PREPARED NOVEMBER 2021  
**STEELE SURVEYING SERVICES, LLC**  
 PROFESSIONAL LAND SURVEYORS  
 PLANNING & DEVELOPMENT SPECIALISTS  
 1188 WEST 19th ST., CHEYENNE, WY. 82001 • (307) 624-1979  
 758 GILBERT ST., WHEATLAND, WY. 82201 • (307) 831-1979  
 www.steelesurveying.com • daniel@steelesurveying.com

**BLOCK 13 CURVE TABLE**

CURVE #	DELTA	CHORD BEARING	CHORD LENGTH	ARC LENGTH	AREA
1	171° 57' 47.39"	S 82° 02' 12.61" W	300.00	161.87	15,750.00
2	171° 57' 47.39"	S 82° 02' 12.61" W	300.00	161.87	15,750.00
3	171° 57' 47.39"	S 82° 02' 12.61" W	300.00	161.87	15,750.00



**NOTE TO ASSESSOR**

IN THE REALIZED INTEREST, ALL ENCUMBRANCES OF THE INTEREST IN THE LOTS AND TRACTS HEREIN, AS SHOWN ON THIS PLAT, ARE HEREBY RELEASED TO THE CITY OF CHEYENNE, WYOMING, BY THE CITY OF CHEYENNE, WYOMING, AS A CONDITION OF THE DEDICATION OF THE LOTS AND TRACTS HEREIN. THE CITY OF CHEYENNE, WYOMING, DOES NOT GUARANTEE THE ACCURACY OF THIS PLAT, NOR DOES IT WARRANT THE ACCURACY OF ANY INFORMATION CONTAINED THEREON, AND THE CITY OF CHEYENNE, WYOMING, DOES NOT ASSUME ANY LIABILITY FOR ANY DAMAGES, INCLUDING REASONABLE ATTORNEY'S FEES, INCURRED BY ANY PARTY AS A RESULT OF THE CITY OF CHEYENNE, WYOMING, PROVIDING THIS INFORMATION. THE CITY OF CHEYENNE, WYOMING, DOES NOT WARRANT THE ACCURACY OF ANY INFORMATION CONTAINED THEREON, AND THE CITY OF CHEYENNE, WYOMING, DOES NOT ASSUME ANY LIABILITY FOR ANY DAMAGES, INCLUDING REASONABLE ATTORNEY'S FEES, INCURRED BY ANY PARTY AS A RESULT OF THE CITY OF CHEYENNE, WYOMING, PROVIDING THIS INFORMATION.

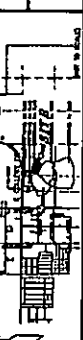
**APPROVALS**

Approved by the City of Cheyenne Planning Commission  
 this 14th day of July, 2022.  
 Approved by the Council of the City of Cheyenne, Wyoming  
 this 14th day of July, 2022.

**VACATION STATEMENT**

IT IS THE INTENT OF THE CITY OF CHEYENNE, WYOMING, TO VACATE ALL OF THE LOTS AND TRACTS HEREIN, AS SHOWN ON THIS PLAT, AND TO DEDICATE THE SAME TO THE PUBLIC USE OF THE CITY OF CHEYENNE, WYOMING.

**VICINITY MAP**



**WARRANTY CURVE TABLE**

CURVE #	DELTA	CHORD BEARING	CHORD LENGTH	ARC LENGTH	AREA
1	171° 57' 47.39"	S 82° 02' 12.61" W	300.00	161.87	15,750.00
2	171° 57' 47.39"	S 82° 02' 12.61" W	300.00	161.87	15,750.00
3	171° 57' 47.39"	S 82° 02' 12.61" W	300.00	161.87	15,750.00

**BLOCK 13 CURVE TABLE**

CURVE #	DELTA	CHORD BEARING	CHORD LENGTH	ARC LENGTH	AREA
1	171° 57' 47.39"	S 82° 02' 12.61" W	300.00	161.87	15,750.00
2	171° 57' 47.39"	S 82° 02' 12.61" W	300.00	161.87	15,750.00
3	171° 57' 47.39"	S 82° 02' 12.61" W	300.00	161.87	15,750.00

**LOT TABLE**

LOT #	AREA	PERCENTAGE
100	15,750.00	1.64%
200	15,750.00	1.64%

**NOTES**

- THE DEDICATION HEREIN IS IN FULL COMPLIANCE WITH THE WYOMING DEDICATION ACT.
- ALL UNDEVELOPED LOTS, TRACTS, AND PORTIONS OF TRACTS TO BE DEDICATED WITHIN THE CITY OF CHEYENNE, WYOMING, SHALL BE DEDICATED TO THE CITY OF CHEYENNE, WYOMING, AS A CONDITION OF THE DEDICATION OF THE LOTS AND TRACTS HEREIN.
- ALL LOTS AND TRACTS HEREIN SHALL BE DEDICATED TO THE CITY OF CHEYENNE, WYOMING, AS A CONDITION OF THE DEDICATION OF THE LOTS AND TRACTS HEREIN.
- ALL LOTS AND TRACTS HEREIN SHALL BE DEDICATED TO THE CITY OF CHEYENNE, WYOMING, AS A CONDITION OF THE DEDICATION OF THE LOTS AND TRACTS HEREIN.
- ALL LOTS AND TRACTS HEREIN SHALL BE DEDICATED TO THE CITY OF CHEYENNE, WYOMING, AS A CONDITION OF THE DEDICATION OF THE LOTS AND TRACTS HEREIN.
- ALL LOTS AND TRACTS HEREIN SHALL BE DEDICATED TO THE CITY OF CHEYENNE, WYOMING, AS A CONDITION OF THE DEDICATION OF THE LOTS AND TRACTS HEREIN.
- ALL LOTS AND TRACTS HEREIN SHALL BE DEDICATED TO THE CITY OF CHEYENNE, WYOMING, AS A CONDITION OF THE DEDICATION OF THE LOTS AND TRACTS HEREIN.
- ALL LOTS AND TRACTS HEREIN SHALL BE DEDICATED TO THE CITY OF CHEYENNE, WYOMING, AS A CONDITION OF THE DEDICATION OF THE LOTS AND TRACTS HEREIN.
- ALL LOTS AND TRACTS HEREIN SHALL BE DEDICATED TO THE CITY OF CHEYENNE, WYOMING, AS A CONDITION OF THE DEDICATION OF THE LOTS AND TRACTS HEREIN.
- ALL LOTS AND TRACTS HEREIN SHALL BE DEDICATED TO THE CITY OF CHEYENNE, WYOMING, AS A CONDITION OF THE DEDICATION OF THE LOTS AND TRACTS HEREIN.
- ALL LOTS AND TRACTS HEREIN SHALL BE DEDICATED TO THE CITY OF CHEYENNE, WYOMING, AS A CONDITION OF THE DEDICATION OF THE LOTS AND TRACTS HEREIN.
- ALL LOTS AND TRACTS HEREIN SHALL BE DEDICATED TO THE CITY OF CHEYENNE, WYOMING, AS A CONDITION OF THE DEDICATION OF THE LOTS AND TRACTS HEREIN.
- ALL LOTS AND TRACTS HEREIN SHALL BE DEDICATED TO THE CITY OF CHEYENNE, WYOMING, AS A CONDITION OF THE DEDICATION OF THE LOTS AND TRACTS HEREIN.
- ALL LOTS AND TRACTS HEREIN SHALL BE DEDICATED TO THE CITY OF CHEYENNE, WYOMING, AS A CONDITION OF THE DEDICATION OF THE LOTS AND TRACTS HEREIN.
- ALL LOTS AND TRACTS HEREIN SHALL BE DEDICATED TO THE CITY OF CHEYENNE, WYOMING, AS A CONDITION OF THE DEDICATION OF THE LOTS AND TRACTS HEREIN.

**FILING RECORD**

RECORDED IN BOOK 133 PAGE 107  
 CHEYENNE, WYOMING  
 NOVEMBER 2021