

DEDICATION

INWELL PERSONS BY THESE PRESENTS THAT: from A. Zook and Madeline A. Zook, husband and wife, owners in fee simple of the SE1/4 of Section 20 and a portion of the NE1/4 of Section 29, 1/4 mile north of P.O. Laramie County, Wyoming, more particularly described as follows:

Beginning at a point on the north line of said U.S. Highway 20, said point being on the east line of said NE1/4 of Section 20, thence N02°55'30"E, along said east line of said SE1/4 of Section 20, thence N00°29'41"E, along the east line of said SE1/4 of Section 20, a distance of 1318.39 feet to the northeast corner of said SE1/4 of Section 20, thence S89°29'50"W, a distance of 1320.74 feet to the northeast corner of said SE1/4 of Section 20, thence S00°00'00"W, a distance of 207.12 feet to the north line of said U.S. Highway 20, thence along the north line of said U.S. Highway 20, a distance of 207.12 feet to the point of beginning, containing 40.00 acres more or less.

The above to be surveyed, plotted and located as ROLLING MEADOWS and the same to be subdivided into lots and lots on it, in accordance with best interests and grants the easements for the purposes hereinbefore stated.

WITNESSED my hand and seal of office this 17th day of July, 2002.
Roland A. Zook
Madeline A. Zook

ACKNOWLEDGMENTS

STATE OF WYOMING) SS
COUNTY OF LARAMIE)

This dedication instrument was acknowledged before me this 17th day of July, 2002, by Roland A. Zook and Madeline A. Zook, the persons named in the instrument.

Carol A. Steel
Notary Public, Laramie County, Wyoming
My Commission Expires: 8/15/04

APPROVALS

Approved by the City of Laramie, Laramie County, Wyoming, on this 17th day of July, 2002.

John Jones
Development Director

Approved by the Board of County Commissioners of Laramie County, Wyoming, this 17th day of July, 2002.

John Jones
County Clerk

NOTES

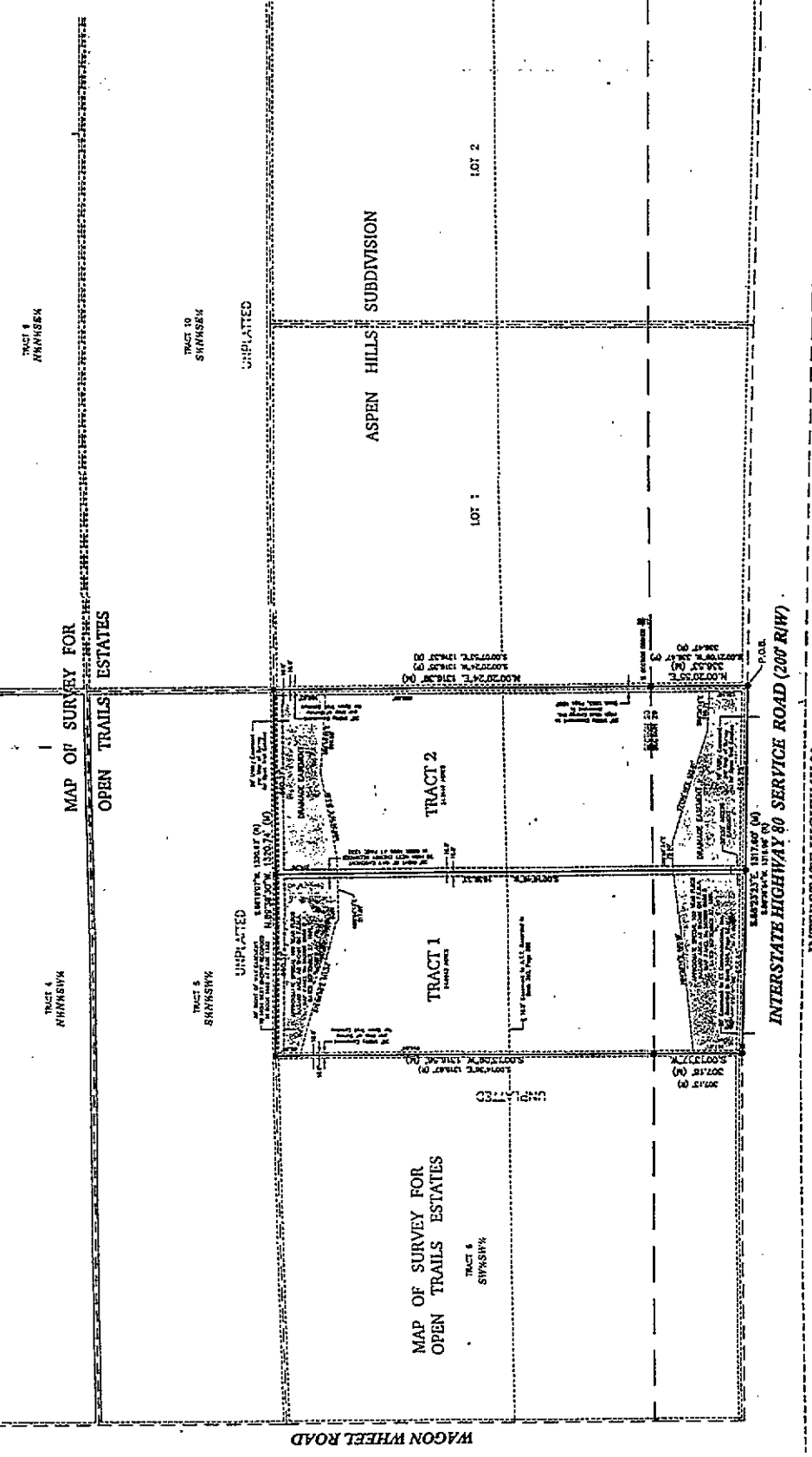
- 1) State of Wyoming - Ord 18888 established by OPS (Grand Parkway Wyoming) permits.
- 2) All permits to be obtained from Wyoming State Engineers Office, Cheyenne, Wyoming.
- 3) State permits to be obtained from the City - County Health Department, Cheyenne, Wyoming.

LEGEND

- 1/4" = 1' (100' SCALE) WITH 1/4" LARAMIE CAP STRIPS 3/8" X 3/8"
- ROAD 7' LARAMIE CAP STRIPS 3/8" X 3/8"
- ROAD 7' ASPHALT PAVEMENT 7' X 7'
- DITCHES 4' WIDE X 4' DEEP
- 100 YEAR FLOOD PLANE ORANGE ELEVATION

DEQ NOTES

- 1) Potential buyer/owner is advised to hire a separate and duly licensed contractor and conduct/complete the work with the Wyoming State Department of Environmental Quality (DEQ) at the Wyoming State Engineer's Office. A required permit to drill of a water well.



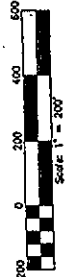
REQUIREMENTS

RECORD TO BE FILED IN THE PUBLIC RECORDS OF THE COUNTY OF LARAMIE, WYOMING.

FLING RECORD

Surveyed and Plotted by: *Roland A. Zook*
Map No. *12345*
Date of Survey: *July 17, 2002*
City of *Laramie*
W.C. No. *12345*
S.E. No. *12345*

VICINITY MAP



NO PROPOSED DOMESTIC WATER SOURCE
NO PROPOSED PUBLIC SEWAGE DISPOSAL SYSTEM
FIRE PROTECTION TO BE PROVIDED BY FIRE DISTRICT #6

ROLLING MEADOWS
SITUATED IN A PORTION OF SECTION 20 & 29,
T.14N., R.63W., OF THE 6TH P.M.,
LARAMIE COUNTY, WYOMING.

PREPARED JULY, 2002

STEEL SURVEYING SERVICES, LLC
PROFESSIONAL LAND SURVEYORS
152 EAST 19th STREET P.O. BOX 2973
CHEYENNE, WY. 82003