

DEDICATION

WE ALL PERSONS BY THESE PRESENTS THAT: Leona R. Ostrom, a person and Ronald Ostrom, a married person, owners in simple of the South 69.59 feet of the North 139.59 feet of et Condominium of Block 1, Lot 1, Block 1, et Subdivision, City of Cheyenne, Laramie County Wyoming, Relative Condominiums & Condominium in accordance with the Declaration recorded on March 26, 1981 in Book 1152 at Page 267 and Condominium Map recorded on March 26, 1981 in Plat Cabinet 4, Set 394 at the Laramie County, Wyoming records, has caused the same to be surveyed, located, replatted and known as ROSE SUBDIVISION, does hereby recede the subdivision of said land as it appears on the plat, to be their free act and deed and in accordance with their desires

Leona R. Ostrom
 Ronald Ostrom

ACKNOWLEDGEMENTS

STATE OF WYOMING } SS
 COUNTY OF LARAMIE }

The dedication instrument was acknowledged before me this 21st day of June, 1995, by Leona R. Ostrom and Ronald Ostrom.



APPROVALS

Approved by the Cheyenne-Laramie County Regional Planning Commission this 21st day of June, 1995.

[Signature]
 Development Director

Approved by the City Council of the City of Cheyenne, Wyoming, this 21st day of June, 1995.



ROSE SUBDIVISION

A REPLAT OF THE SOUTH 69.59 FEET OF THE NORTH 139.59 FEET OF RAINTREE CONDOMINIUMS, A REPLAT OF LOT 1, BLOCK 1, RAINTREE SUBDIVISIONS, CITY OF CHEYENNE, LARAMIE COUNTY, WYOMING.

PREPARED: JUNE 1995



STEEL SURVEYING SERVICES
 PROFESSIONAL LAND SURVEYORS
 1102 WEST 19th STREET P.O. BOX 2073
 CHEYENNE, WY. 82003



STORY'S ADDITION

MILLER LANE

SPENCER

(16' ALLEY R/W)

ADDITION

LOT 12

SPRING VALLEY ADDITION

NOTES

1) Based at Arimath City of Cheyenne Datum 1877, References from sections "CAPitol" and "GALLI".

LEGEND

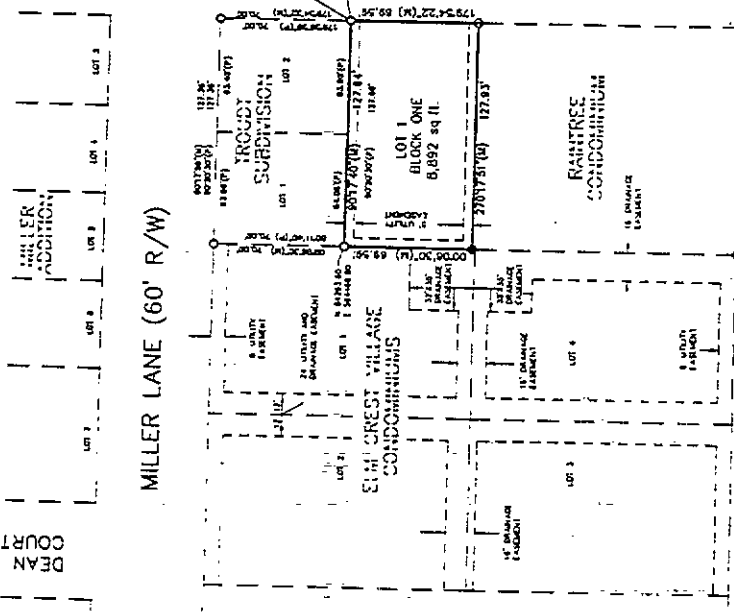
- SET 5/8" X 24" LONG REBAR WITH 2" ALUMINUM CAP STAMPED "SS 1 S 2500"
- FOUND 5/8" REBAR WITH 2" ALUMINUM CAP "S 5 5910"
- FOUND 1/2" IRON PIPE
- △ CITY CONTROL MONUMENT
- (P) DATA MEASURED THIS SURVEY
- (P) DATA PER RECORDED PLAT

CERTIFICATE OF SURVEYOR

I, John A. Steel, Registered Professional Land Surveyor in the State of Wyoming, do hereby certify that this plat of ROSE SUBDIVISION, was prepared from official plats and deeds of record and from notes of a field survey conducted by me or under my direct supervision during the month of May, 1995, that the monuments are set or found as shown and that this plat correctly represents said survey of the land depicted hereon to the best of my knowledge



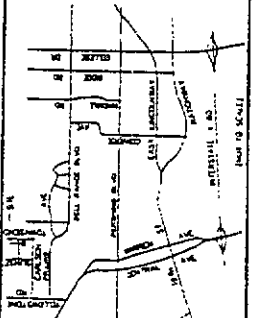
JOB # 95143 06-20-95



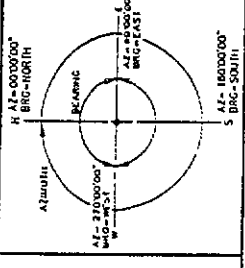
CARLSON STREET (60' R/W)

GRAPHIC SCALE
 (IN FEET)
 1 inch = 50 ft

VICINITY MAP



AZIMUTH



FILING RECORD

Reception 1/23/97
 The State of Wyoming
 County of Laramie
 This instrument was filed for record as 100000000 on the 21 day of June, 1995.
 My Comm. No. 100000000
 My Exp. Date 06-21-97
John A. Steel
 County Clerk & Recorder - Laramie County, Wyoming