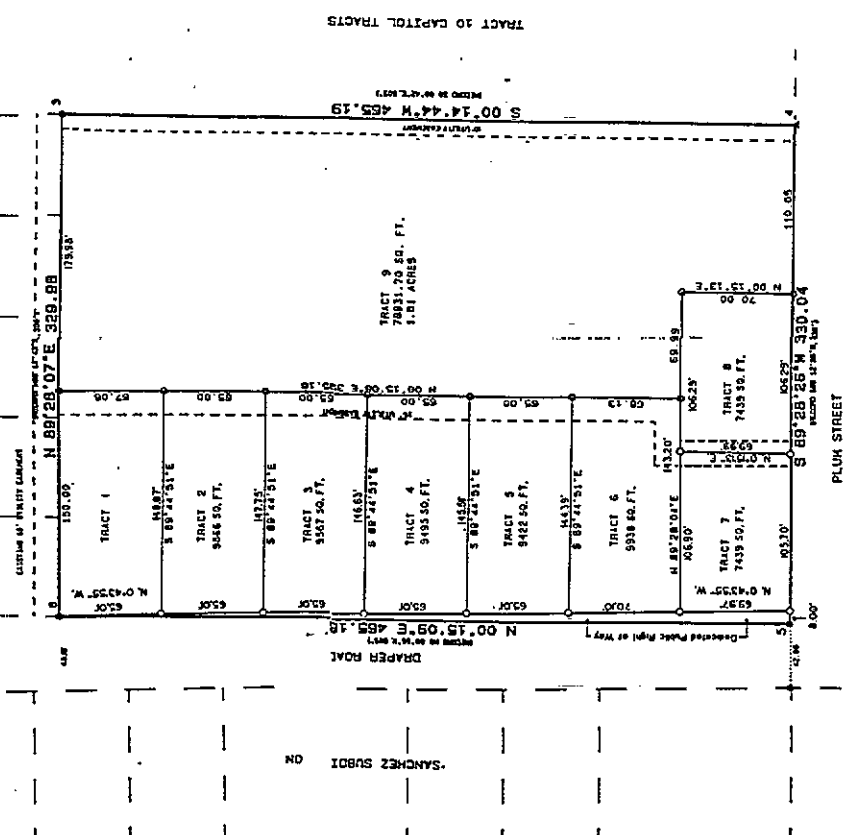




TRACT 11 CAPITOL TRACTS

LANPHAN COURT (50' R/W)

SAN RAE SUBDIVISION



TRACT 14 CAPITOL TRACTS

SURVEYORS CERTIFICATE

I, FRANCIS J. HANCOCK, a Registered Professional Land Surveyor and State Engineer, State of North Carolina, do hereby certify that the foregoing plat was prepared by me or under my direct supervision and that I am a duly Licensed Professional Land Surveyor and State Engineer in the State of North Carolina. I am a duly Licensed Professional Land Surveyor and State Engineer in the State of North Carolina. I am a duly Licensed Professional Land Surveyor and State Engineer in the State of North Carolina.

Francis J. Hancock
 FRANCIS J. HANCOCK
 STATE ENGINEER, NO. 118, 500 310

DEDICATION

FOR ALL THE TRACTS HEREIN SHOWN AND THE ROADS AND ALLEYS THEREON, THE DONOR HEREBY DEDICATES AND CONVEYS TO THE PUBLIC OF THE STATE OF NORTH CAROLINA, THE RIGHT OF WAY FOR THE ROADS AND ALLEYS SHOWN AS SHOWN.

Captha Hancock
 CAPTHA HANCOCK

ACKNOWLEDGEMENT

STATE OF NORTH CAROLINA
 COUNTY OF LENOIR
 I, the undersigned, the undersigned, do hereby certify that the foregoing plat was prepared by me or under my direct supervision and that I am a duly Licensed Professional Land Surveyor and State Engineer in the State of North Carolina.

Francis J. Hancock
 FRANCIS J. HANCOCK
 STATE ENGINEER, NO. 118, 500 310

LEGAL DESCRIPTION

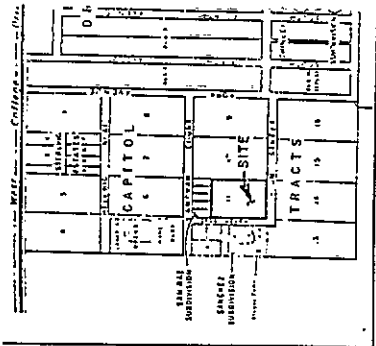
THE BOUNDARIES OF TRACT 11 OF CAPITOL TRACTS, SECTION 18, TOWNSHIP 13 N., RANGE 6 E., BEING THE

APPROVALS

APPROVED BY THE DISTRICT ENGINEER, COUNTY RESIDENT PLANNING COMMISSION
 DATE: 11/15/1984

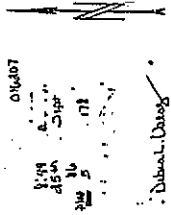
Francis J. Hancock
 FRANCIS J. HANCOCK
 STATE ENGINEER, NO. 118, 500 310

APPROVED BY THE COUNTY COMMISSIONER, COUNTY RESIDENT PLANNING COMMISSION
 DATE: 11/15/1984



NOTES:

- 1. THE BOUNDARIES OF TRACT 11 OF CAPITOL TRACTS, SECTION 18, TOWNSHIP 13 N., RANGE 6 E., BEING THE
- 2. THE BOUNDARIES OF TRACT 12 OF CAPITOL TRACTS, SECTION 18, TOWNSHIP 13 N., RANGE 6 E., BEING THE
- 3. THE BOUNDARIES OF TRACT 13 OF CAPITOL TRACTS, SECTION 18, TOWNSHIP 13 N., RANGE 6 E., BEING THE
- 4. THE BOUNDARIES OF TRACT 14 OF CAPITOL TRACTS, SECTION 18, TOWNSHIP 13 N., RANGE 6 E., BEING THE
- 5. THE BOUNDARIES OF TRACT 15 OF CAPITOL TRACTS, SECTION 18, TOWNSHIP 13 N., RANGE 6 E., BEING THE
- 6. THE BOUNDARIES OF TRACT 16 OF CAPITOL TRACTS, SECTION 18, TOWNSHIP 13 N., RANGE 6 E., BEING THE
- 7. THE BOUNDARIES OF TRACT 17 OF CAPITOL TRACTS, SECTION 18, TOWNSHIP 13 N., RANGE 6 E., BEING THE
- 8. THE BOUNDARIES OF TRACT 18 OF CAPITOL TRACTS, SECTION 18, TOWNSHIP 13 N., RANGE 6 E., BEING THE
- 9. THE BOUNDARIES OF TRACT 19 OF CAPITOL TRACTS, SECTION 18, TOWNSHIP 13 N., RANGE 6 E., BEING THE
- 10. THE BOUNDARIES OF TRACT 20 OF CAPITOL TRACTS, SECTION 18, TOWNSHIP 13 N., RANGE 6 E., BEING THE



ABBREVIATED PLAT
 SAN RAE SUBDIVISION
 SECOND FILING
 BEING THE

50. 455' OF TRACT 11 CAPITOL TRACTS
 LOCATED IN THE E1/2NW1/4, SECTION 18
 T.13N., R.6E., 6th P.M.
 LENOIR COUNTY, N.C.
 PREPARED BY
 RGS TECHNICAL SERVICES