

D E D I C A T I O N

Know all men by these presents that Santos and Rachel Gonzales, husband and wife, owners in fee simple of the lands embraced in this Plat of San Rae Subdivision as shown hereon, does hereby declare that this Plat to be their free act and deed and in accordance with their desires and do hereby grant the easement for the purposes as shown hereon.

Santos Gonzales
Santos Gonzales

Rachel Gonzales
Rachel Gonzales

A C K N O W L E D G E M E N T S

STATE OF WYOMING ss
COUNTY OF LARAMIE

The foregoing instrument was acknowledged before me by Santos Gonzales and Rachel Gonzales this 27 day of FEBRUARY 1980.

Witness my hand and official seal.

Mary Ellen Stadichson
Notary Public

My Commission expires April 2, 1981

A P P R O V A L S

Approved by the Cheyenne-Laramie County Regional Planning Commission this 7 day of APRIL 1980

Attest: Judy Kallal
Secretary

Keith Erickson
Chairman

Approved by the Board of County Commissioners of Laramie County, Wyoming this 6 day of MAY 1980

Attest: Alana K. Parrish
County Clerk

Oliver R. ...
Chairman of the Board

Approved by the City Council of the City of Cheyenne, Wyoming this 28th day of APRIL 1980

Attest: Diana A. De Aguiar
City Clerk

How Erickson
Mayor

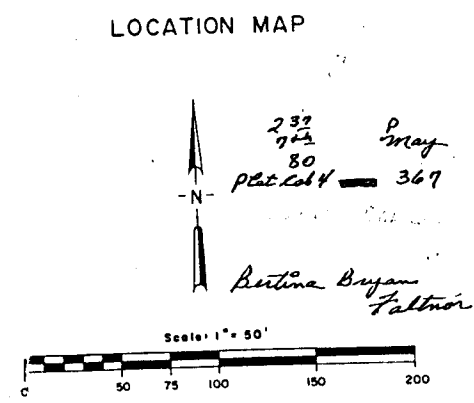
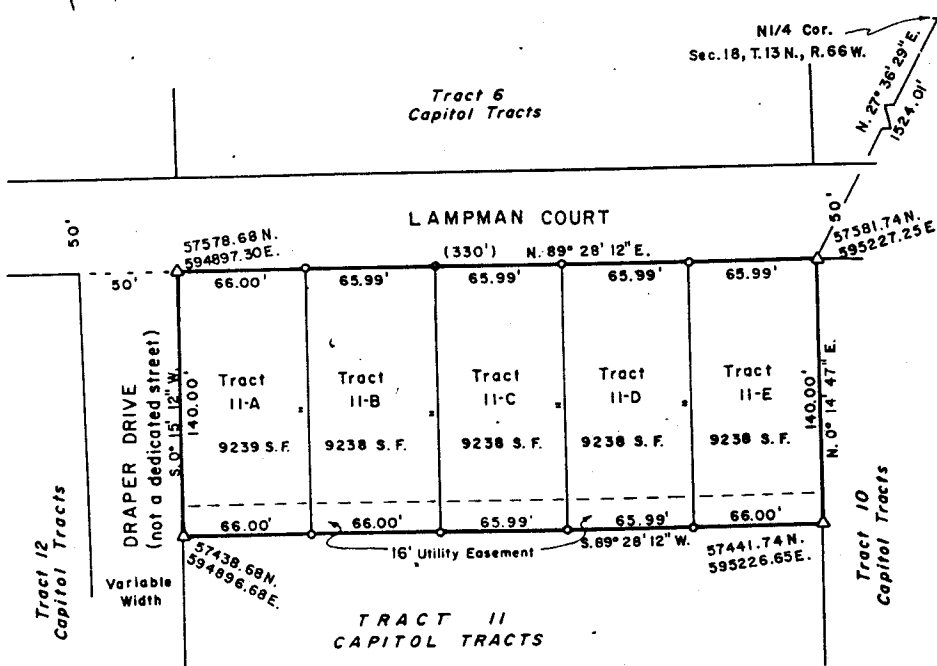
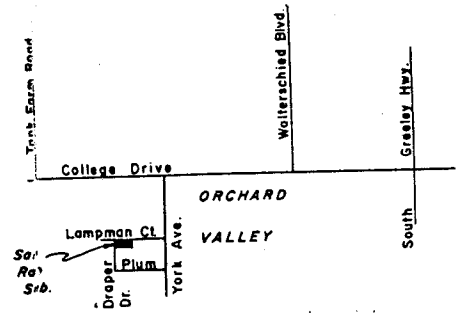
D E S C R I P T I O N

The North 140 feet of Tract 11 of Capitol Tracts being a Subdivision located in the E 1/2 of the NW 1/4 of Section 18, T. 13 N., R. 66 W. of the 6th P.M., Laramie County, Wyoming, containing 1.06 acres, more or less.

C E R T I F I C A T E O F S U R V E Y O R

I, Edward C. Fry, a registered Professional Engineer and Land Surveyor, hereby certify that this Plat of the San Rae Subdivision was made from notes taken during an actual survey made under my direct supervision in November, 1979 and February 1980 and data of record on file in the Office of the County Clerk and Ex-Officio Register of Deeds, Laramie County, Wyoming. I further certify that the Plat indicates the results of that survey and my findings in reference to the said data of record.

Edward C. Fry
Edward C. Fry, P.E., L.S., Wyo. Reg. # 662



L E G E N D & N O T E S

**FINAL PLAT
SAN RAE SUBDIVISION**
being the
North 140' of Tract 11 of Capitol Tracts
Located in the E 1/2 NW 1/4, Section 18
T. 13 N. R. 66 W. 6th P.M.