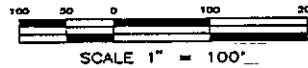


NOTES

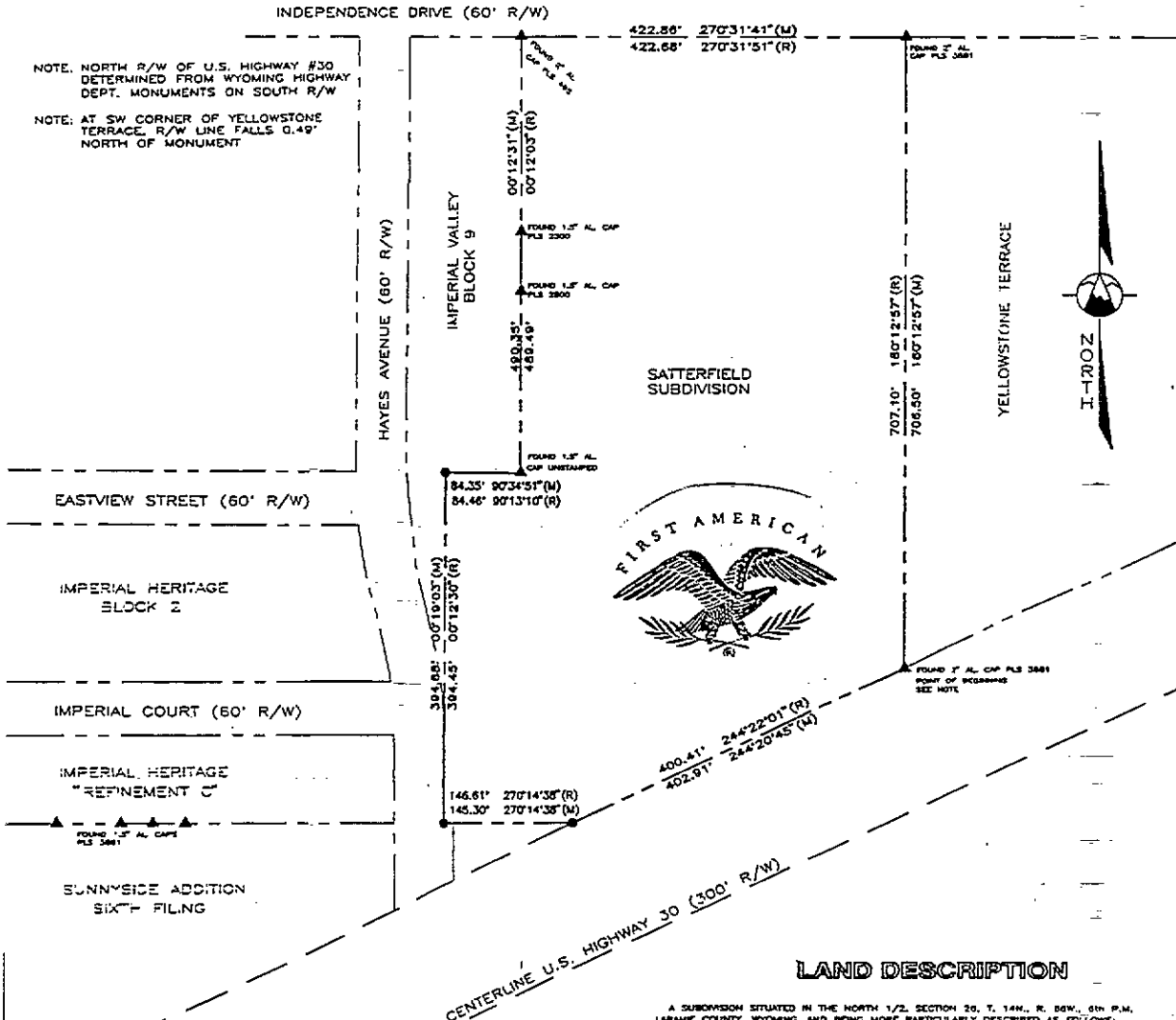
- ▲ FND COR (As Noted)
- SET 5/8" X 24" REBAR WITH 2" AL. CAP PLS 3881
- (R) RECORD DIMENSION FROM SATTERFIELD SUBDIVISION
- (M) MEASURED DIMENSION

RAINBOW GARDENS
"REFINEMENT A"



NOTE: NORTH R/W OF U.S. HIGHWAY #30 DETERMINED FROM WYOMING HIGHWAY DEPT. MONUMENTS ON SOUTH R/W

NOTE: AT SW CORNER OF YELLOWSTONE TERRACE, R/W LINE FALLS 0.49' NORTH OF MONUMENT



LAND DESCRIPTION

A SUBDIVISION SITUATED IN THE NORTH 1/2 SECTION 26, T. 14 N., R. 66 W., 6th P.M., LARAMIE COUNTY, WYOMING, AND BEING MORE PARTICULARLY DESCRIBED AS FOLLOWS:
 BEGINNING AT THE SOUTH WEST CORNER OF YELLOWSTONE TERRACE;
 THENCE ON AN AZIMUTH OF 244°20'45" A DISTANCE OF 402.91' ON AND ALONG THE NORTHERLY RIGHT-OF-WAY OF U.S. HIGHWAY #30 TO A 2" AL. CAP STAMPED PLS 3681;
 THENCE ON AN AZIMUTH OF 270°14'38" A DISTANCE OF 145.30' TO A 2" AL. CAP STAMPED PLS 3881;
 THENCE ON AN AZIMUTH OF 00°12'03" A DISTANCE OF 394.88' TO A 2" AL. CAP STAMPED PLS 3881;
 THENCE ON AN AZIMUTH OF 90°34'51" A DISTANCE OF 84.35' ALONG THE SOUTHERLY BOUNDARY OF IMPERIAL VALLEY BLOCK NINE TO A 1.5" AL. CAP;
 THENCE ON AN AZIMUTH OF 00°12'03" A DISTANCE OF 490.35' ALONG THE EASTERLY BOUNDARY OF IMPERIAL VALLEY BLOCK NINE TO A 2" AL. CAP STAMPED PLS 408;
 THENCE ON AN AZIMUTH OF 270°31'41" A DISTANCE OF 422.88' ALONG THE SOUTHERLY RIGHT-OF-WAY OF INDEPENDENCE DRIVE TO 2" AL. CAP STAMPED PLS 3881;
 THENCE ON AN AZIMUTH OF 180°12'03" A DISTANCE OF 706.50' ALONG THE WESTERLY BOUNDARY OF YELLOWSTONE TERRACE TO THE POINT OF BEGINNING.
 SAID PARCEL CONTAINING 8.81 ACRES MORE OR LESS AND SUBJECT TO ALL EASEMENTS OF RECORD, BEING LOT 1, BLOCK 1 SATTERFIELD ADDITION, BASIS OF AZIMUTH THE WESTERLY LINE OF YELLOWSTONE TERRACE WHICH BEARS AN AZIMUTH OF 180°12'03" AND A DISTANCE OF 706.50'.

Reception 198369
 The State of Wyoming } SS
 County of Laramie }
 This instrument was filed for record
 on 25 of clock 9 M. on the
25 day of February
 A.D. 19 97 and duly recorded in
 book 14144 on page 976
 P.C. 7 1997
Becky J. Brauman
 County Clerk & Ex-Officio Register of Deeds

SURVEYOR'S STATEMENT

I, BECKY J. BRAUMAN, A PROFESSIONAL LAND SURVEYOR IN THE STATE OF WYOMING, DO HEREBY STATE THAT THIS RECORD OF SURVEY OF THE LAND AS DESCRIBED HEREON WAS PREPARED FROM THE FIELD NOTES OF ACTUAL FIELD SURVEYS MADE UNDER MY DIRECTION DURING DECEMBER 1996 AND FEBRUARY 1997.

I FURTHER STATE THAT IN MY PROFESSIONAL OPINION IT CORRECTLY AND ACCURATELY REPRESENTS THE MONUMENTS AND PROPERTY LINES AS SET OR FOUND AT THE TIME OF SAID SURVEY.

Becky J. Brauman
 BECKY J. BRAUMAN, WYOMING PLS 3881
 February 25 1997

RECORD OF SURVEY

SATTERFIELD SUBDIVISION
 SITUATED IN
 A PORTION OF THE NORTH 1/2 OF
 SECTION 26, T.14 N., R.66 W., OF
 THE 6th P.M., LARAMIE COUNTY
 WYOMING

INTERMOUNTAIN PROFESSIONAL SERVICES, INC.
 5801 OSAGE AVENUE CHEYENNE WYOMING 82009
 PH. (307) 632-3138 FAX: (307) 632-3194
 JOB NO. 2973 DATE: 2/11/97 DWN. BY: JAG

PREPARED FOR: SATTERFIELD