

VICINITY MAP

DEDICATION

FOR ALL NEAR BY THESE PRESENTS THAT Victor R. Schmidt, Owner of the Subdivision, has dedicated to the City of Cheyenne, Wyoming, the following described property, to-wit: 4.97 Acres, more or less, of the Subdivision, as shown on the plat hereof, and the same shall be subject to the same conditions and restrictions as are herein set forth, and the same shall be subject to the same conditions and restrictions as are herein set forth.

WITNESSED my hand and seal this 23rd day of March, 1964.

Victor R. Schmidt
 State of Wyoming

ACKNOWLEDGEMENT
 STATE OF WYOMING

The foregoing instrument was acknowledged before me on this 23rd day of March, 1964, by Victor R. Schmidt.

My Commission Expires
 March 31, 1966

APPROVALS
 By the Board of Commissioners of Laramie County

Approved by the Board of Commissioners of Laramie County, Wyoming
 on this 23rd day of March, 1964.

Approved by the City Council of the City of Cheyenne, Wyoming
 on this 23rd day of March, 1964.

Approved by the City Council of the City of Cheyenne, Wyoming
 on this 23rd day of March, 1964.

Approved by the City Council of the City of Cheyenne, Wyoming
 on this 23rd day of March, 1964.

Approved by the City Council of the City of Cheyenne, Wyoming
 on this 23rd day of March, 1964.

Approved by the City Council of the City of Cheyenne, Wyoming
 on this 23rd day of March, 1964.

FINAL PLAT

SCHMIDT SUBDIVISION NO. 2
 FOR A
 4.97 ACRE TRACT OF LAND
 IN THE

SV 1/4 SECTION 2, T. 13 N., R. 66 W., of the 6th P.M.
 LARAMIE COUNTY, WYOMING

SCALE 1" = 80'

BOUNDARY DESCRIPTION

A tract of land called SCHMIDT SUBDIVISION NO. 2, in the SW 1/4 Section 2, Township 13 North, Range 66 West of the 6th Principal Meridian, Laramie County, Wyoming, is hereby described as follows:

The tract of land is bounded on the north by the south line of the 100th Street, on the east by the east line of the 110th Street, on the south by the south line of the 120th Street, and on the west by the west line of the 100th Street. The area of the tract is 4.97 acres, more or less.

TRACT north 78 degrees 51 minutes 15 seconds east for a distance of 78.10 feet to a marked aluminum cap set on a 3/8 inch x 1/2 inch rebar.

TRACT south 89 degrees 35 minutes 00 seconds west along the north line of the 100th Street for a distance of 112.17 feet to a marked aluminum cap set on a 3/8 inch x 1/2 inch rebar.

TRACT west 89 degrees 37 minutes 41 seconds east for a distance of 112.17 feet to a marked aluminum cap set on a 3/8 inch x 1/2 inch rebar.

TRACT south 78 degrees 15 minutes 15 seconds west for a distance of 78.10 feet to a marked aluminum cap set on a 3/8 inch x 1/2 inch rebar.

TRACT north 89 degrees 35 minutes 00 seconds east for a distance of 112.17 feet to a marked aluminum cap set on a 3/8 inch x 1/2 inch rebar.

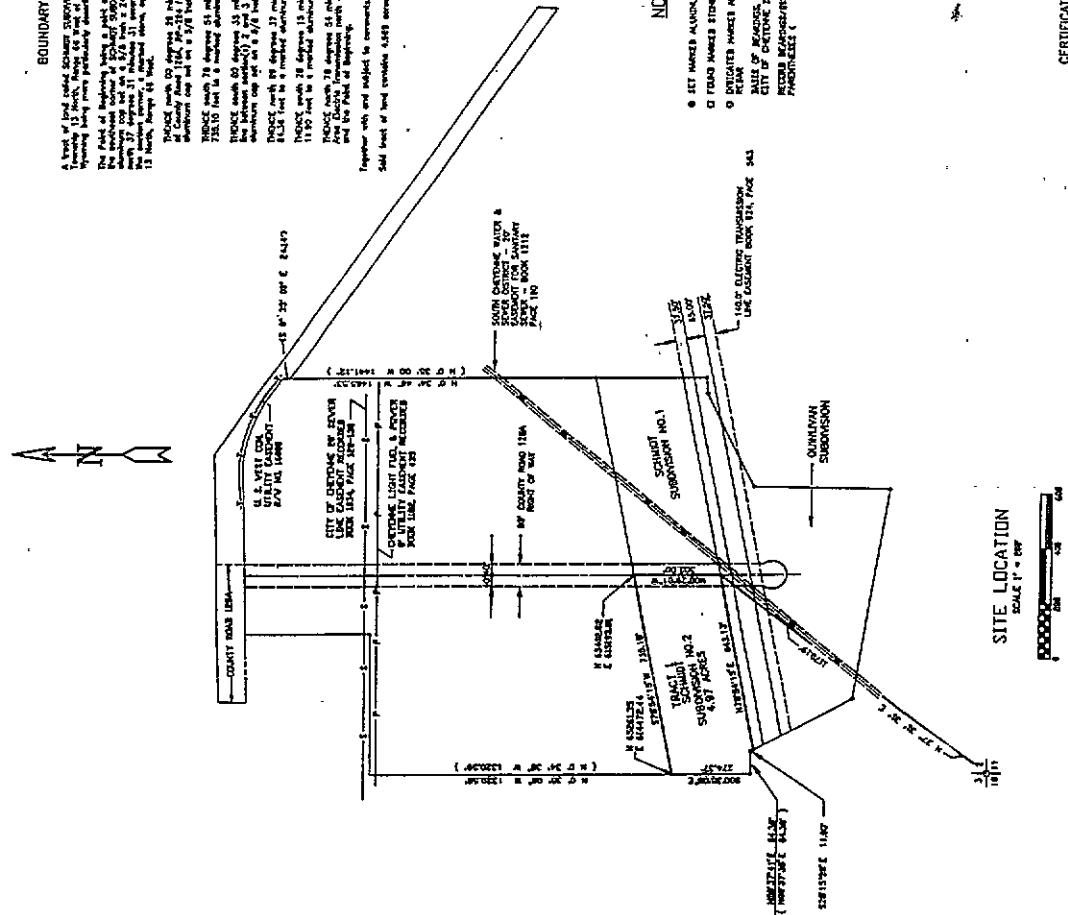
TRACT east 89 degrees 37 minutes 41 seconds west for a distance of 112.17 feet to a marked aluminum cap set on a 3/8 inch x 1/2 inch rebar.

Together with and subject to comments, amendments and restrictions of record.

Said tract of land contains 4.97 acres more or less.

NOTES

- SET MARKER ALONG CAP ON SW 1/4 2 1/2 FEET
- FOUND MARKER STAKE USED THIS SURVEY
- DISTANCE MARKER ALONG CAP ON SW 1/4 2 1/2 FEET
- BASES OF BEARINGS, DISTANCES AND COORDINATES
- BEARING MEASUREMENTS ARE ENCLOSED IN PARENTHESES ()



FIRE PROTECTION PROVIDED BY FIRE DISTRICT NO. 1
 NO DOMESTIC WATER SYSTEM



CERTIFICATE OF SURVEY

I, William R. Schmidt, a Registered Professional Engineer and Land Surveyor, do hereby certify that this plat was prepared from a true and correct survey of the land hereon shown, and that the same is in accordance with the laws of the State of Wyoming, and that the same is in accordance with the requirements of the laws of the State of Wyoming.

William R. Schmidt
 Registered Professional Engineer and Land Surveyor
 No. 1000
 State of Wyoming
 3/23/64

RECORD COPY
 LARAMIE COUNTY RECORDS
 BOOK 314, PAGE 543
 3/23/64
 J. R. [Signature]