

NOTES

- SET MARKS ALIGNED CAP ON 5/17 X 1/4 IRON
- EXISTING MARKS ALIGNED CAP ON 5/17 X 1/4 IRON
- FOUND MARKS STAKE USED THIS SURVEY
- PART OF ADJACENT LOTS AND COORDINATES
- THESE BEARING/DISTANCES ARE INCLUDED IN
- PLANNING SHEET 1
- POINTS:
 - 1. A POINT THAT FALLS IN THE 10' 0" E.P. OF
 - 2. A POINT THAT FALLS IN THE 10' 0" E.P. OF A
 - 3. A POINT THAT FALLS IN THE 10' 0" E.P. OF A
 - 4. A POINT THAT FALLS IN THE 10' 0" E.P. OF A



BOUNDARY DESCRIPTION

A tract of land called SCHMIDT SUBDIVISION NO. 4, in the 23rd and 24th Townships, Larabee County, Wyoming, more particularly described as follows:

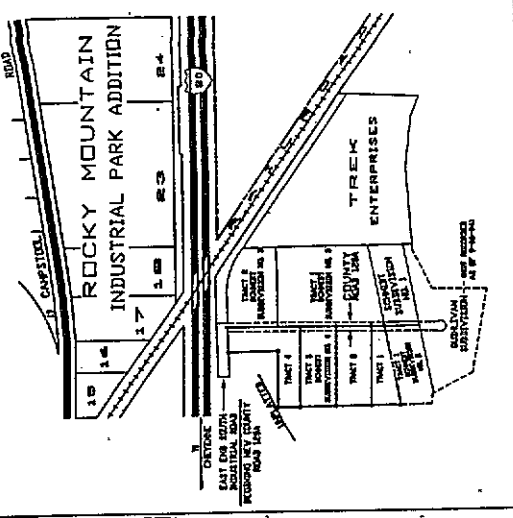
The tract of land being a part of the center line of County Road 1284 and the southeast corner of SCHMIDT SUBDIVISION NO. 4, as shown on the plat of said subdivision, and is bounded as follows:

THREE (3) ACRES, more or less, bounded as follows: on the north by the center line of County Road 1284 for a distance of 1284 feet to a point that is adjacent to the corner post of a certain lot in the 23rd and 24th Townships, Larabee County, Wyoming; on the east by the center line of County Road 1284 for a distance of 1284 feet to a point that is adjacent to the corner post of a certain lot in the 23rd and 24th Townships, Larabee County, Wyoming; on the south by the center line of County Road 1284 for a distance of 1284 feet to a point that is adjacent to the corner post of a certain lot in the 23rd and 24th Townships, Larabee County, Wyoming; on the west by the center line of County Road 1284 for a distance of 1284 feet to a point that is adjacent to the corner post of a certain lot in the 23rd and 24th Townships, Larabee County, Wyoming.

CERTIFICATE OF SURVEY

I, William S. Williams, a Registered Professional Engineer and Land Surveyor, hereby certify that the above and foregoing plat and description of the tract of land described herein were prepared by me or under my direct supervision and that the same are true and correct according to the best of my knowledge and belief.

WILLIAM S. WILLIAMS
 REGISTERED PROFESSIONAL ENGINEER AND LAND SURVEYOR
 No. 1111
 State of Wyoming



VICINITY MAP

DEDICATION

KNOW ALL MEN BY THESE PRESENTS THAT VALTIR A. SCHMIDT, AS A V. R. SCHMIDT, Owner of the land herein described and situated on the plat of a portion of the same known as SCHMIDT SUBDIVISION NO. 4, do hereby dedicate to the public the certain portion of said land as hereinafter described for the purposes herein set forth.

WALTIR A. SCHMIDT
 AS A V. R. SCHMIDT

ACKNOWLEDGEMENT

STATE OF WYOMING
 COUNTY OF SUBDIVISION

The foregoing instrument was acknowledged before me this 1st day of July, 1954, by Valtir A. Schmidt.

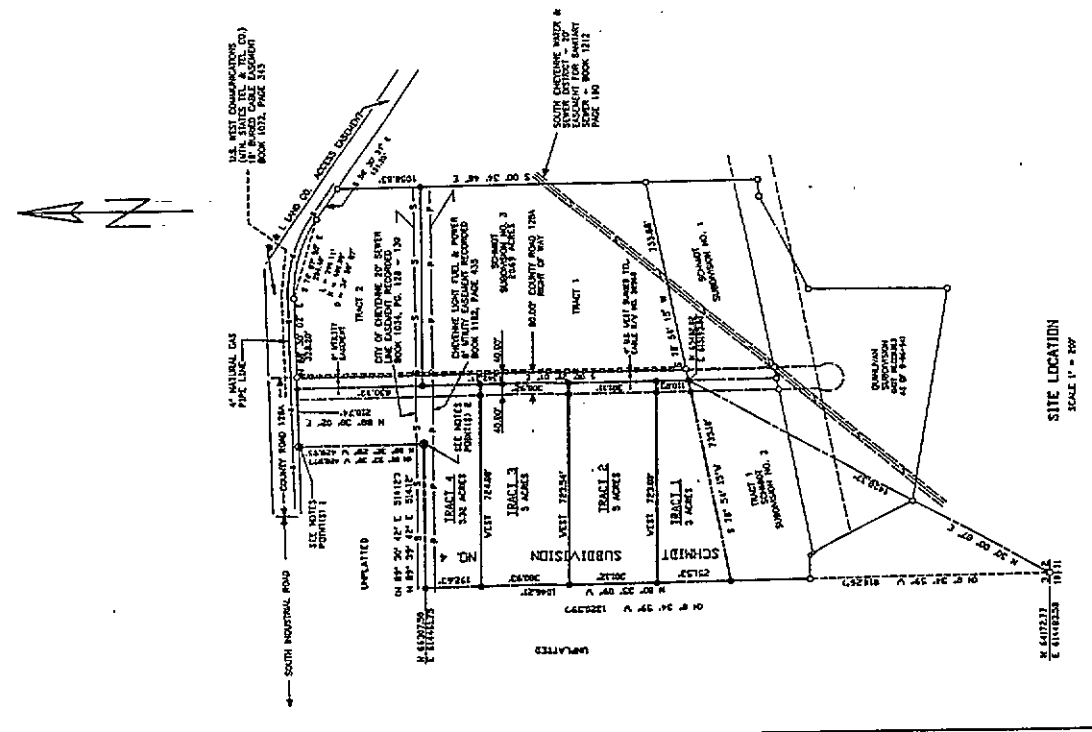
WALTER S. SCHMIDT
 Notary Public
 My Comm. Expires October 27, 1954

APPROVALS

Approved by the Larabee County Regional Planning Commission
 Approved by the Board of County Commissioners of Larabee County, Wyoming
 Approved by the City Council of the City of Cheyenne, Wyoming

FINAL PLAT

FOR
 SCHMIDT SUBDIVISION NO. 4
 IN THE TRACT OF LAND
 SW 1/4 SECTION 2, T. 13 N., R. 66 W., of the 6th P. M.
 LARABEE COUNTY, WYOMING



SITE LOCATION
 SCALE 1" = 200'

ENGINEERING RECORD

The following is a true and correct copy of the original plat and description of the tract of land described herein, as the same appears on the original plat and description filed for record in the office of the County Clerk of Larabee County, Wyoming, on this 1st day of July, 1954.

WILLIAM S. WILLIAMS
 REGISTERED PROFESSIONAL ENGINEER AND LAND SURVEYOR
 No. 1111
 State of Wyoming